



File **2016-00006134**

SLSI 9-94
BHCO 03-09

Land Survey Monuments situated in Section 5 , Township 87 N ,
Range 13 W , of the Fifth Principal Meridian, BLACK HAWK County, Iowa.
Previously recorded in Misc. Book N/A , Page N/A , in County Recorder's Office.
(Show reason for preparing this certificate): There is No Certificate for the corner on file with County Recorder, per
Ia. Code 355.11(1)(a).

(Evidence and detailed procedures used in establishing the corner position(s) and monumentation found or placed.)

Monument Description and Remarks: N.E. CORNER

NO CURRENT CERT. OF RECORD. CORNER REFERENCE PART OF SECTION LINE AND SURVEY FOR ANSBOROUGH AVENUE BRIDGE REPLACEMENT PROJECT (L-1302--73-07). RESEARCH OF AREA PLATS NOTES CORNER REF. PER MISC. BK. 248 pp.522-528. FOUND #4 REBAR w/ Y.P.C. PLS #7034 (SPLIT) AT $\pm 1-3/4"$ DP. TOP OF REBAR TAPPED DOWN w/ CONTACT TO SOLID OBJECT (ASSUME WPA CONC. MON.). CORNER ALIGNED \pm w/ C.L. ROAD TO WEST. BHco TIES PER RED DOT BOOK #1000 STATE CORNER RETIED ON 01/29/1980 BY WAYNE CLAASSEN SURVEYING AS A SET $1/2"$ REBAR OVER STD. WPA C.M., WITH NO REMAINING TIES FOUND. CORNER IS A COMMON CLOSING CORNER PER WPA FIELD NOTES DATED 10/16/1940. FND. CORNER, TIED, AND FILED FOR PUBLIC RECORD.

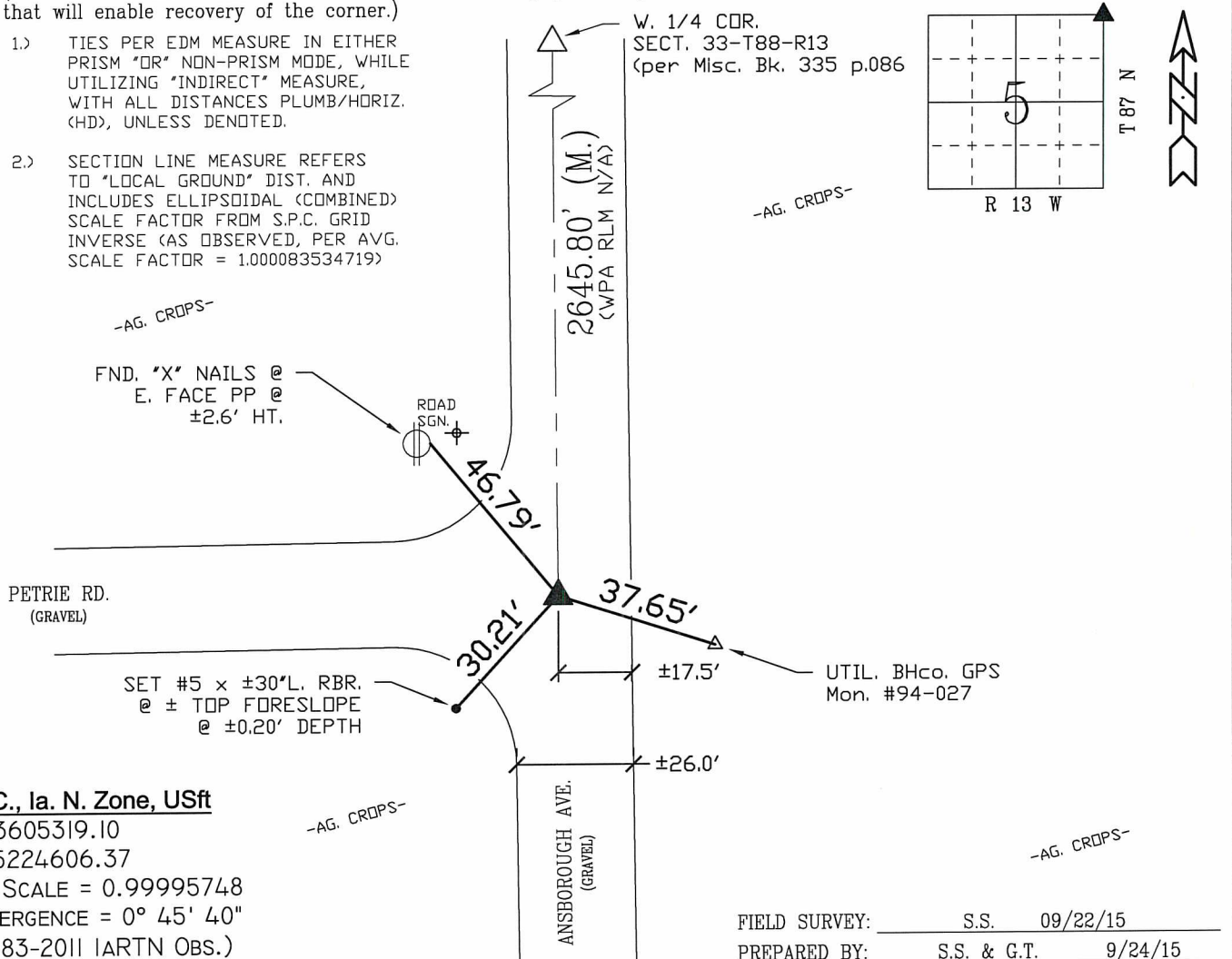
BHco Hist. Ties: BK. #1000 p.5 87-13

"NOT TO SCALE"

FIELD BOOK: Ties per Topcon 7003i #Z0115

(Show a minimum of three reference ties to durable physical objects, relevant monuments and physical conditions that will enable recovery of the corner.)

- 1.) TIES PER EDM MEASURE IN EITHER PRISM "OR" NON-PRISM MODE, WHILE UTILIZING "INDIRECT" MEASURE, WITH ALL DISTANCES PLUMB/HORIZ. (HD), UNLESS DENOTED.
- 2.) SECTION LINE MEASURE REFERS TO "LOCAL GROUND" DIST. AND INCLUDES ELLIPSOIDAL (COMBINED) SCALE FACTOR FROM S.P.C. GRID INVERSE (AS OBSERVED, PER AVG. SCALE FACTOR = 1.000083534719)



S.P.C., Ia. N. Zone, USft

$$N = 3605319.10$$
$$E = 5224606.37$$

GRID SCALE = 0.99995748

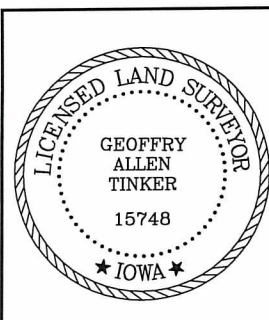
CONVERGENCE = $0^{\circ} 45' 40''$

(NAD83-2011 IARTN OBS.)

FIELD SURVEY: S.S. 09/22/15

PREPARED BY: S.S. & G.T. 9/24/15

LIST CORNERS TO BE INDEXED



I hereby certify that this land surveying document was prepared and the related survey work was performed by me or under my direct personal supervision and that I am a duly licensed Land Surveyor under the laws of the State of Iowa.

Geoffrey Allen Tinker 09/29/15
Geoffrey Allen Tinker (date)

License Number 15748

My license renewal date is December 31, 2016

Pages or sheets covered by this seal:

This Land Corner Certificate Only.

<u>Corner</u>	<u>Section</u> -	<u>Township</u> -	<u>Range</u>
N.E. Cor.	5	87 N	13 W
N.W. Cor.	4	87 N	13 W
S.E. Cor.	32	88 N	13 W
S.W. Cor.	33	88 N	13 W

INDEX OF ABBREVIATIONS

INDEX OF ABBREVIATIONS

(M) = "Measured" Dimension	"NP" = Reflectorless EDM Meas.
(P) = "Platted" Dimension	"MLM" = Indirect Measure
(R) = "Record" Dimension	"CM" = Concrete Monument
(C) = "Calculated" Dimension	"SM" = Survey Marker Spike/Tag
"IGS" = Iowa Geodetic Survey	"PK" = PK/MAG Nail Brand Style
"WPA" = Works Progress Admin. Survey	
"φ" = per George Miller Survey (BHco Surveyor 1858-1860)	
"δ" = per John Ball Survey (BHco Surveyor 1866-1891)	
"N" = per Nathan Barber Survey (BHco Surveyor 1908-1931)	