

MSC
INDEX
MARGIN
PROOF
COMPARE

BLACK HAWK COUNTY IOWA:SS 22258
FILED FOR RECORD MAY 1, 1998 AT
4:00 P.M. AND RECORDED IN BOOK 329
OF MISC PAGE 946
RECORDER
FEE 1-5.00/
MICHELS ENGINEERING CO
410 BRENTWOOD AVE
WATERLOO, IA 50701

Harold F. Michels 410 Brentwood Ave., Waterloo, Iowa 50701 319-235-7770

UNITED STATES PUBLIC LAND SURVEY CORNER CERTIFICATE

Land Survey Monuments situated in Section 4, Township 87 North, Range 13 West, of the Fifth Principal Meridian, BLACK HAWK County, Iowa.
Previously recorded in N/A in County Recorder's Office.
(book, page, document number, etc.)

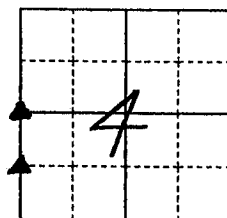
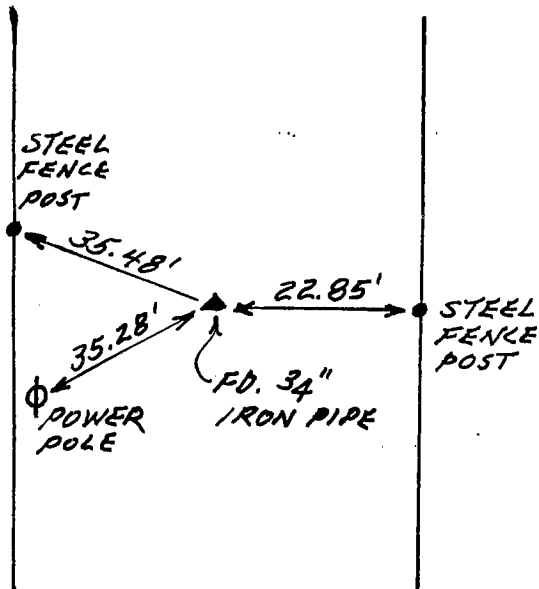
(Show reason for preparing this certificate, the evidence and detailed procedures used in establishing the corner positions and monumentation found or placed.)

Monument Description and Remarks FD. EXISTING MONUMENTS AS PER
COUNTY ENGINEER'S RECORDS. SET NEW & CONFIRMED
OLD TIES.

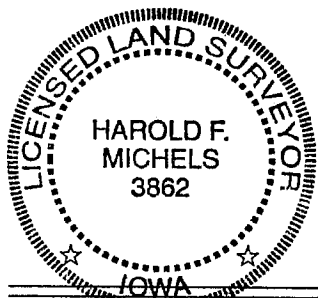
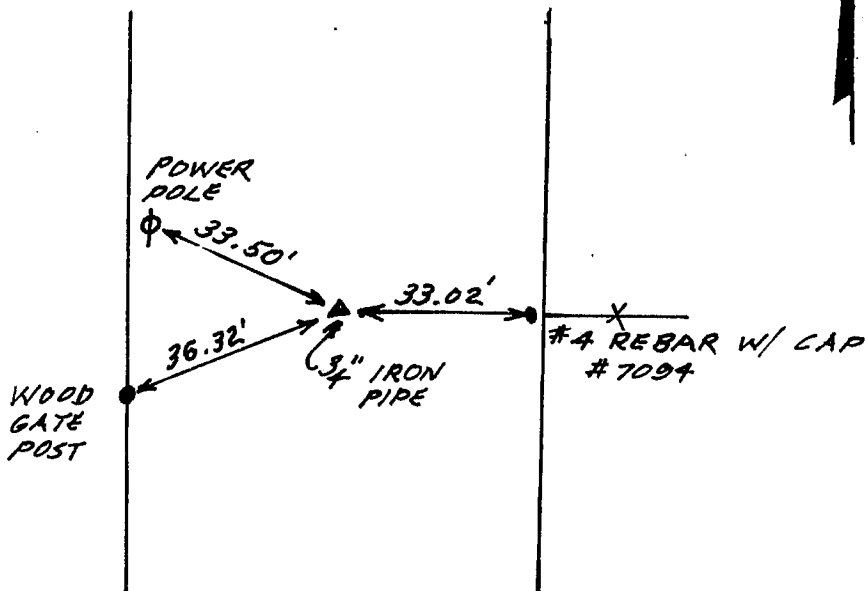
PLAN - VIEW

(Show a minimum of three reference ties to durable physical objects, relevant monuments and physical conditions that will enable recovery of the corner.)

W¹/₄ COR.



SW COR. NW¹/₄ SW¹/₄



I hereby certify that the survey work was completed and this certificate was prepared by me or under my direct personal supervision and that I am a duly registered land surveyor under the laws of the state of Iowa.

Signature: Harold F. Michels

Date: 4-5-98 Harold F. Michels Reg. No. 3862

My registration renewal date is Dec. 31, 99.

SEAL

List Corners to be Indexed

Corners	Section	Twp	Range
W ¹ / ₄	4	87	13
SW COR. NW ¹ / ₄ SW ¹ / ₄	4	87	13

BOOK 329 PAGE 946