

U.S. (IA.) PUBLIC LAND SURVEY  
CORNER CERTIFICATE (Ia. 355.11)

B.H. Co. PROJECT: FM-C007(139)--55-07

KIMBALL AVE. (V27) RESURFACING PROJECT (2016)

COLD-IN-PLACE RECYCLING w/ H.M.A. RESURFACING

INDEX OF ABBREVIATIONS

(M) = "Measured" Dimension  
(P) = "Platted" Dimension  
(R) = "Record" Dimension  
(C) = "Calculated" Dimension  
"IGS" = Iowa Geodetic Survey  
"WPA" = Works Progress Admin. Surveys (late 1930's to early 1940's)  
"G" = per George Miller Survey (BHco Surveyor 1858-1860)  
"B" = per John Ball Survey (BHco Surveyor 1866-1891)  
"N" = per Nathan Barber Survey (BHco Surveyor 1908-1931)  
"NP" = Reflectorless EDM Meas  
"MLM" = Indirect Measure  
"CM" = Concrete Monument  
"SM" = Survey Marker Spike/Tag  
"PK" = PK/MAG Nail Brand Style



Doc ID: 007222950001 Type: GEN  
Recorded: 12/02/2016 at 03:38:25 PM  
Fee Amt: \$0.00 Page 1 of 1  
Black Hawk County Iowa  
SANDIE L. SMITH RECORDER

File 2017-00010395

Land Survey Monument(s) situated in Section 04, Township 87 N., Range 13 W., of the Fifth Principal Meridian (5th P.M.), BLACK HAWK County, Iowa.

Previously recorded in MISC. Book 323, Page 569, in County Recorder's Office.

(Show reason for preparing this certificate): The corner monument has been Replaced or Modified, per Ia. Code 355.11(1)(c)

(Evidence and detailed procedures used in establishing the corner position(s) and monumentation found or placed.)

Monument Description and Remarks: E. 1/4 COR.

CORNER RESET & TIES UPDATED PER COLD-IN-PLACE RECYCLING & H.M.A. RESURF. PROJECT FM-C007(139)--55-07. PRIOR TO RESURF. PROJECT, FOUND 3/4" RBR. PER CURRENT COR. CERT. & TEMP. REF. COR. LOC. PER RTK GPS. AFTER 3" DP. MILL (RECYCLE), NO SOUNDING REMAINED @ ±RTK REFERENCE LOCATION w/ NO FURTHER EXCAVATION. PVMT. RESURFACED w/ +3" (1.5" INT. & 1.5" SURF.) H.M.A. PAVING. AFTER H.M.A. RESURFACE, RESET CORNER WITH 6"L. MAG SPIKE w/ MTL. WASHER (PLS #15748) @ ±0.10' WEST OF C.L. H.M.A. JOINT AND ALIGNED WITH EXISTING FENCELINE BOTH WEST & EAST OF CORNER.

Software: TopSurv v.8.2.3 w/FC-2500

Project Point ID: 1007

PLAN VIEW

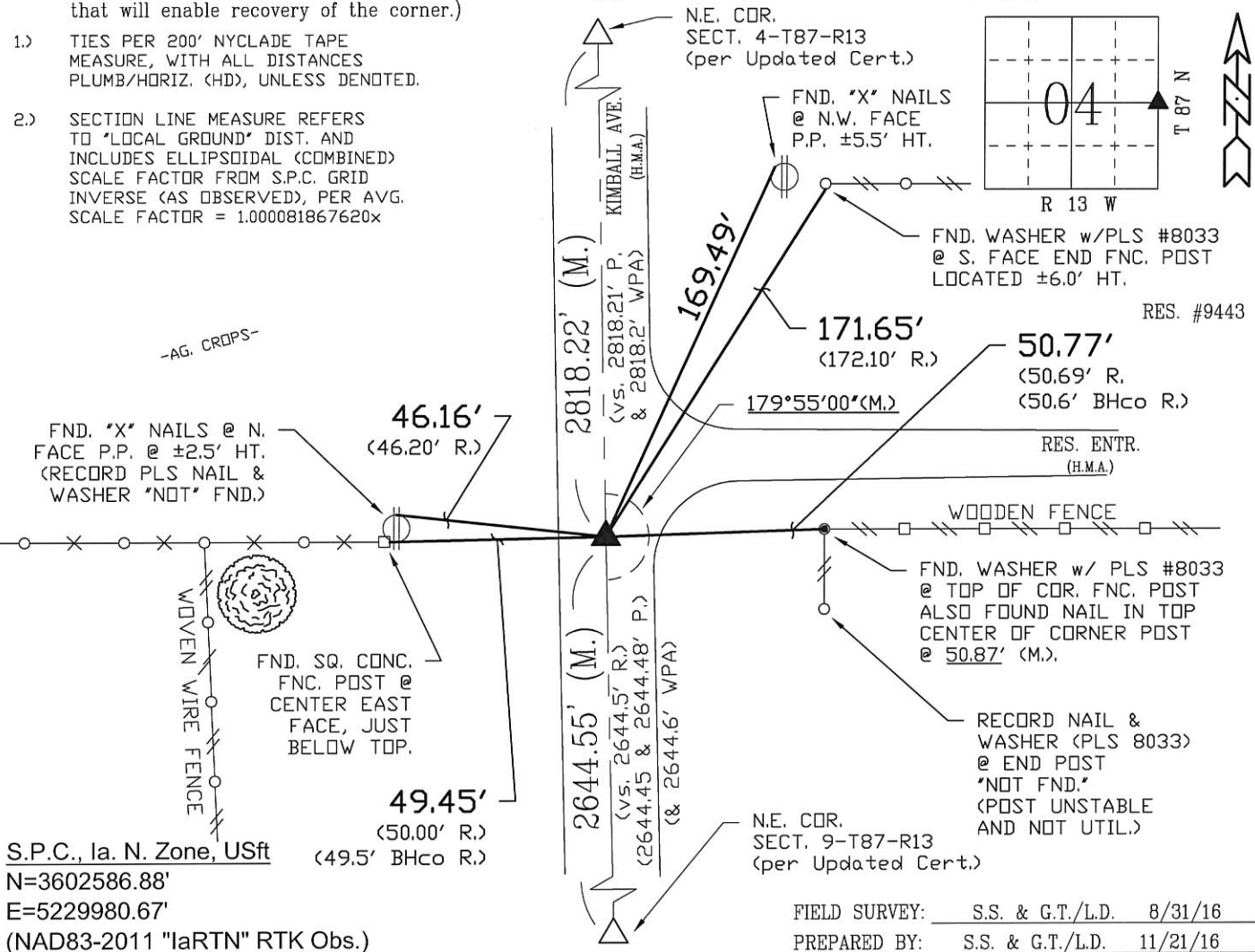
"NOT TO SCALE"

BHco Hist. Ties: BK. #1000 p.4 87-13

FIELD BOOK: (n/a), per Draft Cert. (S.S.)

(Show a minimum of three reference ties to durable physical objects, relevant monuments and physical conditions that will enable recovery of the corner.)

- 1.) TIES PER 200' NYCLADE TAPE MEASURE, WITH ALL DISTANCES PLUMB/HORIZ. (HD), UNLESS DENOTED.
- 2.) SECTION LINE MEASURE REFERS TO "LOCAL GROUND" DIST. AND INCLUDES ELLIPSOIDAL (COMBINED) SCALE FACTOR FROM S.P.C. GRID INVERSE (AS OBSERVED), PER AVG. SCALE FACTOR = 1.000081867620x



CERTIFICATION

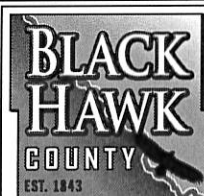


I hereby certify that this land surveying document was prepared and the related survey work was performed by me or under my direct personal supervision and that I am a duly licensed Land Surveyor under the laws of the State of Iowa.

Geoffrey Allen Tinker (date)  
License Number 15748  
My license renewal date is December 31, 2016  
Pages or sheets covered by this seal:  
This Land Corner Certificate Only.

LIST CORNERS TO BE INDEXED

Corner	Section -	Township -	Range
E. 1/4 Cor.	04	87 N.	13 W.
W. 1/4 Cor.	03	87 N.	13 W.



PREPARED BY:  
BLACK HAWK COUNTY  
ENGINEER'S DEPT.  
316 E. FIFTH ST. RM. 211  
WATERLOO, IA. 50703  
PH. 319-853-3008  
FAX. 319-853-3139  
surveyor@co.black-hawk.ia.us