

WAYNE CLAASSEN ENGINEERING AND SURVEYING, INC.
P.O. BOX 898 WATERLOO, IOWA 50704-0898

PHONE: (VOICE) 319-235-6294
(FAX) 319-235-0028

UNITED STATES PUBLIC LAND SURVEY CORNER CERTIFICATE

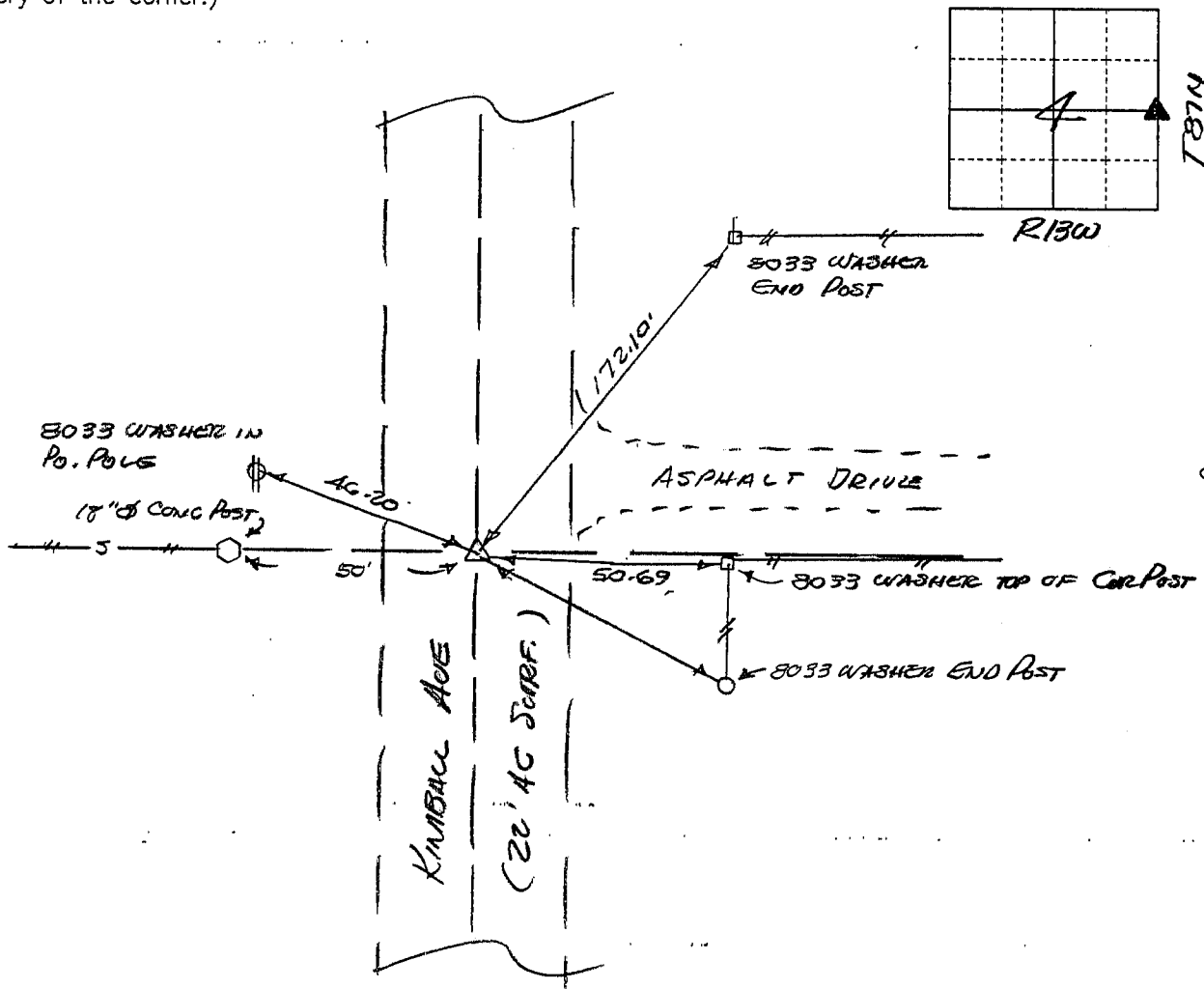
Land Survey Monuments situated in Section 4, Township 87N, Range 13W, of the Fifth Principal Meridian, BLACK HAWK County, Iowa.
Previously recorded in N/A in County Recorder's Office.
(book, page, document number, etc.)

(Show reason for preparing this certificate, the evidence and detailed procedures used in establishing the corner positions and monumentation found or placed.)

Monument Description and Remarks FOUND 1" Ø REBAR FLUSH WITH SURFACE OF ASPHALT PAVING DR. CES TIES OF 1988

PLAN - VIEW

(Show a minimum of three reference ties to durable physical objects, relevant monuments and physical conditions that will enable recovery of the corner.)



440-37

I hereby certify that the survey work was completed and this certificate was prepared by me or under my direct personal supervision and that I am a duly licensed land surveyor under the laws of the state of Iowa.

Signature: F. William King

(Name typed or printed:)

F. WILLIAM KING

Date: NOV 17 1987

Lic. No. 8033

SEAL

LICENSED

8033

IOWA

LAND SURVEYOR

List Corners to be Indexed

Corners	Section	Twp	Range
<u>E 1/4</u>	<u>4</u>	<u>87N</u>	<u>13W</u>