

# United States Public Land Survey Corner Certificate of

Land Survey Monuments situated in Section No. 3, Township No. 87 North,  
Range No. 13 West, of the Fifth Principal Meridian, Black Hawk County, Iowa  
Previously recorded in 340 Misc 230.

Show reason for preparing this certificate, the evidence and detailed procedures used in establishing the corner positions and monumentation found or placed.)

Monument Description and Remarks: Southeast 1/16 Corner -- Section 3 - T87N - R13W

340 Misc 230 calls out setting No. 4 Rebar w/Orange Cap #6505 on a line between S 1/4 corner & SE corner of Sec. 3 and in line w/fence location to the North as witnessed by LaVern Mangrich (Tenant of SW 1/4 SE 1/4 for 30 years).

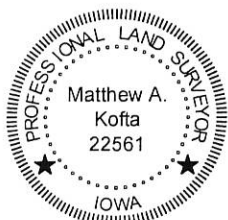
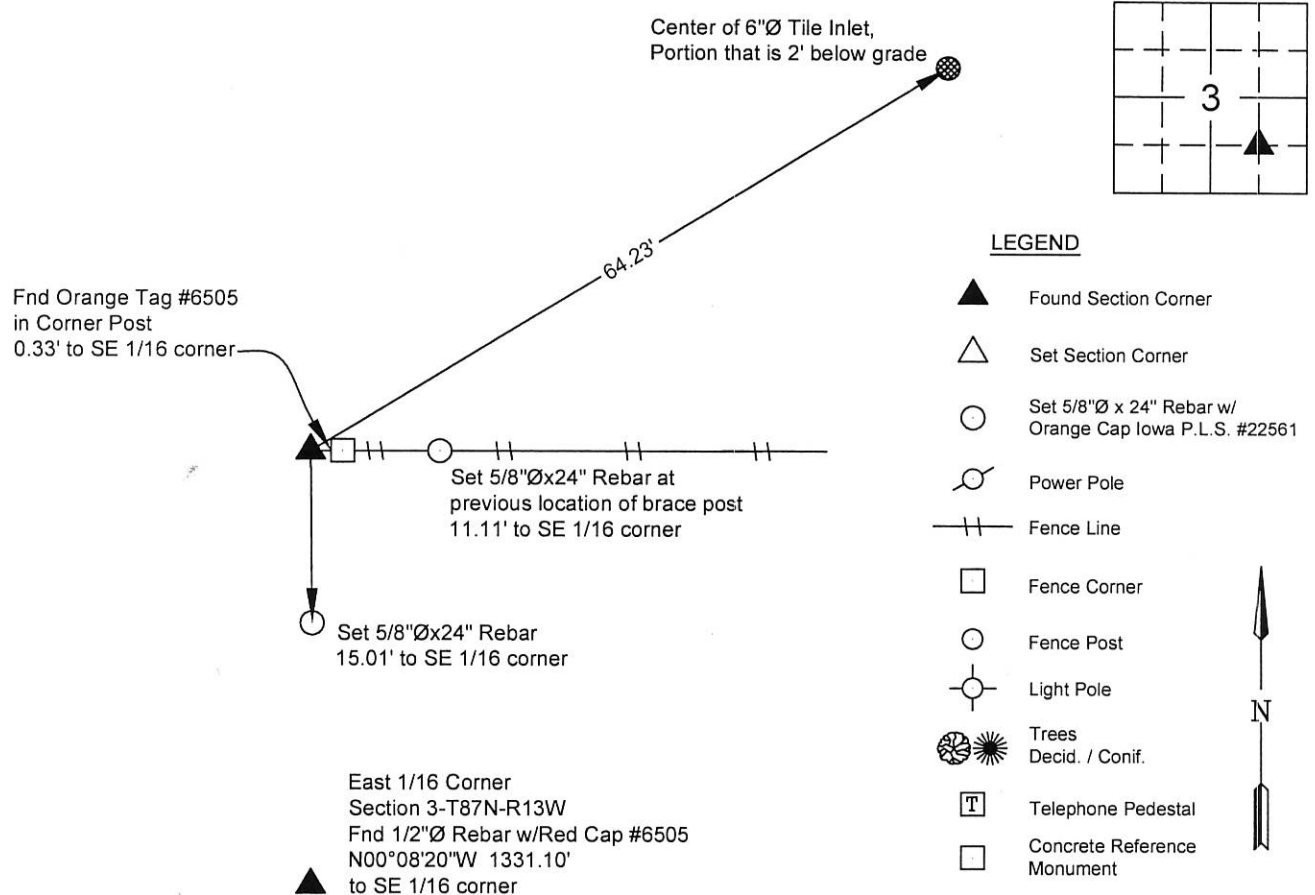
Found called for monument in previous corner certificate 4" above ground, West of corner post.

Corner was used for a survey in the SW 1/4, SE 1/4 of Section 3.

This corner certificate is being prepared to update the reference ties.

## PLAN - VIEW

(Show a minimum of three reference ties to durable physical objects, relevant monuments and physical conditions that will enable recovery of the corner.)



I hereby certify that this land surveying document was prepared and the related survey work was performed by me or under my direct personal supervision and that I am a duly licensed Land Surveyor under the laws of the State of Iowa.

Matthew A. Kofta 3/24/17  
Matthew A. Kofta, P.L.S. Date  
License Number 22561  
My license renewal date is December 31, 2018  
Pages or sheets covered by this seal: 1

### List Corner to be Indexed

Corner	Section	Twp	Range
Southeast 1/16	3	87 North	13 West



VJ Engineering  
1501 Technology Parkway  
Cedar Falls, Iowa - 319-266-5829

Section Corner  
Reference Ties

file no.  
178020  
drawn by  
MAK  
date  
3/24/17