

ENV WAYNE CLAASSEN ENGINEERING AND SURVEYING INC
WAYNE CLAASSEN ENGINEERING AND SURVEYING, INC.
P.O. BOX 898 WATERLOO, IOWA 50704-0898

PHONE: (VOICE) 319-235-6294
(FAX) 319-235-0028

UNITED STATES PUBLIC LAND SURVEY CORNER CERTIFICATE

Land Survey Monuments situated in Section 3, Township 87 North, Range 13 West, of the Fifth Principal Meridian, Black Hawk County, Iowa.
Previously recorded in (book, page, document number, etc.) in County Recorder's Office.

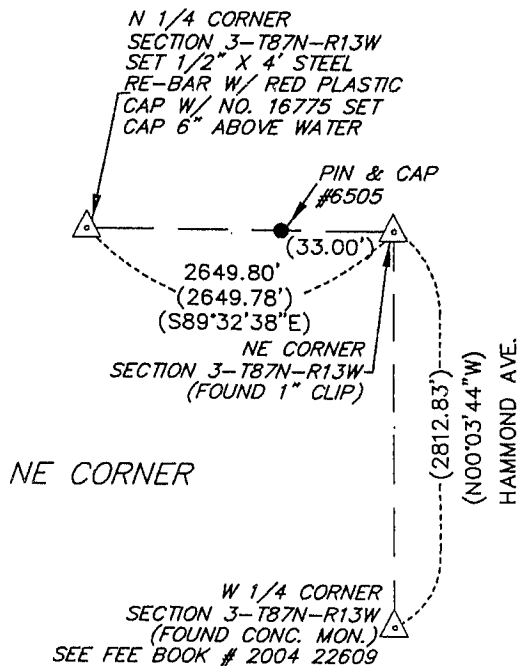
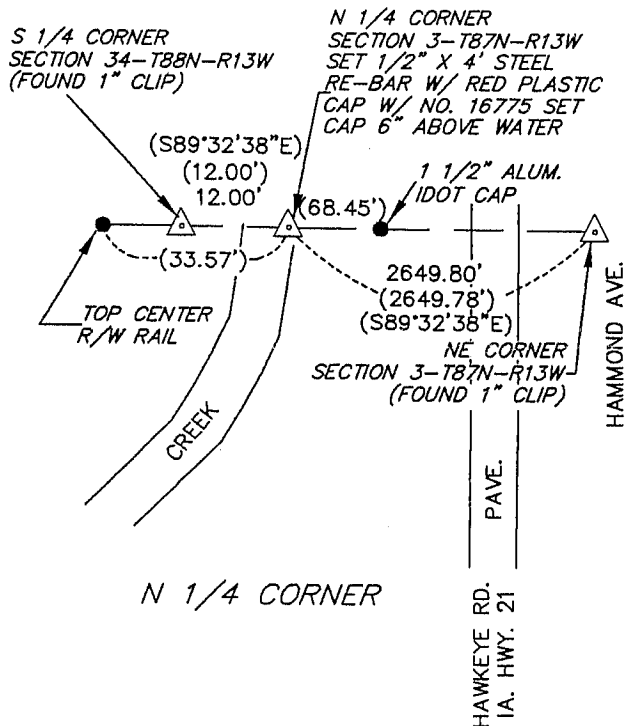
(Show reason for preparing this certificate, the evidence and detailed procedures used in establishing the corner positions and monumentation found or placed.)

Monument Description and Remarks Set 1/2" x 4' steel Rebar with red cap #16775, based upon IDOT records for Iowa Highway 21 dated 5-19-1958.

No corner certificate on file.

PLAN - VIEW

(Show a minimum of three reference ties to durable physical objects, relevant monuments and physical conditions that will enable recovery of the corner.)



NOTE: ACCORDING TO SECTION TIES TAKEN FROM WPA NOTES, SE. COR OF 34-88-13 IS 3.3' WEST OF ABOVE NE CORNER.

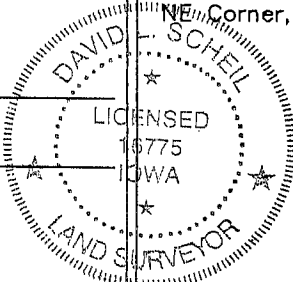
I hereby certify that the survey work was completed and this certificate was prepared by me or under my direct personal supervision and that I am a duly licensed land surveyor under the laws of the state of Iowa.

Signature: David L. Scheil
David L. Scheil, L.S.

Date: APRIL 20, 2004 Lic. No. 16775

My license renewal date is December 31, 2004

SEAL



List Corners to be Indexed

Corners	Section	Twp	Range
N 1/4 Corner,	3	87 N	13 W
NE Corner,	3	87 N	13 W