

SC
MISC
INDEX
MARGIN
PROOF
COMPARE

FILED FOR RECORD Sep 27, 2000 AT
4:00 P M., AND RECORDED IN BOOK 340
OF MISC PAGE 230
RECORDED
FEE 1-5.00x.
PAUL HELLAND

006491

Paul H. Helland, 1107 Technology Parkway, Cedar Falls, Iowa 50613-6951, (319)-266-0161

UNITED STATES PUBLIC LAND SURVEY CORNER CERTIFICATE OF

LAND SURVEY MONUMENTS SITUATED IN SECTION NO. 3, TOWNSHIP NO. 87 NORTH, RANGE
NO. 13 WEST OF THE FIFTH PRINCIPAL MERIDIAN, BLACK HAWK COUNTY, IOWA.

PREVIOUSLY RECORDED IN BOOK, PAGE.

(SHOW REASON FOR PREPARING THIS CERTIFICATE, THE EVIDENCE AND DETAILED PROCEDURES USED IN ESTABLISHING THE
CORNER POSITIONS AND MONUMENTATION FOUND OR PLACED.)

MONUMENT DESCRIPTION AND REMARKS:

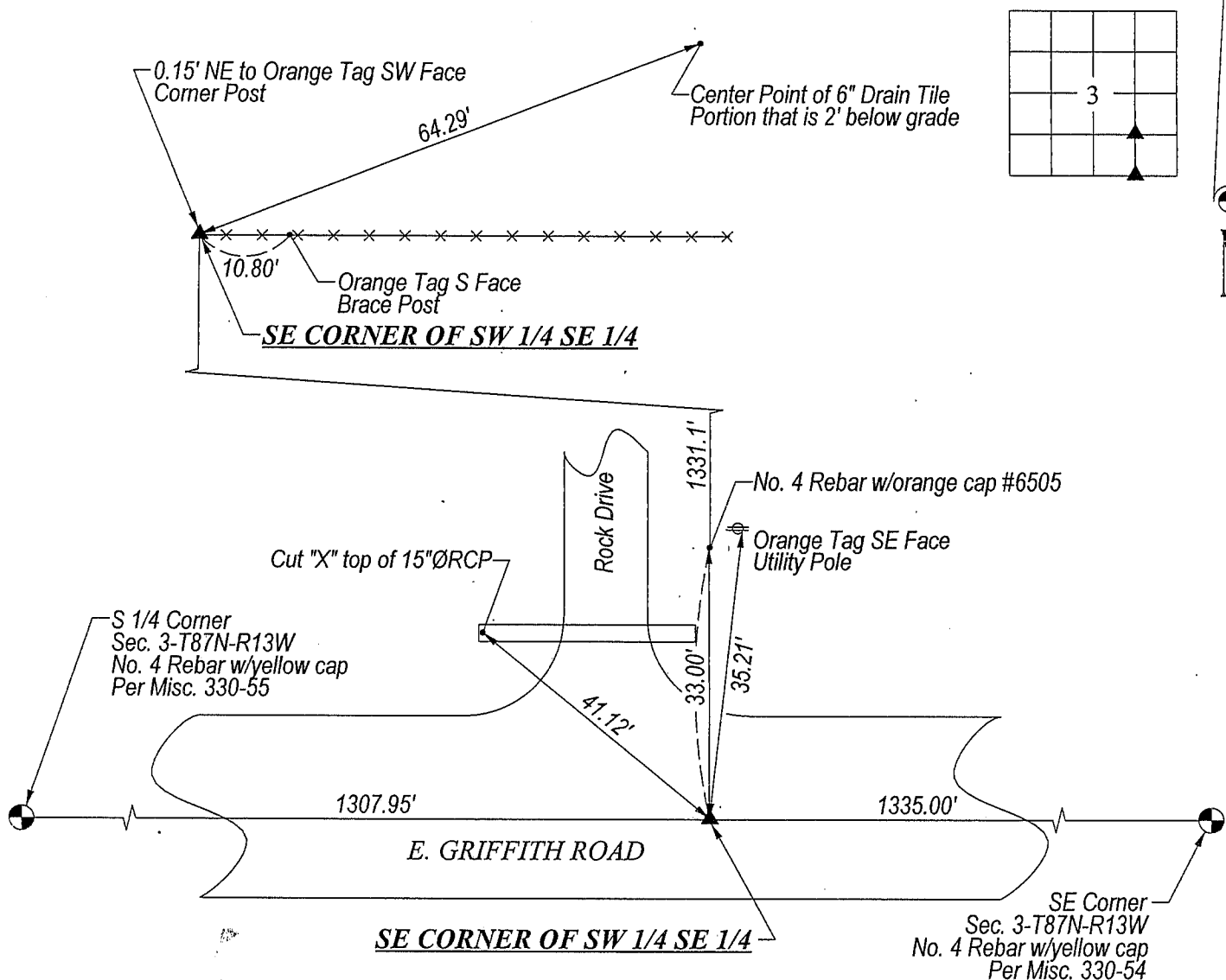
SURVEY DONE IN SW 1/4 SE 1/4 OF SEC. 3-T87N-R13W.

NE CORNER OF SW 1/4 SE 1/4: Set No. 4 Rebar w/orange cap #6505 @ SW corner of corner post.
Corner Post w/evidence of fencing North and South

SE CORNER OF SW 1/4 SE 1/4: Set No. 4 Rebar w/orange cap #6505 on a line between S 1/4 Corner & SE Corner of Sec. 3
and in line w/fence location to the North as witnessed by LaVern Mangrich (Tenant of SW 1/4 SE 1/4 for 30 years).
No county chaining notes for fence North.

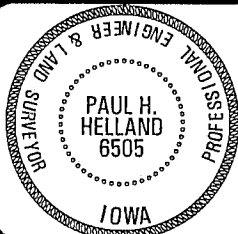
PLAN VIEW

(SHOW A MINIMUM OF THREE REFERENCE TIES TO DURABLE PHYSICAL OBJECTS, RELEVANT MONUMENTS AND PHYSICAL
CONDITIONS THAT WILL ENABLE RECOVERY OF THE CORNER.)



HELLAND ENGINEERING & SURVEYING, LTD.
1107 Technology Parkway
Cedar Falls, Iowa 50613-6951
(319)-266-0161

FILE NAME: 00-277CC.DRG



I hereby certify that this land surveying document was prepared
and the related survey work was performed by me or under my
direct personal supervision and that I am a duly licensed Land
Surveyor under the laws of the State of Iowa.

Paul H. Helland
License Number 6505
My license renewal date is December 31, 2001.
All pages or sheets are covered by this seal except:

LIST CORNERS TO BE INDEXED

CORNER	SECTION	TOWNSHIP	RANGE
NE CORNER	3	87N	13W
SW 1/4 SE 1/4			
SE CORNER	3	87N	13W
SW 1/4 SE 1/4			