

PROOF *JS* FILED FOR RECORD JAN 23, 2004, AT 11:00 A.M. FEE 1-5:00-5:00/

COMPARED

BLACK HAWK COUNTY RECORDER

ENV WAYNE CLAASSEN ENGINEERING AND SURVEYING INC PO BOX 898 WATERLOO IOWA 50704

WAYNE CLAASSEN ENGINEERING AND SURVEYING, INC.  
P.O. BOX 898 WATERLOO, IOWA 50704-0898PHONE: (VOICE) 319-235-6294  
(FAX) 319-235-0028

## UNITED STATES PUBLIC LAND SURVEY CORNER CERTIFICATE

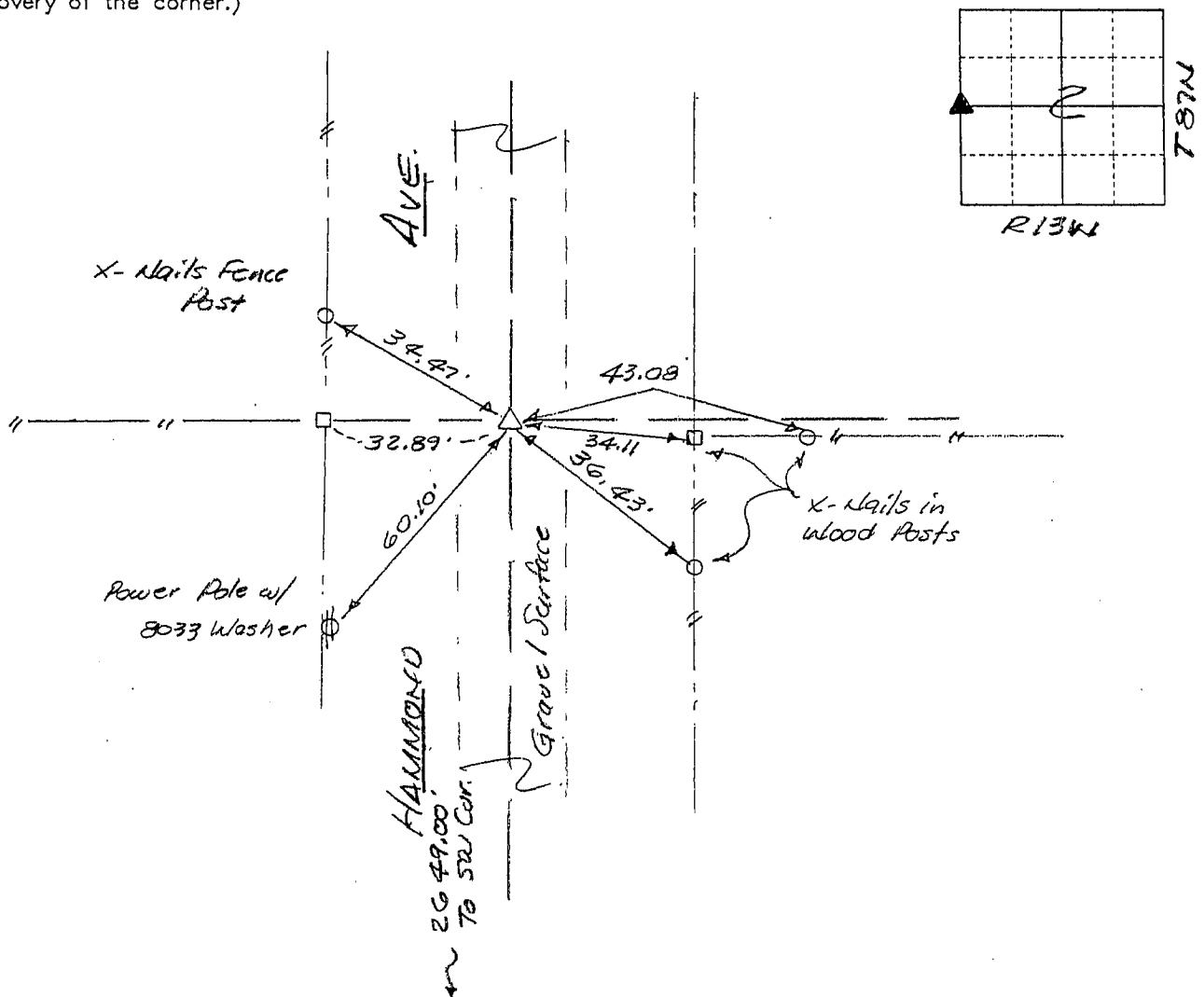
Land Survey Monuments situated in Section 2, Township 87N, Range 13W, of the Fifth Principal Meridian, Black Hawk County, Iowa.Previously recorded in N/A in County Recorder's Office.  
(book, page, document number, etc.)

(Show reason for preparing this certificate, the evidence and detailed procedures used in establishing the corner positions and monumentation found or placed.)

Monument Description and Remarks W 1/4 Corner, found std conc. monument in gravel surface roadway with 1/2" exposed. This monument was found broken in 1983 by CES. Top was reset over base with iron bar set on North side of base section in 1983.

## PLAN - VIEW

(Show a minimum of three reference ties to durable physical objects, relevant monuments and physical conditions that will enable recovery of the corner.)



608-4

I hereby certify that the survey work was completed and this certificate was prepared by me or under my direct personal supervision and that I am a duly licensed land surveyor under the laws of the state of Iowa.

Signature: F. William King

(Name typed or printed:) F. William King

Date: Jan. 19, 2004 Lic. No. 8033

SEAL

## List Corners to be Indexed

Corners	Section	Twp	Range
W 1/4	2	87N	13W

