

WAYNE CLAASSEN ENGINEERING AND SURVEYING, INC.  
P.O. BOX 898 WATERLOO, IOWA 50704-0898

PHONE: (VOICE) 319-235-6294  
(FAX) 319-235-0028

## UNITED STATES PUBLIC LAND SURVEY CORNER CERTIFICATE

Land Survey Monuments situated in Section 2, Township 87 North, Range 13 West, of the Fifth Principal Meridian, Black Hawk County, Iowa.

Previously recorded in \_\_\_\_\_ in County Recorder's Office.  
(book, page, document number, etc.)

### Monument Description and Remarks

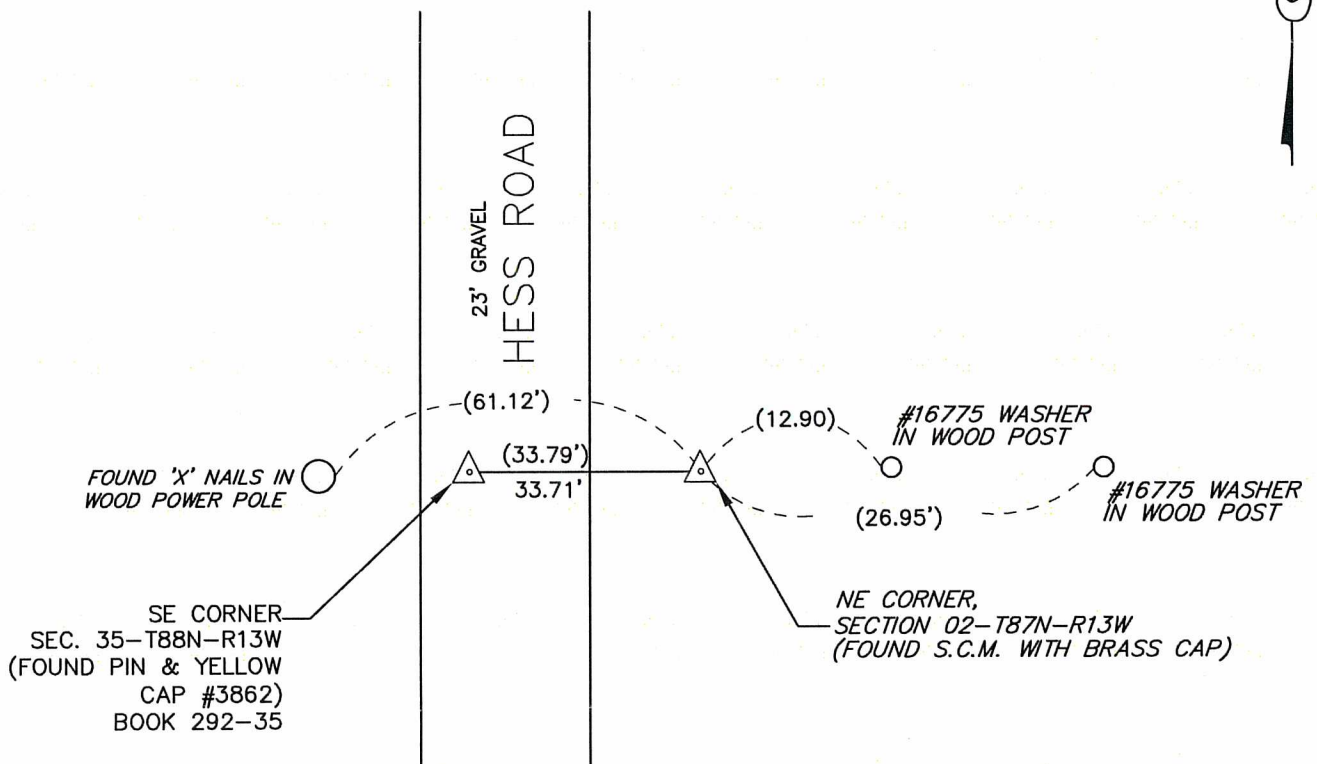
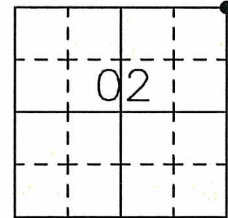
The following note was found in a field book in the Black Hawk County Engineer's office, dated Oct. 17, 1940: "At location indicated by random line dug hole 4' sq. 18" deep found niggerhead 12"x8"x3" lowered evidence in place and set C.M. on top with cap marked closing corner/ 2 1. Set top C.M. 12" deep." Plat of Survey Document No. 2004-31336 in Black Hawk County Recorder's Office, signed by Fred Debe on 10-9-03, shows "conc. mon. / brass cap". Found concrete monument with brass cap at location.

(000.00) DENOTES FIELD DIMENSION

### PLAN - VIEW

#### Reason for filing certificate:

- ☒ There is no certificate on file with the Recorder's Office.  
☐ Accepts corner position which differs from the one shown in above document.  
☐ The corner monument was replaced or modified.  
☐ The reference ties in above document were incorrect or missing.



605-82

I hereby certify that this land surveying document was prepared and the related survey work was performed by me or under my direct personal supervision and that I am a duly Licensed Land Surveyor under the laws of the State of Iowa.

Signature: David L. Scheil, L.S.

Date: DEC. 01, 2015 Lic. No. 16775

Pages or Sheets Covered by this Seal: THIS SHEET ONLY.

My license renewal date is December 31, 2016

SEAL

#### List Corners to be Indexed

Corners	Section	Twp	Range
NE CORNER,	02	87 N	13 W
NW CORNER,	01	87 N	13 W

