

Recorded

# UNITED STATES PUBLIC LAND SURVEY CORNER CERTIFICATE

OF

Land Survey Monuments situated in Section 35 Township 88 North, Range 13 West, of the Fifth Principal Meridian, Black Hawk County, Iowa.  
Previously recorded in Book (none), Page .

(Show reason for preparing this certificate, the evidence and detailed procedures used in establishing the corner positions and monumentation found or placed.)

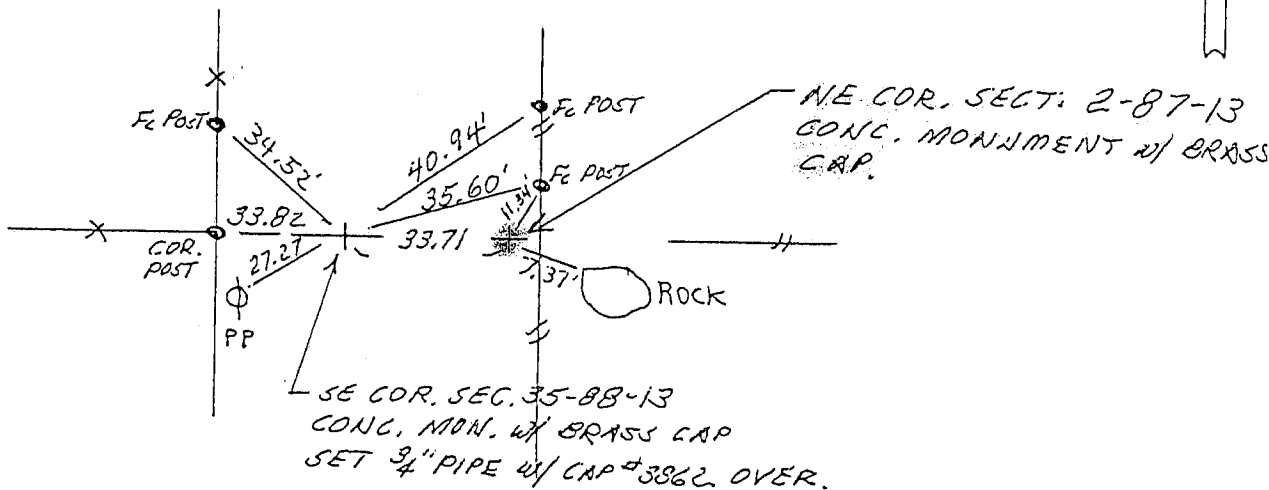
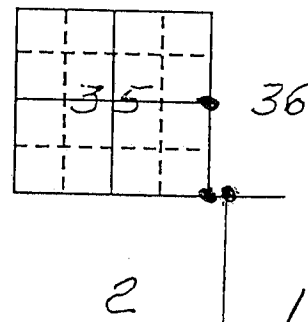
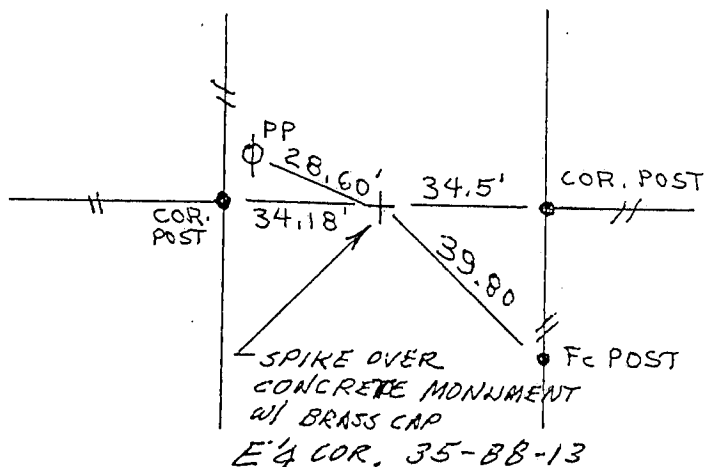
## Monument Description and Remarks:

E $\frac{1}{4}$  corner: Ties intersected at bridge spike over concrete monument.  
Placed new ties.

SE corner: Found concrete monument. Placed new ties. Set  $\frac{3}{4}$ " pipe  
over monument w/ reg. cap #3862.

## PLAN - VIEW

(Show a minimum of three reference ties to durable physical objects. relevant monuments and physical conditions that will enable recovery of the corner.)

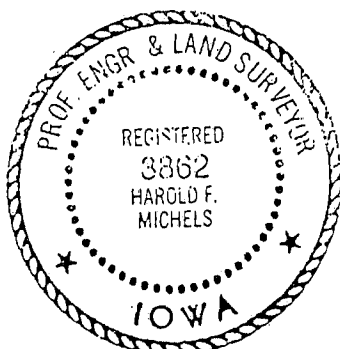


I hereby certify that the survey work was completed and this certificate was prepared by me or under my direct personal supervision and that I am a duly registered land surveyor under the laws of the state of Iowa.

Harold F. Michels

REGISTERED LAND SURVEYOR NO. 3862

SEAL



## List Corners to be Indexed

Corners	Section	Twp	Range
E $\frac{1}{4}$	35	88	13
SE	35	88	13
NE	2	87	13

MISC. BK. 292 p. 35