

File **2015-00009463**

UNITED STATES PUBLIC LAND SURVEY CORNER CERTIFICATE

This certificate is being prepared in compliance with Iowa Code Chapter 355.11 because:

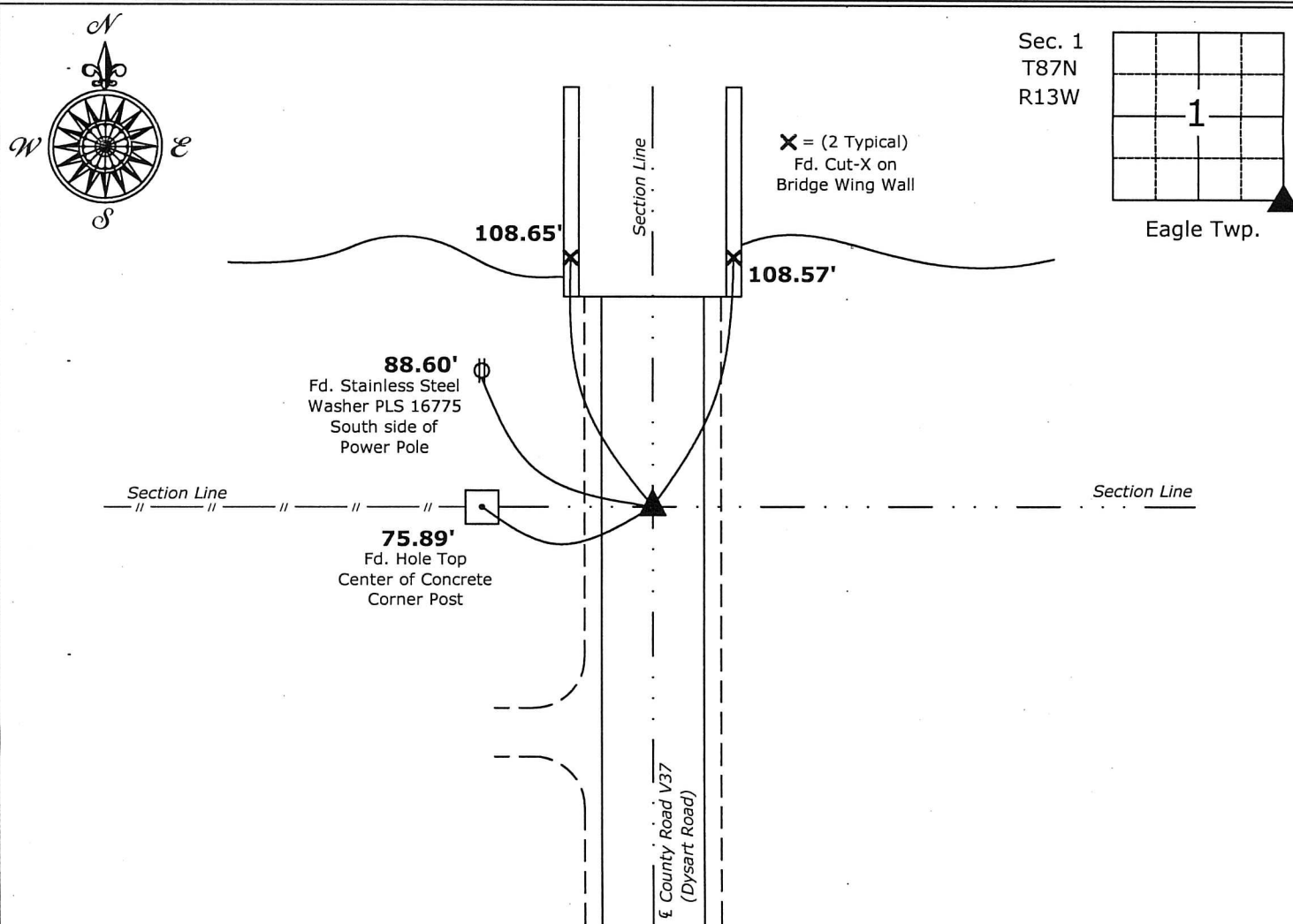
- ☐ There is no certificate on file for this corner.
☐ There are no longer three valid ties of record.
☐ There are changes to reference ties of record.
☒ There is change of monumentation of record.
☐ To clarify description of record monument (ties).

Monument Description and Remarks:

Southeast Corner: Set 1"Ø Bronze Survey Marker PLS 19211 at previous location (Found 5/8"Ø Rebar) by means of coordinates obtained prior to highway reconstruction, Project No. FM-TSF-C007(130)--5B-07.

PLAN - VIEW

(Show a minimum of three reference ties to durable physical objects, relevant monuments and physical conditions that will enable recovery of the corner.)



Southeast Corner Section 1-87-13
Set 1"Ø Bronze Survey Marker PLS 19211



I hereby certify that this land surveying document was prepared and the related survey work was performed by me or under my direct personal supervision and that I am a duly licensed Land Surveyor under the laws of the State of Iowa.

Kirk D. Reuter 12-4-14

Kirk D. Reicks

Date:

License number 19211

My license renewal date is December 31, 2014.

My license renewal date is December 31, 2011.
 Sheets covered by this seal: Individual sheet only

List Corners to be Indexed

Corners	Section	Twp.	Range
SE	1	87	13

Project Number: 2014-135

FB: Black Hawk County 1, Pg. 17

File: S:_C3D Projects\2014\2014-135 (BH Co-Dysart)\2014-135.dwg, 11/17/2014 4:57:42 PM