

Prepared by & Return to: Herold - Reicks Surveying, 10 East Main Street, New Hampton, IA 50659, Ph. 641-394-2725

UNITED STATES PUBLIC LAND SURVEY CORNER CERTIFICATE

Land Survey Monuments situated in Section 1, Township 87 North, Range 13 West of the Fifth Principal Meridian, Black Hawk County, Iowa. 1.) Previously recorded in Doc. #2007-005656 in the County Recorder's office. 2.) Previously recorded in Doc. #2007-005866 in the County Recorder's office.

This certificate is being prepared in compliance with Iowa Code Chapter 355.11 because:

- 2 ☐ There is no certificate on file for this corner.
1 & 2 ☐ There are no longer three valid ties of record.
1 & 2 ☒ There are changes to reference ties of record.
1 & 2 ☒ There is change of monumentation of record.
☐ To clarify description of record monument (ties).

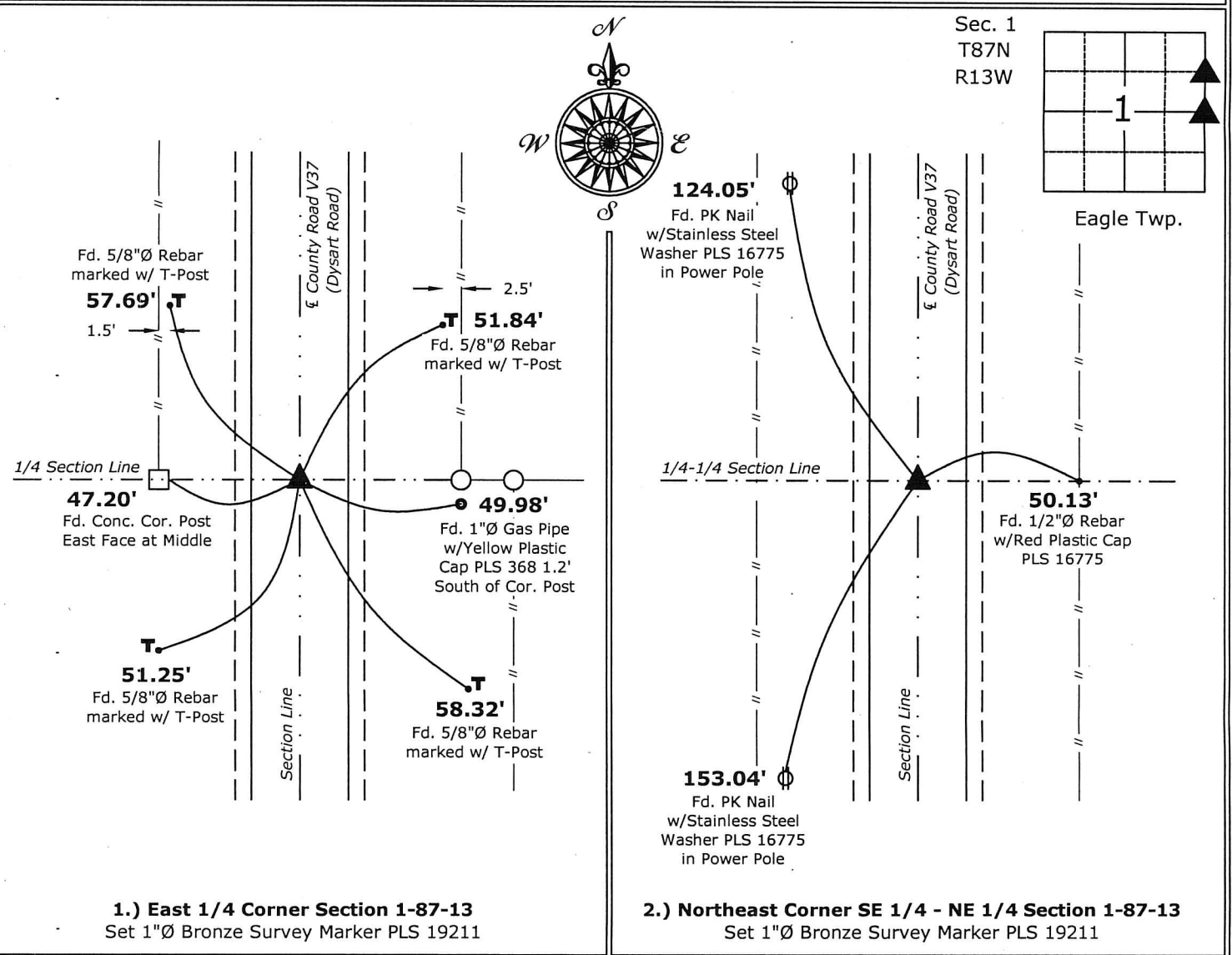
Monument Description and Remarks:

1.) East 1/4 Corner: Set 1"Ø Bronze Survey Marker PLS 19211 at previous location (Found 5/8"Ø Rebar) by means of coordinates obtained prior to highway reconstruction, Project No. FM-TSF-C007(130)--5B-07.

2.) Northeast Corner SE 1/4 - NE 1/4: Set 1"Ø Bronze Survey Marker PLS 19211 at previous location (Found Mag Nail w/Stainless Steel Washer PLS 16775) by means of coordinates obtained prior to highway reconstruction, Project No. FM-TSF-C007(130)--5B-07.

PLAN - VIEW

(Show a minimum of three reference ties to durable physical objects, relevant monuments and physical conditions that will enable recovery of the corner.)



I hereby certify that this land surveying document was prepared and the related survey work was performed by me or under my direct personal supervision and that I am a duly licensed Land Surveyor under the laws of the State of Iowa.
Kirk D. Reicks 12-4-14
Kirk D. Reicks Date:
License number 19211
My license renewal date is December 31, 2014.
Sheets covered by this seal: Individual sheet only

List Corners to be Indexed			
Corners	Section	Twp.	Range
E 1/4	1	87	13
NE-SE-NE	1	87	13
Project Number: 2014-135			
FB: Black Hawk County 1, Pg. 17			