

I RS  
P  
Z

Document Number: 2007005656  
Date: Sep 06, 2006 4:30:00 pm  
Aud Fee: 0.00 Rec Fee: 0.00  
Trans Tax: 0.00 Rec Management Fee: 0.00  
E-Com Fee: 0.00 Non-Standard Page Fee: 0.00  
Filed for record in Black Hawk County, Iowa  
Patricia S. Sass, County Recorder

PREPARED BY: BLACK HAWK COUNTY ENGINEERS OFFICE  
316 E. FIFTH STREET, ROOM 211 WATERLOO, IOWA 50703  
PH.# (319) 833-3008 SLSI 9-94  
FAX.# (319) 833-3139 CERT 12-96

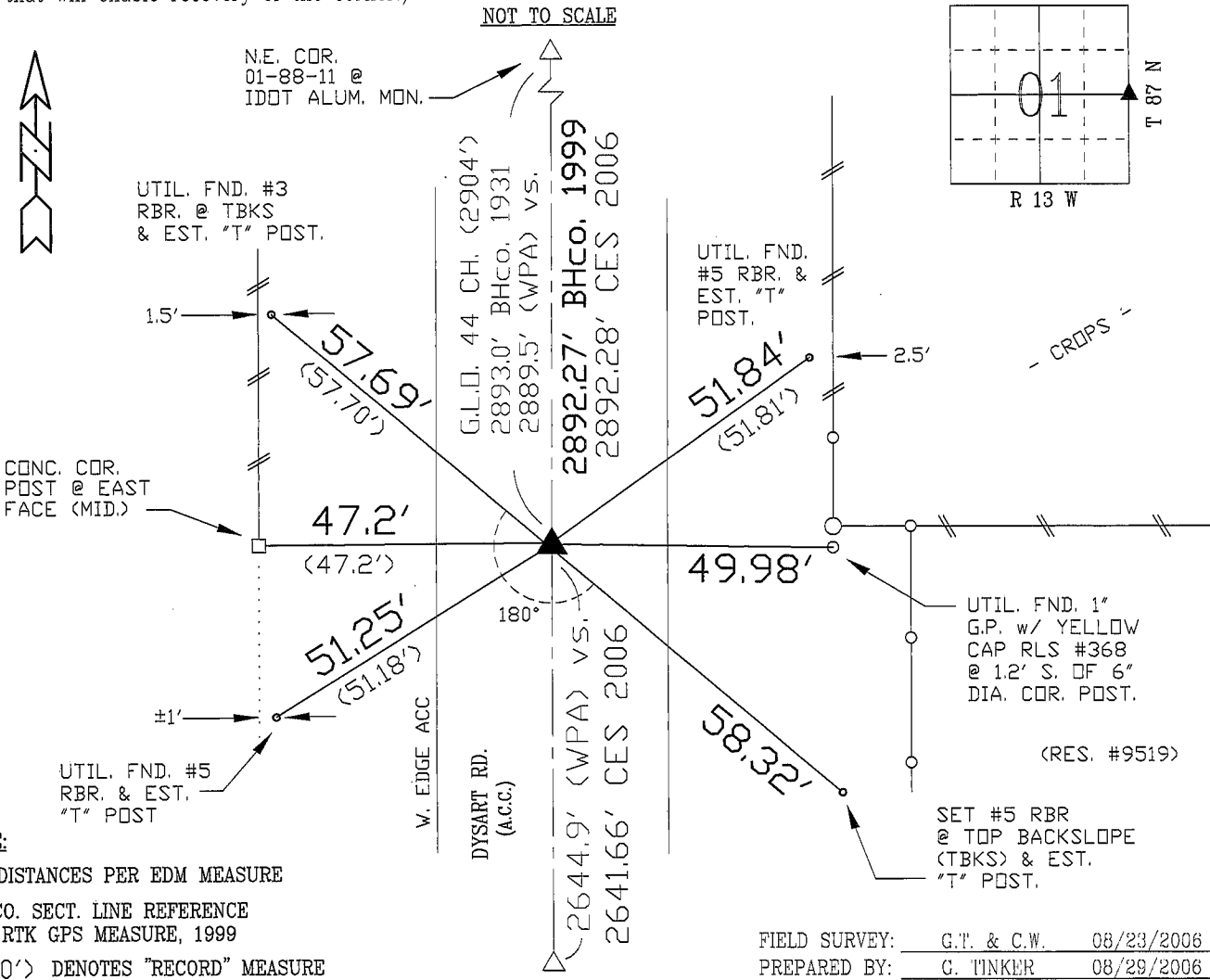
UNITED STATES PUBLIC LAND SURVEY CORNER CERTIFICATE OF  
Land Survey Monuments situated in Section 01, Township 87 N,  
Range 13 W, of the Fifth Principal Meridian, BLACK HAWK County, Iowa.  
Previously recorded in Misc. Book n/a, Page n/a, in County Recorder's Office.

(Show reason for preparing this certificate, the evidence and detailed procedures used in establishing the corner positions and monumentation found or placed.)

Monument Description and Remarks: #5 RBR. IN ACC SURFACE. CORNER TEMP.  
TIED (RTK GPS) & RESET DURING 1999 ACC RESURF. PROJECT. PLS #16775  
CONCERN WITH LOC. NOT SAME AS PREV., OR IN PROPORTION TO WPA MEAS.  
w/ AREA SURVEY YEILDING ± CONSISTANT WITH WPA RECORDS. 1999 DIST.  
PER "PRIOR" #5 RBR. FND. CHECKS WITH PRELIM. C.E.S. MEAS., BEING ± SAME  
AS RE-SET BY COUNTY IN 1999. REF. 6/12/1952 CO. TIES AS DENOTED, AND  
ALSO FND. 1" PIPE CAPPED "RLS 386" IN EAST R.O.W FNC., AT EXIST. COR.  
POST. ADDITIONAL UNDATED TIES IN "RED DOT" FIELD BK. ALSO VERIFIED ±.

PLAN - VIEW

(Show a minimum of three reference ties to durable physical objects, relevant monuments and physical conditions that will enable recovery of the corner.)

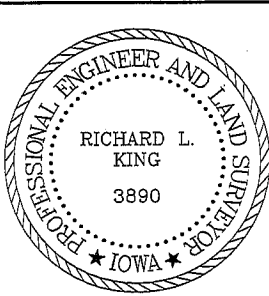


NOTE:

TIE DISTANCES PER EDM MEASURE  
BH CO. SECT. LINE REFERENCE  
PER RTK GPS MEASURE, 1999  
(0.00') DENOTES "RECORD" MEASURE

FIELD SURVEY: G.T. & C.W. 08/23/2006  
PREPARED BY: G. TINKER 08/29/2006

CERTIFICATION



I hereby certify that this land surveying document was prepared and the related survey work was performed by me or under my direct personal supervision and that I am a duly licensed Land Surveyor under the laws of the State of Iowa.  
Richard L. King  
License Number 3890  
My license renewal date is December 31, 2005  
Pages or sheets covered by this seal:  
This Land Corner Certificate Only.

LIST CORNERS TO BE INDEXED

Corner	Section	Township	Range
E. 1/4	01	87 N	13 W
W. 1/4	06	87 N	12 W