

WJS

INDEX *13*

BLACK HAWK COUNTY, IOWA:ss

FEE BOOK # 2006 25525

PROOF *js*

FILED FOR RECORD APR 24, 2006, AT 11:00 A.M. FEE 1-5.00X-1.00X

COMPARED

Jeffrey P. Helland

BLACK HAWK COUNTY RECORDER

HELLAND ENGINEERING & SURVEYING

Jeffrey P. Helland, 1107 Technology Parkway, Cedar Falls, Iowa 50613-6951, (319)-266-0161

UNITED STATES PUBLIC LAND SURVEY CORNER CERTIFICATE OF

LAND SURVEY MONUMENTS SITUATED IN SECTION NO. 36, TOWNSHIP NO. 87 NORTH, RANGE NO. 12 WEST OF THE FIFTH PRINCIPAL MERIDIAN, BLACK HAWK COUNTY, IOWA.

PREVIOUSLY RECORDED IN _____.

(SHOW REASON FOR PREPARING THIS CERTIFICATE, THE EVIDENCE AND DETAILED PROCEDURES USED IN ESTABLISHING THE CORNER POSITIONS AND MONUMENTATION FOUND OR PLACED.)

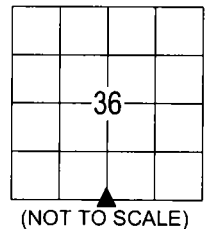
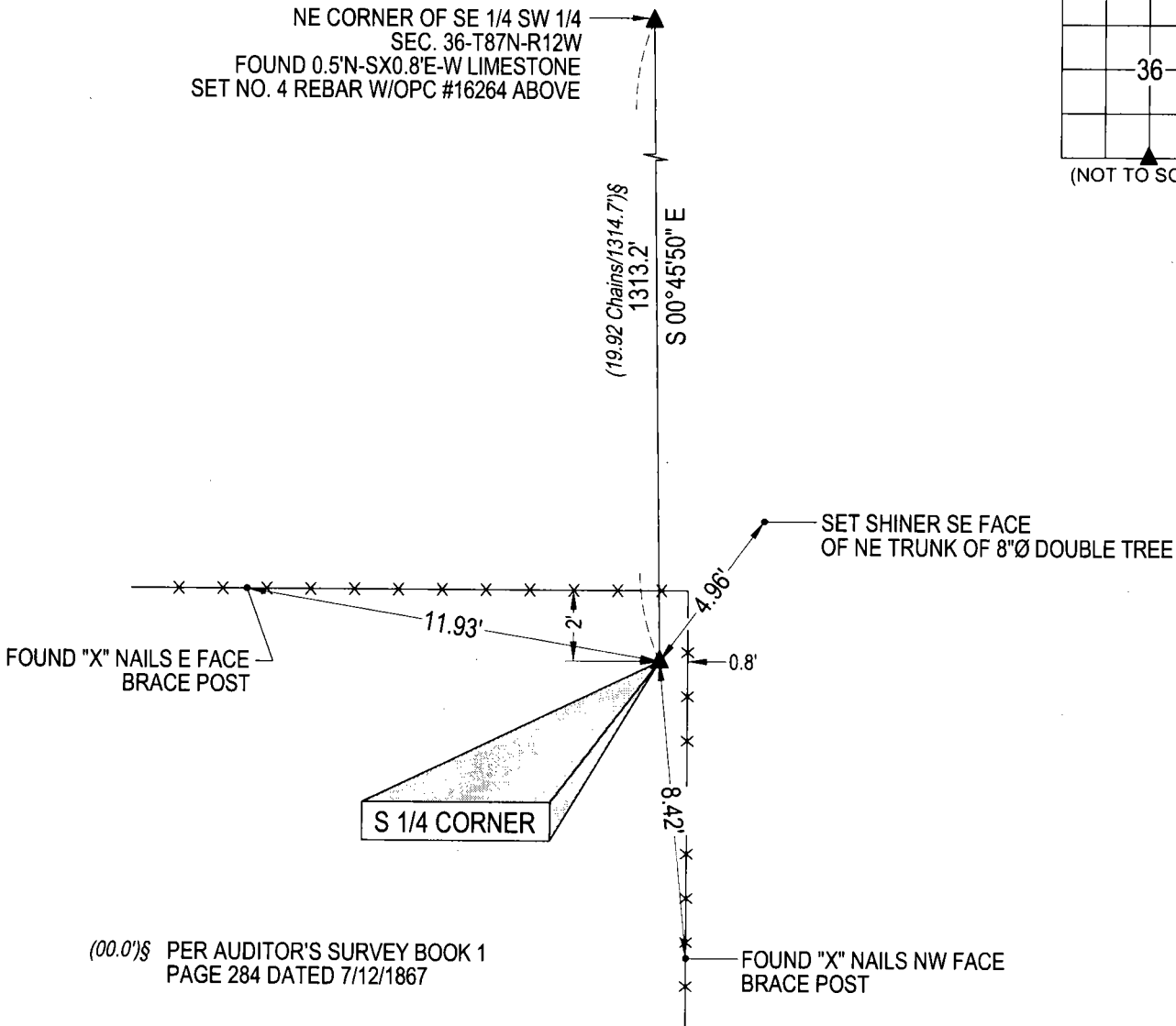
MONUMENT DESCRIPTION AND REMARKS:

No USPLSCC on file. Survey completed in the NW 1/4 and the SW 1/4 of Sec. 36-T87N-R12W.

→ S 1/4 CORNER: Auditor's Survey Book 1 Page 284 dated 7/12/1867 calls for a "Stone." Black Hawk County Engineer reference ties call for "found limestone 6"x6½"x14", set S.C.M." Found standard concrete monument w/brass cap 0.2' deep.

PLAN VIEW

(SHOW A MINIMUM OF THREE REFERENCE TIES TO DURABLE PHYSICAL OBJECTS, RELEVANT MONUMENTS AND PHYSICAL CONDITIONS THAT WILL ENABLE RECOVERY OF THE CORNER.)



(Bearings are based upon Geodetic North)

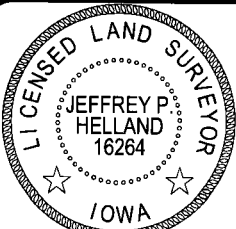


HELLAND ENGINEERING & SURVEYING, LTD.
1107 Technology Parkway
Cedar Falls, Iowa 50613-6951
(319)-266-0161

shiner = 8d nail & 1 15/16"Ø metal shiner
OPC = Plastic cap (O=orange, R=red, Y=yellow)

(00') Recorded As

File Name: 06-131c2.dwg



I hereby certify that this land surveying document was prepared and the related survey work was performed by me or under my direct personal supervision and that I am a duly licensed Land Surveyor under the laws of the State of Iowa.

Jeffrey P. Helland 4/4/06
Jeffrey P. Helland
License Number 16264
My license renewal date is December 31, 2007.
All pages or sheets are covered by this seal except:

LIST CORNERS TO BE INDEXED

CORNER	SECTION	TOWNSHIP	RANGE
S 1/4 CORNER	36	87N	12W