

HELLAND ENGINEERING & SURVEYING LTD

Paul H. Helland, 1107 Technology Parkway, Cedar Falls, Iowa 50613-6951, (319)-266-0161

UNITED STATES PUBLIC LAND SURVEY CORNER CERTIFICATE OF

LAND SURVEY MONUMENTS SITUATED IN SECTION NO. 36, TOWNSHIP NO. 87 NORTH, RANGE NO. 12 WEST OF THE FIFTH PRINCIPAL MERIDIAN, BLACK HAWK COUNTY, IOWA.

PREVIOUSLY RECORDED IN BOOK _____, PAGE _____.

(SHOW REASON FOR PREPARING THIS CERTIFICATE, THE EVIDENCE AND DETAILED PROCEDURES USED IN ESTABLISHING THE CORNER POSITIONS AND MONUMENTATION FOUND OR PLACED.)

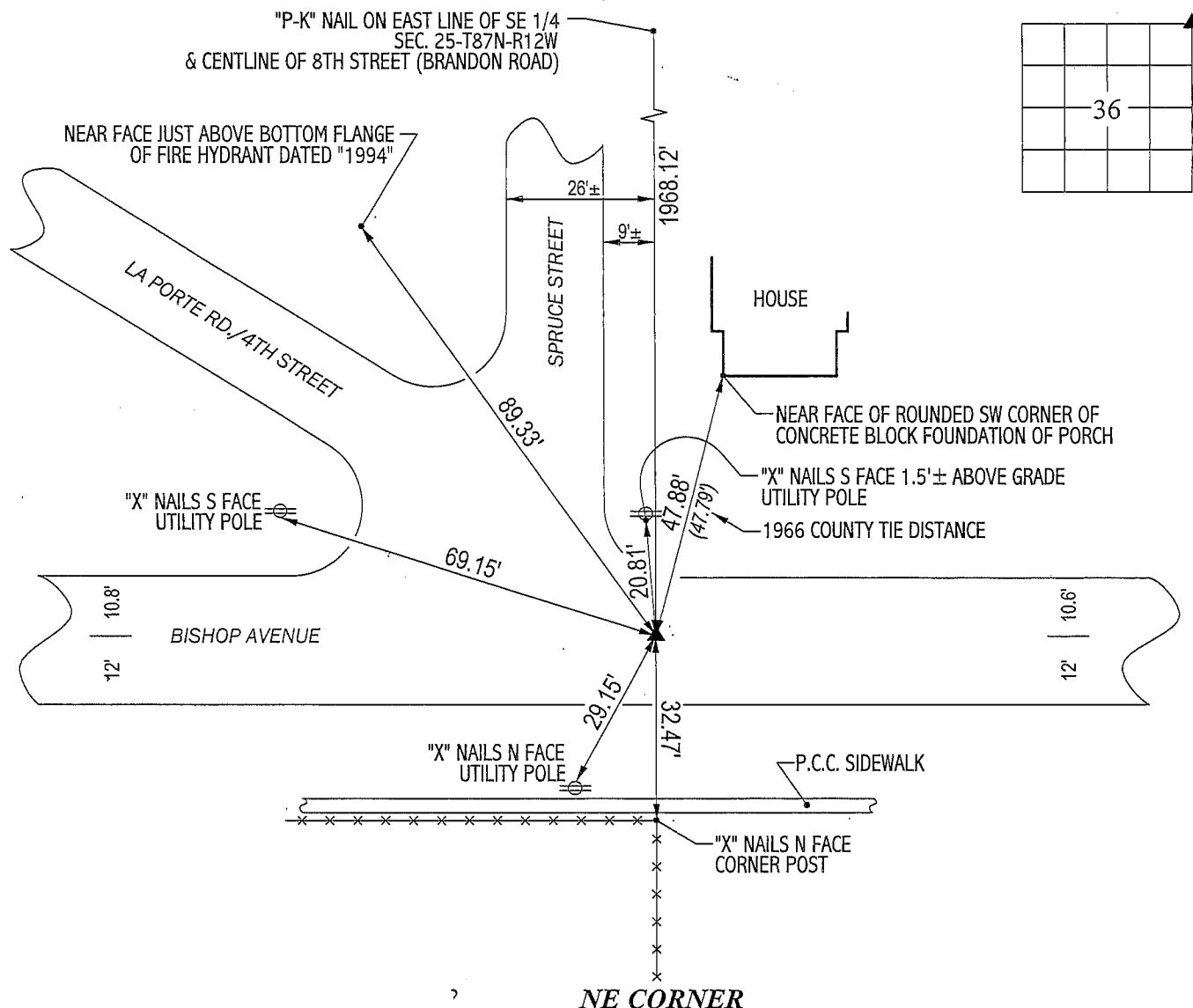
MONUMENT DESCRIPTION AND REMARKS:

NO CORNER CERTIFICATE ON FILE. SURVEY DONE IN LOT 1 OF "WATSON'S ADDITION", BLOCK 2 OF "WATSON'S SUBDIVISION" AND BLOCK 11 OF "RAILROAD ADDITION" IN THE CITY OF LA PORTE.

NE CORNER: FOUND SMALL "P-K" NAIL IN A.C.C. PAVEMENT IN THE CENTER OF A LARGE PAINTED "X". NAIL CORRESPONDS TO BLACK HAWK COUNTY ENGINEER TIES DATED 11/1/1966. REMOVED "P-K" NAIL AND REPLACED w/"MAG" NAIL FOR BETTER MAGNETIC DETECTION & SIZE.

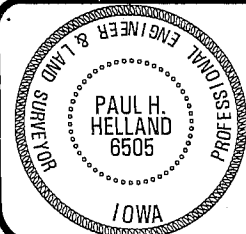
PLAN VIEW

(SHOW A MINIMUM OF THREE REFERENCE TIES TO DURABLE PHYSICAL OBJECTS, RELEVANT MONUMENTS AND PHYSICAL CONDITIONS THAT WILL ENABLE RECOVERY OF THE CORNER.)



HELLAND ENGINEERING & SURVEYING, LTD.
1107 Technology Parkway
Cedar Falls, Iowa 50613-6951
(319)-266-0161

FILE NAME: 02-249CC.DRG



I hereby certify that this land surveying document was prepared and the related survey work was performed by me or under my direct personal supervision and that I am a duly licensed Land Surveyor under the laws of the State of Iowa.

Paul H. Helland 9/12/02
Paul H. Helland
License Number 6505
My license renewal date is December 31, 2003.
All pages or sheets are covered by this seal except:

LIST CORNERS TO BE INDEXED

CORNER	SECTION	TOWNSHIP	RANGE
NE CORNER	36	87N	12W

Paul