

Patricia A. Luss

HELLAND ENGINEERING & SURVEYING LTD 1107 TECHNOLOGY PARKWAY CEDAR FALLS IOWA 50613 6951

Paul H. Helland, 1107 Technology Parkway, Cedar Falls, Iowa 50613-6951, (319)-266-0161

UNITED STATES PUBLIC LAND SURVEY CORNER CERTIFICATE OF

LAND SURVEY MONUMENTS SITUATED IN SECTION NO. 35, TOWNSHIP NO. 87 NORTH, RANGE NO. 12 WEST OF THE FIFTH PRINCIPAL MERIDIAN, BLACK HAWK COUNTY, IOWA.

PREVIOUSLY RECORDED IN _____

(SHOW REASON FOR PREPARING THIS CERTIFICATE, THE EVIDENCE AND DETAILED PROCEDURES USED IN ESTABLISHING THE CORNER POSITIONS AND MONUMENTATION FOUND OR PLACED.)

MONUMENT DESCRIPTION AND REMARKS:

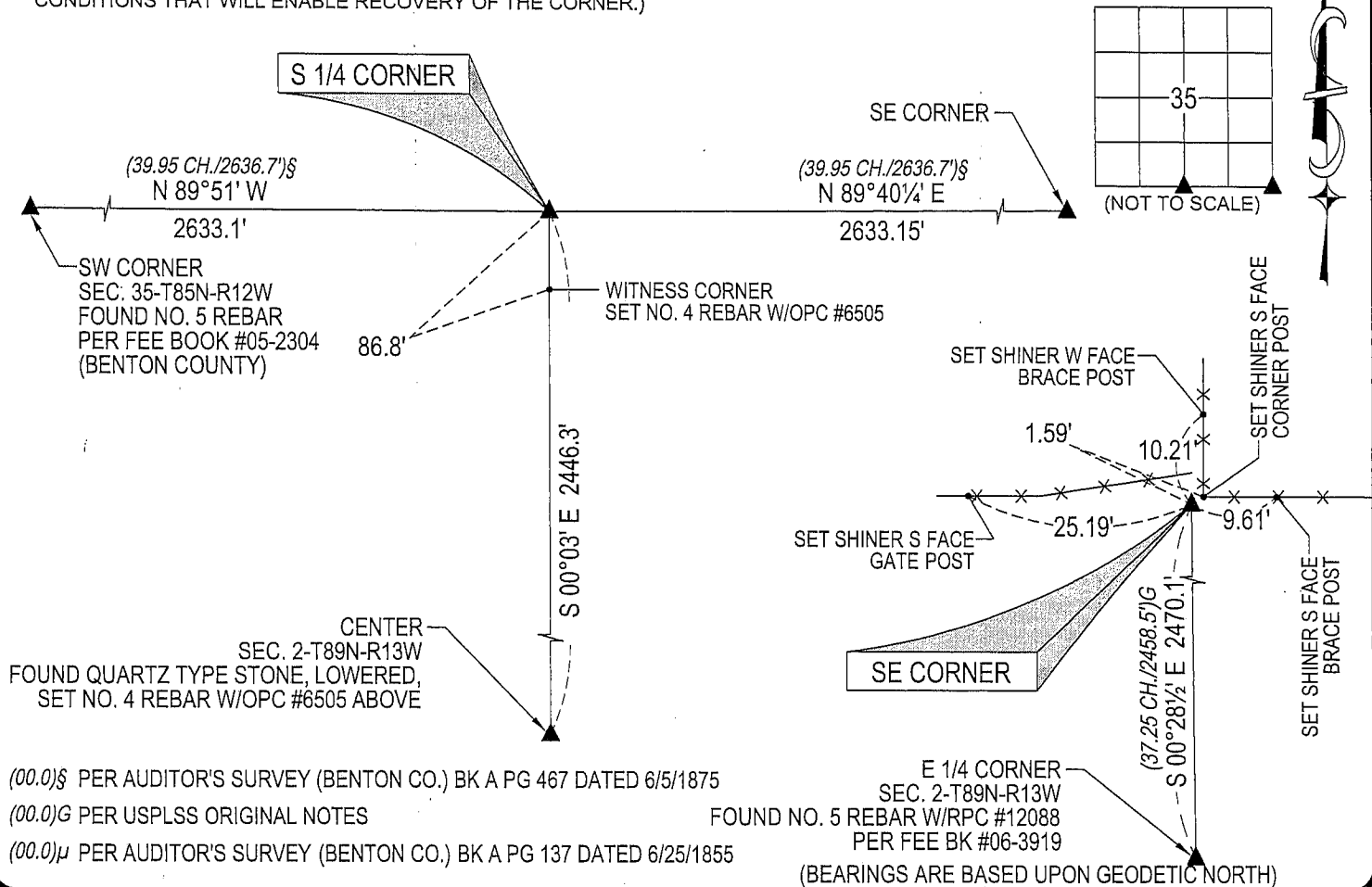
NO USPLSCC ON FILE. SURVEY COMPLETED IN THE NWRL 1/4 OF SEC. 2-T86N-R12W.

→ **S 1/4 CORNER:** BENTON CO. AUDITOR'S SURVEY BK A PG 467 DATED 6/4/1875 CALLS FOR A [WITNESS CORNER, STONE 50 LINKS EAST OF TRUE CORNER]. NO BENTON COUNTY ENGINEER REFERENCE TIES AVAILABLE. BLACK HAWK COUNTY WPA NOTES DATED 11/27/1939 CALLS FOR [FOUND OLD OAK HUB VERY ROTTEN 14"x3"x3", LOWERED, SET CM WITH CAP ON TOP]. ALL EVIDENCE OF CORNER OBLITERATED BY BIG CREEK. ESTABLISHED CORNER AT EQUAL DISTANCES FROM THE NW CORNER & NE CORNER AND IN LINE W/FENCE RUNNING WEST. CORNER FALLS IN SAID BIG CREEK, SET WITNESS CORNER NO. 4 REBAR W/OPC #6505 ON EAST LINE OF NWRL 1/4 86.8' SOUTH OF THE N 1/4 CORNER.

→ **SE CORNER:** BENTON CO. AUDITOR'S SURVEY BK A PG 467 DATED 6/4/1875 CALLS FOR A [STONE] NO BENTON COUNTY ENGINEER REFERENCE TIES AVAILABLE. BLACK HAWK COUNTY WPA NOTES DATED 11/22/1939 CALLS FOR [FOUND LIMESTONE 18"x10"x6", LOWERED AND SET CM ON TOP WITH CAP]. FOUND TOP 15" OF BROKEN-OFF STD. CONCRETE MONUMENT W/BRASS CAP, CONTINUED EXCAVATION, FOUND BASE 1.5' DEEP, LEANING ELY, STRAIGHTENED BASE AND SET TOP 15" PORTION ON THE BASE, ALSO FOUND 2"x4"x12" LIMESTONE ON NORTH EDGE OF BASE OF C.M. SET NO. 4 REBARS ON ALL FOUR SIDES FOR STABILITY & MAGNETIC DETECTION, TOP OF SAID C.M. IS FLUSH.

PLAN VIEW

(SHOW A MINIMUM OF THREE REFERENCE TIES TO DURABLE PHYSICAL OBJECTS, RELEVANT MONUMENTS AND PHYSICAL CONDITIONS THAT WILL ENABLE RECOVERY OF THE CORNER.)



HELLAND ENGINEERING & SURVEYING, LTD.
1107 Technology Parkway
Cedar Falls, Iowa 50613-6951
(319)-266-0161

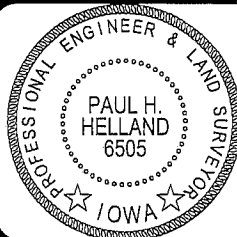
SHINER = 8D NAIL & 1 15/16" Ø METAL SHINER
OPC = PLASTIC CAP (O=ORANGE, R=RED, Y=YELLOW)

(00') RECORDED AS

FILE NAME: 06-184C4.DWG

LIST CORNERS TO BE INDEXED

CORNER	SECTION	TOWNSHIP	RANGE
S 1/4 CORNER	35	87N	12W
SE CORNER	35	87N	12W



I hereby certify that this land surveying document was prepared and the related survey work was performed by me or under my direct personal supervision and that I am a duly licensed Land Surveyor under the laws of the State of Iowa.

Paul H. Helland
Paul H. Helland
License Number 6505
My license renewal date is December 31, 2007.
All pages or sheets are covered by this seal except: