

WTS INDEX ✓ BLACK HAWK COUNTY, IOWA:SS FEE BOOK # 2005 24577

PROOF ✓ FILED FOR RECORD APR 25 2005 AT 2:00 P.M. FEE 1-5.00-1.00/

COMPARED Patricia L. Jones BLACK HAWK COUNTY RECORDER

ENV WAYNE CLAASSEN ENGINEERING AND SURVEYING INC

WAYNE CLAASSEN ENGINEERING AND SURVEYING, INC.  
P.O. BOX 898 WATERLOO, IOWA 50704-0898

PHONE: (VOICE) 319-235-6294  
(FAX) 319-235-0028

## UNITED STATES PUBLIC LAND SURVEY CORNER CERTIFICATE

Land Survey Monuments situated in Section 34, Township 87 North, Range 12 West, of the Fifth Principal Meridian, Black Hawk County, Iowa.  
Previously recorded in \_\_\_\_\_ in County Recorder's Office.  
(book, page, document number, etc.)

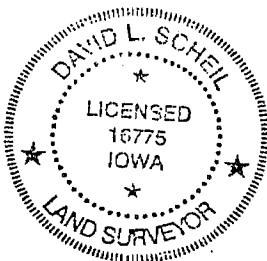
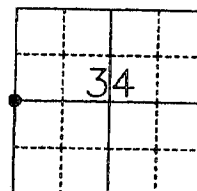
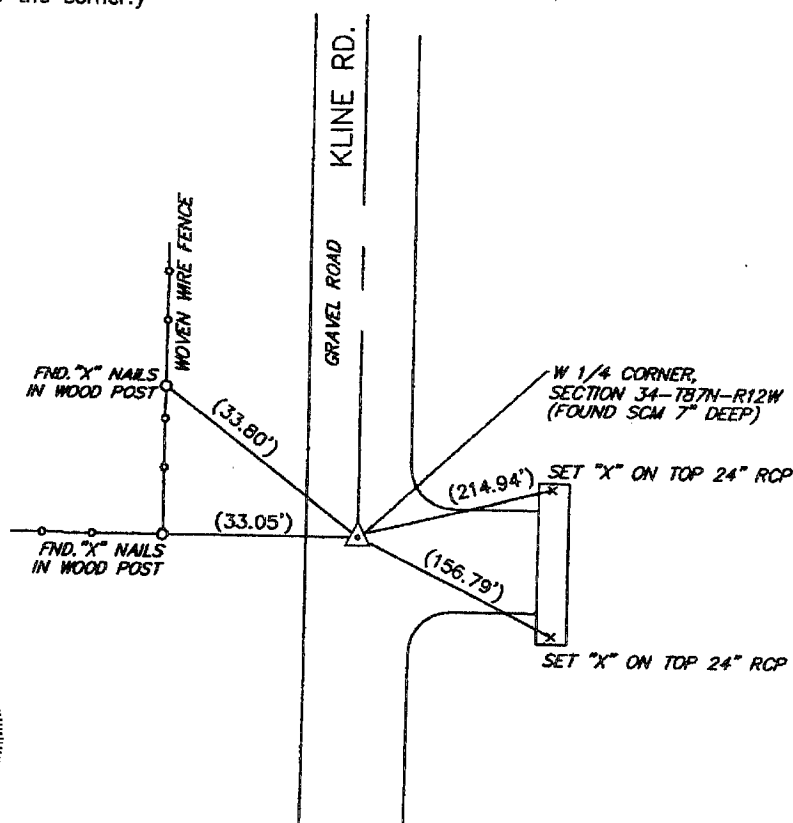
(Show reason for preparing this certificate, the evidence and detailed procedures used in establishing the corner positions and monumentation found or placed.)

Monument Description and Remarks \_\_\_\_\_

West Quarter corner. No certificate on file.

### PLAN - VIEW

(Show a minimum of three reference ties to durable physical objects, relevant monuments and physical conditions that will enable recovery of the corner.)



BK. 615, PG. 37

#### CERTIFICATION

I hereby certify that this land surveying document was prepared and the related survey work was performed by me or under my direct personal supervision and that I am a duly Licensed Land Surveyor under the laws of the State of Iowa.

Signature: David L. Scheil

David L. Scheil, L.S.

Date: APRIL 22 2005 Lic. No. 18775

My license renewal date is December 31, 2006

SEAL

#### List Corners to be Indexed

Corners	Section	Twp	Range
W 1/4 CORNER,	34	87 N	12 W