

SC ✓
Misc ✓
INDEX ✓
MARGIN ✓
PROOF ✓
COMPARE ✓

BLACK HAWK COUNTY IOWA: SS
Filed for record Mar 3, 1999, at
4:00 P.M. and recorded in Book 333
of Misc Page 508.
Recorder
Fee n/c
ENGINEER'S OFFICE

20567

County Auditor

PREPARED BY: BLACK HAWK COUNTY ENGINEERS OFFICE
316 E. FIFTH STREET, ROOM 211 WATERLOO, IOWA 50703

PH.# (319) 833-3008
FAX.# (319) 833-3139

SLSI 9-94
CERT 12-96

UNITED STATES PUBLIC LAND SURVEY CORNER CERTIFICATE OF
Land Survey Monuments situated in Section 34, Township 87 N,
Range 12 W, of the Fifth Principal Meridian, BLACK HAWK County, Iowa.
Previously recorded in Misc. Book N/A, Page N/A, in County Recorder's Office.

(Show reason for preparing this certificate, the evidence and detailed procedures used in establishing the corner positions and monumentation found or placed.)

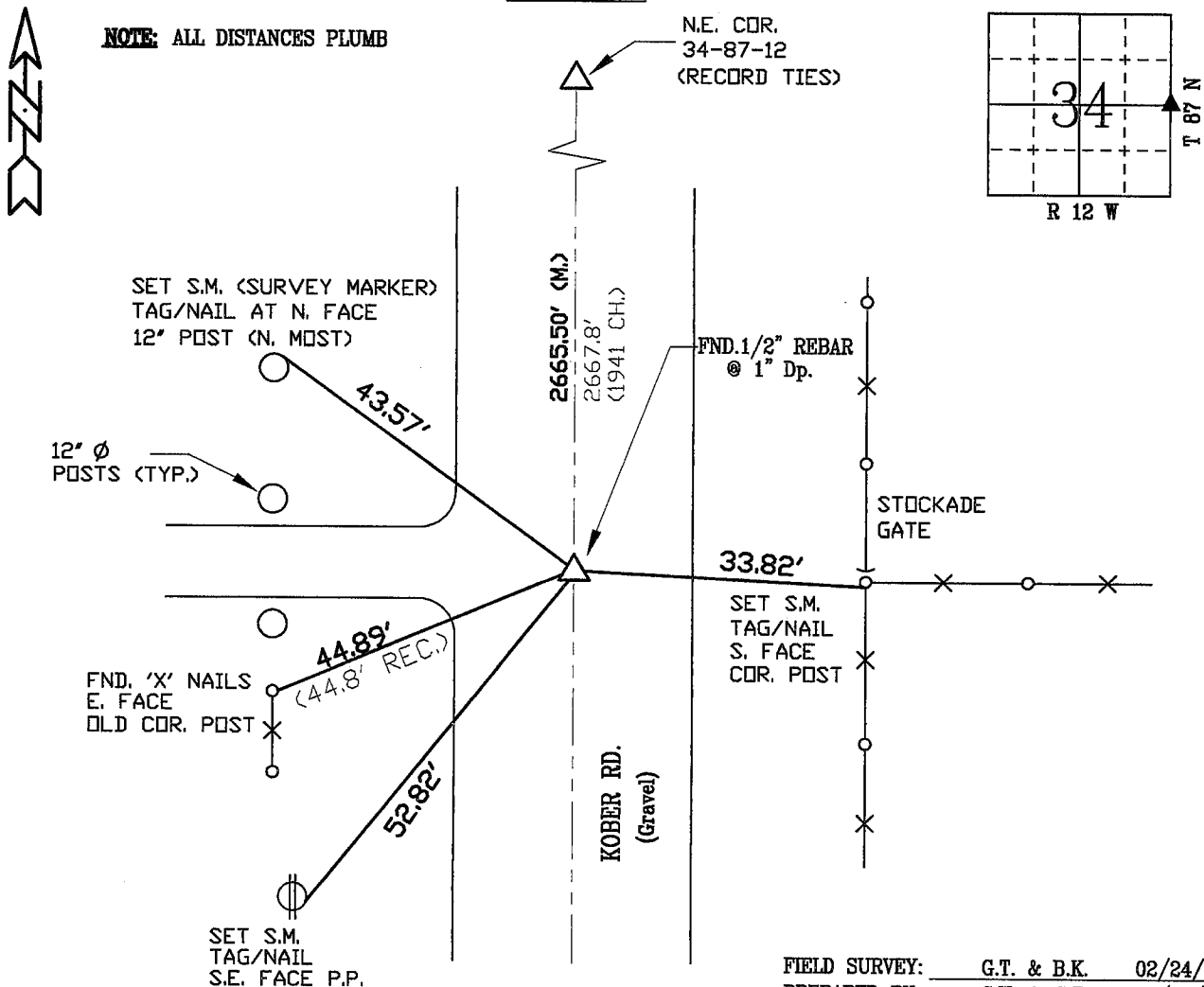
Monument Description and Remarks: FND. 1/2" REBAR LOC. 1" DP. @
CENTERLINE OF KOBER RD. ASSUMED FND. RBR. OVER C.M. (WOULD NOT
TAP DOWN) WITH REC. DEPTH @ 14" TO C.M. (DID NOT PULL AND PROBE).
CORNER LOCATED AND RE-TIED FOR BRIDGE SURVEY TO NORTH ALONG
KOBER RD.

PLAN - VIEW

(Show a minimum of three reference ties to durable physical objects, relevant monuments and physical conditions that will enable recovery of the corner.)

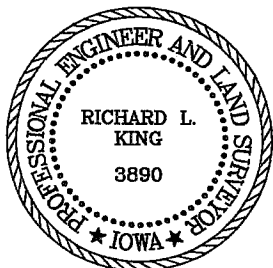
NOT TO SCALE

NOTE: ALL DISTANCES PLUMB



FIELD SURVEY: G.T. & B.K. 02/24/99
PREPARED BY: C.W. & G.T. 02/25/99

CERTIFICATION



I hereby certify that this land surveying document was prepared and the related survey work was performed by me or under my direct personal supervision and that I am a duly licensed Land Surveyor under the laws of the State of Iowa.

Richard L. King (date)
License Number 3890

My license renewal date is December 31, 1999

Pages or sheets covered by this seal:

This Land Corner Certificate Only.

LIST CORNERS TO BE INDEXED

Corner	Section	Township	Range
E. 1/4	34	87 N	12 W