

Doc ID: 004203880002 Type: GEN  
Kind: CORNER  
Recorded: 07/20/2010 at 01:29:37 PM  
Fee Amt: \$14.00 Page 1 of 2  
Black Hawk County Iowa  
JUDITH A MCCARTHY RECORDER  
File **2011-00001215**



Jeffrey P. Helland, 1107 Technology Parkway, Cedar Falls, Iowa 50613-6951, (319)-266-0161

UNITED STATES PUBLIC LAND SURVEY CORNER CERTIFICATE  
OF

LAND SURVEY MONUMENTS SITUATED IN SECTION NO. 33, TOWNSHIP NO. 87 NORTH, RANGE  
NO. 12 WEST OF THE FIFTH PRINCIPAL MERIDIAN, BLACK HAWK COUNTY, IOWA.  
PREVIOUSLY RECORDED IN FEE BOOK #2005 25406.

(SHOW REASON FOR PREPARING THIS CERTIFICATE, THE EVIDENCE AND DETAILED PROCEDURES USED IN ESTABLISHING THE  
CORNER POSITIONS AND MONUMENTATION FOUND OR PLACED.)

MONUMENT DESCRIPTION AND REMARKS:

USPLSCC FEE BOOK #2005 25406 REFERENCE TIES HAVE BEEN UPDATED. SURVEY COMPLETED IN THE NE FRL 1/4 OF SEC.  
4-T86N-R12W.

SE CORNER: USPLS ORIGINALS NOTES CALLS FOR *[INTERSECT NORTH BOUNDARY 32 LKS WEST OF POST AND SET POST IN  
MOUND CORNER TO SECTIONS 3 & 4 PIT 5 LKS SOUTH OCT. 31st]*. BENTON COUNTY AUDITOR'S SURVEYOR RECORD BOOK A  
PAGE 137 DATED 6/5/1855 IS A SURVEY OF SEC. 3-T86N-R12W AND MAKES NO MENTION ON PLAT OF CLOSING CORNERS  
BEING ON THE NORTH LINE OF SECTION 3-T86N-R12W. BENTON COUNTY AUDITOR'S SURVEYOR RECORD BOOK A PAGE 391  
DATED 10/30/1871 CALLS FOR *[OLD MOUND]*, NO MENTION ON PLAT OF CLOSING CORNERS BEING ON THE NORTH LINE OF  
SECTION 4-T86N-R12W. BLACK HAWK COUNTY AUDITOR'S SURVEY RECORD BOOK 1 PAGE 467 DATED 10/21/1870 IS A  
SURVEY OF THE N 1/2 OF SEC. 33-T87N-R12W UTILIZING A STAKE IN OLD MOUND AT THE S 1/4 CORNER OF SEC.  
3-T87N-R12W, NO MENTION OF CLOSING CORNERS. NO BENTON COUNTY ENGINEER REFERENCE TIES AVAILABLE. BLACK  
HAWK COUNTY ENGINEER REFERENCE CARD (NO DATE) CALLS FOR *[FOUND LIMESTONE SET IRON BAR N. SIDE STONE]*,  
ALSO *[FOUND LIMESTONE 7"x9"x33" IRON BAR 1/2"x23" C/M SET 12" DEEP]*. BLACK HAWK COUNTY ENGINEER REFERENCE  
TIES (WPA) DATED 11/21/1939 CALLS FOR *[AT LOCATION INDICATED BY RANDOM LINE DUG HOLE 5 FT. SQUARE x 18" DEEP,  
FOUND LIMESTONE 33"x7"x9" AND IRON BAR 1/2"x23", LOWERED ALL EVIDENCE IN PLACE AND SET CM ON TOP WITH CAP  
MARKED: 33|34 SET TOP OF CM 30" DEEP]*.  
4|3

BENTON COUNTY AUDITOR'S SURVEYOR RECORD BOOK A PAGE 467 DATED 6/4/1875 UTILIZES THE NW CORNER, N 1/4  
CORNER AND NE CORNER OF OF SEC. 2-T86N-R12W AND MAKES NO MENTION ON PLAT OF CLOSING CORNERS BEING ON  
THE NORTH LINE OF SECTION 2-T86N-R12W. BLACK HAWK COUNTY WPA NOTES DATED 11/21/1939 FOR THE SE CORNER  
OF SEC. 34-T87N-R12W INDICATED THE R.O.W. FENCES (BENTON COUNTY R.O.W. FENCES NARROWER THAN BLACK HAWK  
COUNTY R.O.W. FENCES) AND ROAD RUN STRAIGHT THROUGH FROM BENTON COUNTY TO BLACK HAWK COUNTY. BLACK  
HAWK COUNTY WPA NOTES DATED 11/21/1939 FOR THE SE CORNER OF SEC. 33-T87N-R12W INDICATED THE R.O.W. FENCES  
AND ROAD RUN STRAIGHT THROUGH FROM BENTON COUNTY TO BLACK HAWK COUNTY.

AFTER ANALYSIS OF THE BENTON COUNTY AND BLACK HAWK COUNTY AUDITOR'S SURVEYS, WPA NOTES, RECENT SURVEY  
BY DAVID L. SCHEIL #16775 OF SEC. 34-T87N-R12W IN BLACK HAWK COUNTY DATED 4/22/2005 IN FEE BOOK #2005  
24575 AND MEASURED DISTANCE TO FENCE WEST OF CORNER, IT APPEARS THE LIMESTONE FOUND BY THE WPA FOR  
BLACK HAWK COUNTY ACTUALLY FOUND THE LIMESTONE MARKING THE NE CORNER OF SEC. 4-T86N-R12W. IT ALSO  
APPEARS BASED UPON SAID EVIDENCE AND 1930's AERIAL PHOTOS THAT BLACK HAWK COUNTY AND BENTON COUNTY  
UTILIZED THE SAME CORNER LOCATION FOR THE NE CORNER OF SEC. 4-T86N-R12W AND THE NE CORNER OF SEC.  
3-T86N-R12W AS THE SE CORNER OF SEC. 33-T87N-R12W AND THE SE CORNER OF SEC. 34-T87N-R12W RESPECTIVELY.

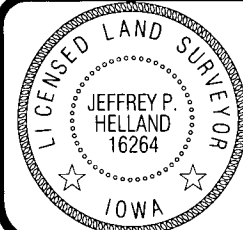
USPLSCC FEE BOOK #2005 25406 DATED 4/27/2005 CALLS FOR *[FOUND 1/2" REBAR 3" DEEP ABOVE SCM 36" DEEP]*.  
FOUND NO. 4 REBAR CORRESPONDING TO USPLSCC FEE BOOK #2005 25406, UTILIZED SAID NO. 4 REBAR AS THE NE  
CORNER OF SEC. 4-T86N-R12W FOR SURVEY IN THE NEFRL 1/4 OF SEC. 4-T87N-R12W. THIS USPLSCC IS ALSO  
RECOGNIZING SAID NO. 4 REBAR AS BEING THE SE CORNER OF SEC. 33-T87N-R12W AND AS A RESULT THE NE CORNER OF  
SEC. 4-T86N-R12W AND SE CORNER OF SEC. 33-T87N-R12W ARE ONE AND THE SAME.



HELLAND ENGINEERING & SURVEYING, LTD.  
1107 Technology Parkway  
Cedar Falls, Iowa 50613-6951  
(319)-266-0161

SHEET 1 OF 2

SHINER = 8D NAIL & 1 5/16"Ø METAL SHINER  
BRASS TAG = 8D NAIL & 13/16"Ø BRASS TAG  
OPC = PLASTIC CAP (O=ORANGE, R=RED, Y=YELLOW)  
(00) RECORDED AS FILE NAME: 10-183C2.DWG



I hereby certify that this land surveying document was prepared  
and the related survey work was performed by me or under my  
direct personal supervision and that I am a duly licensed Land  
Surveyor under the laws of the State of Iowa.  
*Jeffrey P. Helland 7/13/10*  
Jeffrey P. Helland  
License Number 16264  
My license renewal date is December 31, 2011.  
All pages or sheets are covered by this seal except:

LIST CORNERS TO BE INDEXED			
CORNER	SECTION	TOWNSHIP	RANGE
SE CORNER	33	87N	12W
SW CORNER	34	87N	12W

✓ 28.00 FS 14.00

Rec. 2

Jeffrey P. Helland, 1107 Technology Parkway, Cedar Falls, Iowa 50613-6951, (319)-266-0161

UNITED STATES PUBLIC LAND SURVEY CORNER CERTIFICATE  
OF

LAND SURVEY MONUMENTS SITUATED IN SECTION NO. 33, TOWNSHIP NO. 87 NORTH, RANGE  
NO. 12 WEST OF THE FIFTH PRINCIPAL MERIDIAN, BLACK HAWK COUNTY, IOWA.  
PREVIOUSLY RECORDED IN FEE BOOK #2005 25406.

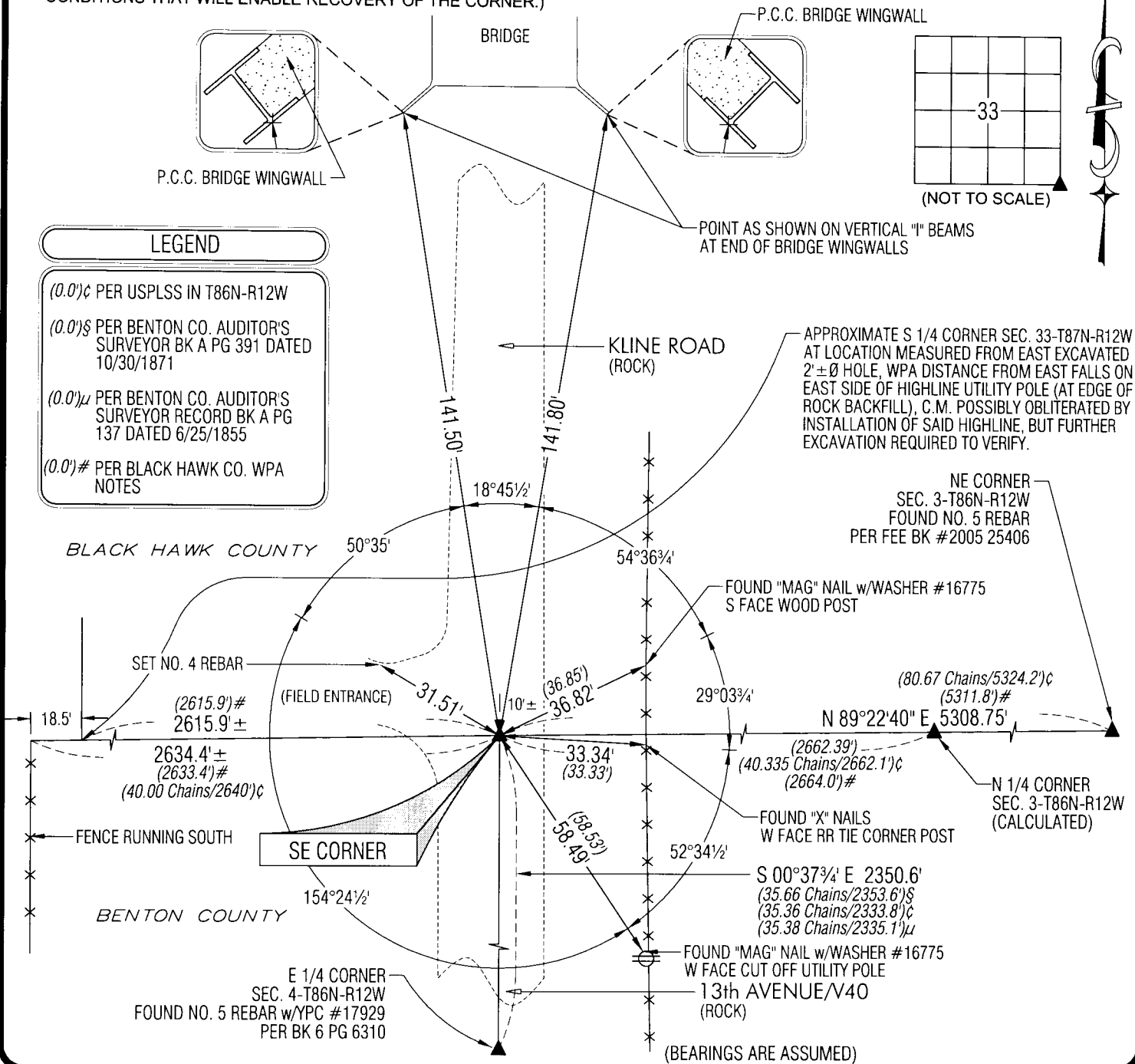
(SHOW REASON FOR PREPARING THIS CERTIFICATE, THE EVIDENCE AND DETAILED PROCEDURES USED IN ESTABLISHING THE  
CORNER POSITIONS AND MONUMENTATION FOUND OR PLACED.)

MONUMENT DESCRIPTION AND REMARKS:

SE CORNER: SEE SHEET 1 OF 2

PLAN VIEW

(SHOW A MINIMUM OF THREE REFERENCE TIES TO DURABLE PHYSICAL OBJECTS, RELEVANT MONUMENTS AND PHYSICAL  
CONDITIONS THAT WILL ENABLE RECOVERY OF THE CORNER.)





HELLAND ENGINEERING & SURVEYING, LTD.

1107 Technology Parkway  
Cedar Falls, Iowa 50613-6951  
(319)-266-0161

SHEET 2 OF 2

SHINER = 8D NAIL & 1 5/16"Ø METAL SHINER  
BRASS TAG = 8D NAIL & 13/16"Ø BRASS TAG  
OPC = PLASTIC CAP (O=ORANGE, R=RED, Y=YELLOW)  
(00') RECORDED AS FILE NAME: 10-183C2.DWG

LIST CORNERS TO BE INDEXED			
CORNER	SECTION	TOWNSHIP	RANGE
SE CORNER	33	87N	12W
SW CORNER	34	87N	12W