

Jeffrey P. Helland, 1107 Technology Parkway, Cedar Falls, Iowa 50613-6951, (319)-266-0161

UNITED STATES PUBLIC LAND SURVEY CORNER CERTIFICATE
OFLAND SURVEY MONUMENTS SITUATED IN SECTION NO. 33, TOWNSHIP NO. 87 NORTH, RANGE
NO. 12 WEST OF THE FIFTH PRINCIPAL MERIDIAN, BLACK HAWK COUNTY, IOWA.
PREVIOUSLY RECORDED IN USPLSCC BK 332 PG 493(SHOW REASON FOR PREPARING THIS CERTIFICATE, THE EVIDENCE AND DETAILED PROCEDURES USED IN ESTABLISHING THE
CORNER POSITIONS AND MONUMENTATION FOUND OR PLACED.)

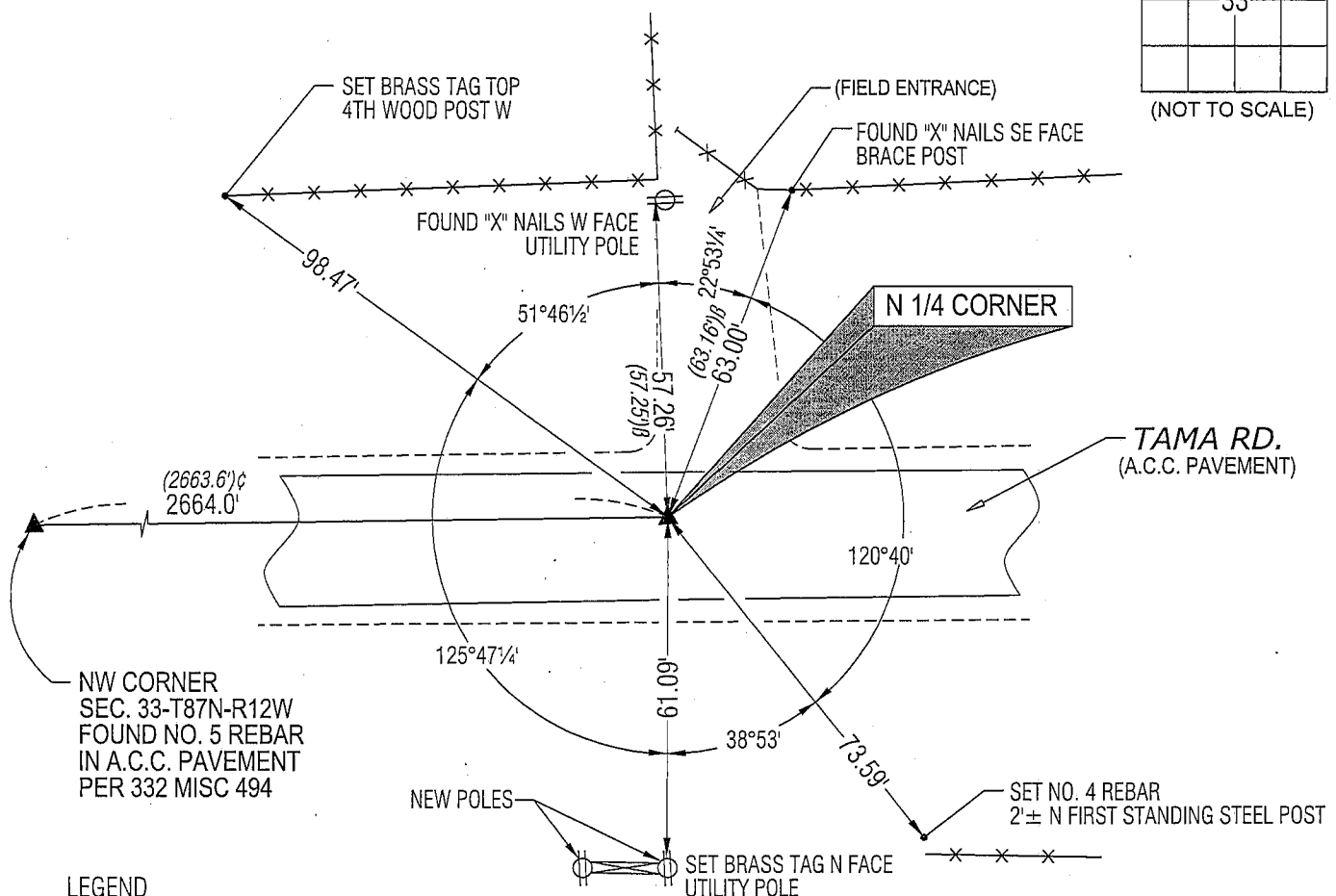
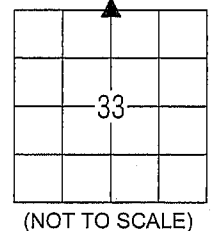
MONUMENT DESCRIPTION AND REMARKS:

USPLSCC BK 332 PG 493 REFERENCE TIES HAVE CHANGED. SURVEY COMPLETED IN THE NW 1/4 OF SEC. 33-T87N-R12W.

→ **N 1/4 CORNER:** AUDITOR'S SURVEY BK 1 PG 467 (UNDATED) CALLS FOR [STONE]. NO BLACK HAWK COUNTY ENGINEER
REFERENCE TIES AVAILABLE. W.P.A. NOTES DATED 8/29/1941 CALL FOR [C.M.]. USPLSCC BK 332 PG 493 DATED 12/5/1988
CALLS FOR [FOUND RESET 5/8" REBAR FLUSH W/A.C.C. SURF.....]. USPLSCC ALSO STATES THAT CORNER IS 8.2' SOUTH OF
NORTH. EDGE A.C.C. PAVEMENT. FOUND NO. 5 REBAR 8.2' SOUTH OF NORTH EDGE OF PAVEMENT. TWO REMAINING TIES
CORRESPOND WITHIN REASON. UTILIZED SAID REBAR AS CORNER.

(SHOW A MINIMUM OF THREE REFERENCE TIES TO DURABLE PHYSICAL OBJECTS, RELEVANT MONUMENTS AND PHYSICAL
CONDITIONS THAT WILL ENABLE RECOVERY OF THE CORNER.)

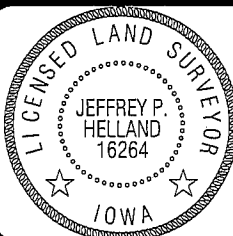
PLAN VIEW



LEGEND

(0.0')C PER W.P.A. NOTES DATED 8/29/1941

(0.0')B PER USPLSCC BK 332 PG 493 DATED 12/5/1998

HELLAND ENGINEERING & SURVEYING, LTD.
1107 Technology Parkway
Cedar Falls, Iowa 50613-6951
(319)-266-0161SHINER = 8D NAIL & 1 5/16"Ø METAL SHINER
BRASS TAG = 13/16"Ø BRASS TAG
OPC = PLASTIC CAP (O=ORANGE, R=RED, Y=YELLOW)
(00') RECORDED AS FILE NAME: 08-189C3.DWGI hereby certify that this land surveying document was prepared
and the related survey work was performed by me or under my
direct personal supervision and that I am a duly licensed Land
Surveyor under the laws of the State of Iowa.Jeffrey P. Helland 6/5/08
Jeffrey P. Helland
License Number 16264
My license renewal date is December 31, 2009.
All pages or sheets are covered by this seal except:

LIST CORNERS TO BE INDEXED

CORNER	SECTION	TOWNSHIP	RANGE
N 1/4 CORNER	33	87N	12W
S 1/4 CORNER	28	87N	12W

Rec