

INDEX ²⁸
MARGIN
PROOF ^{aw}
COMPARE

Filed for record June 8, 1999 at 4:00 P.M. and recorded in Book 334
of Misc at page 707.
Catharine A. Less Recorder
FEE 1-5.00/
Ryken Engineering
711 Park Ave
Ackley IA 50601

Harlan K. Schuck, LS, 711 Park Avenue, Ackley, IA 50601 Ph 515-847-3273

UNITED STATES PUBLIC LAND SURVEY CORNER CERTIFICATE

OF

Land Survey Monuments situated in Section 32, Township 87, Range 12, of the Fifth Principal Meridian, Black Hawk County, Iowa.
Previously recorded in Not Applicable in County Recorder's Office.
(book, page, document number, etc.)

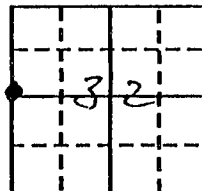
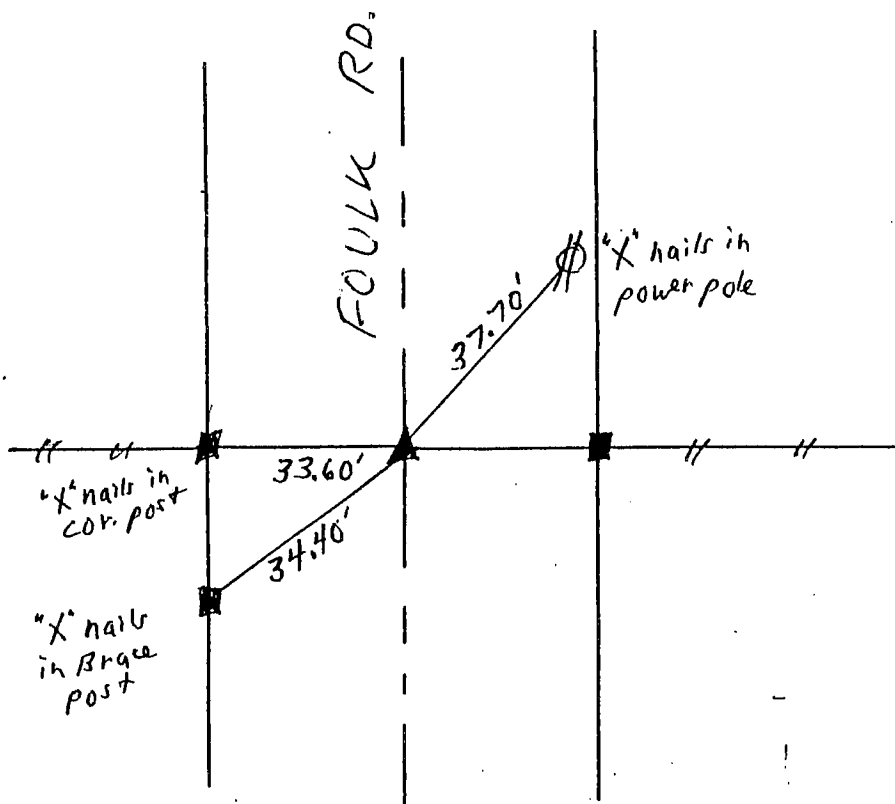
(Show reason for preparing this certificate, the evidence and detailed procedures used in establishing the corner positions and monumentation found or placed.)

Monument Description and Remarks:

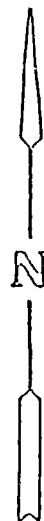
W 1/4 Cor. Sec. 32 - Found concrete monument with brass cap
& road on line with fences east-west.

PLAN - VIEW

(Show a minimum of three reference ties to durable physical objects, relevant monuments and physical conditions that will enable recovery of the corner.)



W 1/4 Cor.
Sec 32-87-12
(Found concrete
Mon. w/brass cap)



I hereby certify that the survey work was completed and this land surveying document was prepared by me or under my direct personal supervision and that I am a duly licensed land surveyor under the laws of the state of Iowa

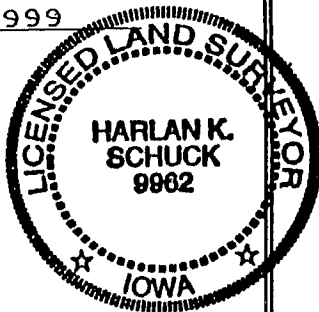
Signature: Harlan K. Schuck

Name typed or printed: Harlan K. Schuck

Date: 5/5/99 Lic.No. 9962

My license renewal date is December 31, 1999

SEAL



Corners	List Corners to be Indexed	Section	Twp	Range
W 1/4	32	-	87	- 12

BOOK 334 PAGE 707