

ENV TEKIPPE ENGINEERING, P.C.
1919 210TH STREET
PO BOX 357
MANCHESTER, IA 52057

IX
Poll
Z

Document Number: 2008012185
Date: Dec 11, 2007 4:30:00 pm
Aud Fee: 0.00 Rec Fee: 5.00
Trans Tax: 0.00 Rec Management Fee: 1.00
E-Com Fee: 1.00 Non-Standard Page Fee: 0.00
Filed for record in Black Hawk County, Iowa
Judith A. McCarthy, County Recorder

COPY

Prepared by: TeKIPPE ENGINEERING, P.C., 1919 - 210th Street, P.O. Box 357, Manchester, Iowa 52057 Ph. (563)927-2060

UNITED STATES PUBLIC LAND SURVEY CORNER CERTIFICATE

OF

Land Survey Monuments situated in Section 32, Township 87 North, Range 12 West of the Fifth Principal Meridian, Black Hawk County, Iowa.

Previously recorded in none in County Recorder's Office.
(book, page, document number, etc.)

(Show reason for preparing this certificate, the evidence and detailed procedures used in establishing the corner positions and monumentation found or placed.)

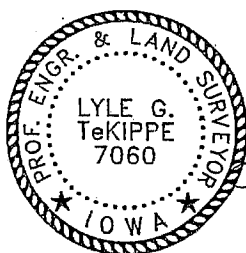
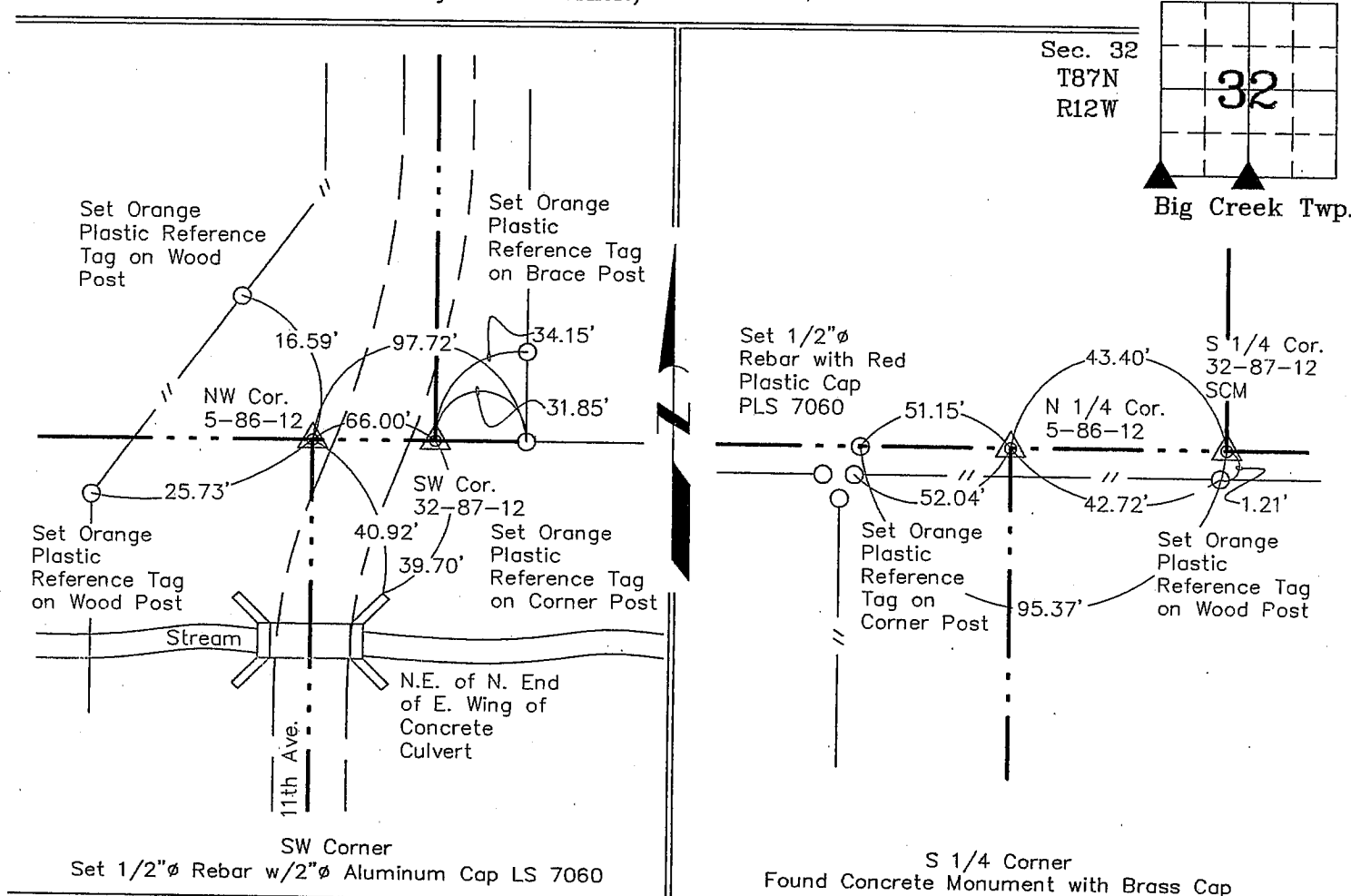
Monument Description and Remarks: **SW Corner of Section 32, T87N, R12W:**

Set 1/2" ϕ Rebar with Aluminum Cap PLS 7060, reestablished corner with existing ties from WPA notes in the Black Hawk County Engineer's Office.

S 1/4 Corner of Section 32, T87N, R12W: Found Concrete Monument with Brass Cap, (Set 1/2" ϕ Rebar with Aluminum Cap PLS 7060 0.47' South of Concrete Monument), from county WPA ties on file in the Black Hawk County Engineer's Office.

PLAN - VIEW

(Show a minimum of three reference ties to durable physical objects, relevant monuments and physical conditions that will enable recovery of the corner.)



I hereby certify that this land surveying document was prepared and the related survey work was performed by me or under my direct personal supervision and that I am a duly licensed Land Surveyor under the laws of the State of Iowa.

Lyle G. TeKippe
License number 7060

My license renewal date is December 31, 2008.
Sheets covered by this seal: Individual

12-10-07
Date

List Corners to be Indexed			
Corners	Section	Twp.	Range
SW	32	87	12
S 1/4	32	87	12

Project Number 07668.1S
FB. Benton Co. No. 1 PG. 6-7