

Paul H. Helland, 1107 Technology Parkway, Cedar Falls, Iowa 50613-6951, (319)-266-0161

UNITED STATES PUBLIC LAND SURVEY CORNER CERTIFICATE
OF

LAND SURVEY MONUMENTS SITUATED IN SECTION NO. 32, TOWNSHIP NO. 87 NORTH, RANGE NO. 12 WEST OF THE FIFTH PRINCIPAL MERIDIAN, BLACK HAWK COUNTY, IOWA.
PREVIOUSLY RECORDED IN N/A

(SHOW REASON FOR PREPARING THIS CERTIFICATE, THE EVIDENCE AND DETAILED PROCEDURES USED IN ESTABLISHING THE CORNER POSITIONS AND MONUMENTATION FOUND OR PLACED.)

MONUMENT DESCRIPTION AND REMARKS:

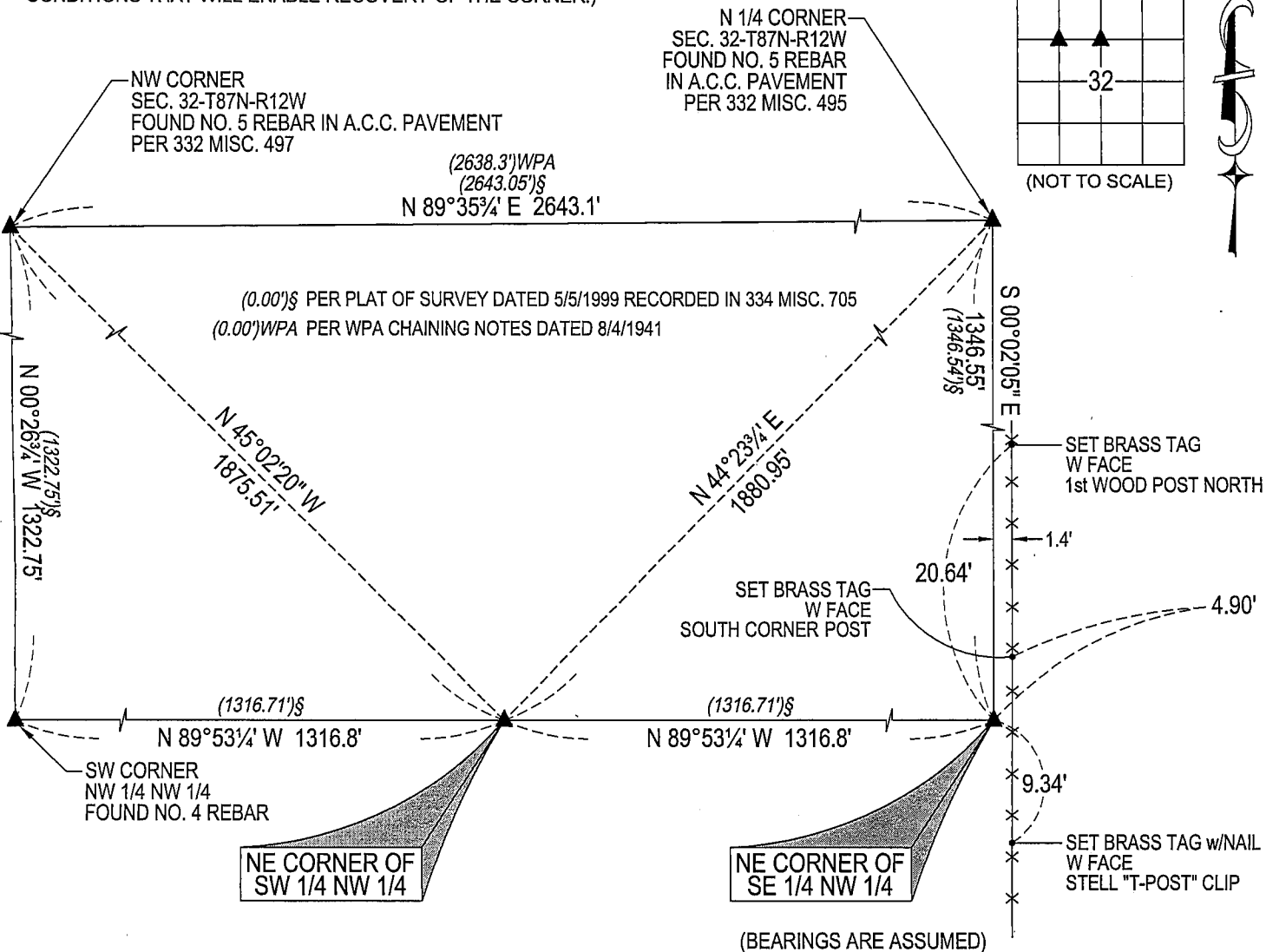
NO USPLSCC ON FILE. SURVEY COMPLETED IN THE NE 1/4 OF SEC. 32-T87N-R12W.

NE CORNER SE 1/4 NW 1/4: NO BLACK HAWK COUNTY ENGINEER TIES AVAILABLE. PLAT OF SURVEY BY HARLAN K. SCHUCK #9962 DATED 5/5/1999 RECORDED IN 334 MISC. 705 CALLS FOR [1/2" IRON ROD W/CAP] SHOWN ON PLAT TO BE SET AT THE MIDPOINT OF A LINE BETWEEN THE N 1/4 CORNER AND THE CENTER (COR. POST). PLAT OF SURVEY BY PAUL H. HELLAND #6505 DATED 7/16/1999 RECORDED IN 335 MISC. 75 CALLS FOR [FOUND NO. 4 REBAR w/YELLOW CAP #9962]. FOUND NO. 4 REBAR w/YPC #9962.

NE CORNER SW 1/4 NW 1/4: NO BLACK HAWK COUNTY ENGINEER TIES AVAILABLE. SET NO. 4 REBAR w/OPC #6505 AT THE MIDPOINT OF A LINE BETWEEN THE NW CORNER SW 1/4 NW 1/4 AND THE NE CORNER SE 1/4 NW 1/4 CORRESPONDING TO QUARTER BREAKDOWN PER PLAT OF SURVEY BY HARLAN K. SCHUCK #9962 DATED 5/5/1999 RECORDED IN 334 MISC. 705. CORNER IS BURIED 12" IN CULTIVATED FIELD, NO GERMANE OBJECTS TO REFERENCE.

PLAN VIEW

(SHOW A MINIMUM OF THREE REFERENCE TIES TO DURABLE PHYSICAL OBJECTS, RELEVANT MONUMENTS AND PHYSICAL CONDITIONS THAT WILL ENABLE RECOVERY OF THE CORNER.)



HES

HELLAND ENGINEERING & SURVEYING, LTD.
1107 Technology Parkway
Cedar Falls, Iowa 50613-6951
(319)-266-0161

SHINER = 8D NAIL & 1 5/16"Ø METAL SHINER
BRASS TAG = 13/16"Ø BRASS TAG
OPC = PLASTIC CAP (O=ORANGE, R=RED, Y=YELLOW)
(00') RECORDED AS FILE NAME: 07-234C3.DWG

PROFESSIONAL ENGINEER & LAND SURVEYOR

PAUL H. HELLAND
6505

IOWA

I hereby certify that this land surveying document was prepared and the related survey work was performed by me or under my direct personal supervision and that I am a duly licensed Land Surveyor under the laws of the State of Iowa.

Paul H. Helland

License Number 6505

My license renewal date is December 31, 2007.

All pages or sheets are covered by this seal except:

LIST CORNERS TO BE INDEXED

CORNER	SECTION	TOWNSHIP	RANGE
NE CORNER SE 1/4 NW 1/4	32	87N	12W
NE CORNER SW 1/4 NW 1/4	32	87N	12W

Rec