

Reserved for County Recorder's use.



Doc ID: 011982800001 Type: GEN
Recorded: 07/28/2023 at 11:11:36 AM
Fee Amt: \$7.00 Page 1 of 1
Black Hawk County Iowa
SANDIE L. SMITH RECORDER

File 2024-00001313

Kyle J. Helland, 6109 Chancellor Drive, Cedar Falls, Iowa 50613-6916, (319)-266-0161

UNITED STATES PUBLIC LAND SURVEY CORNER CERTIFICATE
OF

LAND SURVEY MONUMENTS SITUATED IN SECTION NO. 32, TOWNSHIP NO. 87 NORTH, RANGE
NO. 12 WEST OF THE FIFTH PRINCIPAL MERIDIAN, BLACK HAWK COUNTY, IOWA.
PREVIOUSLY RECORDED IN DOC. #2008007329

(SHOW REASON FOR PREPARING THIS CERTIFICATE, THE EVIDENCE AND DETAILED PROCEDURES USED IN ESTABLISHING THE
CORNER POSITIONS AND MONUMENTATION FOUND OR PLACED.)

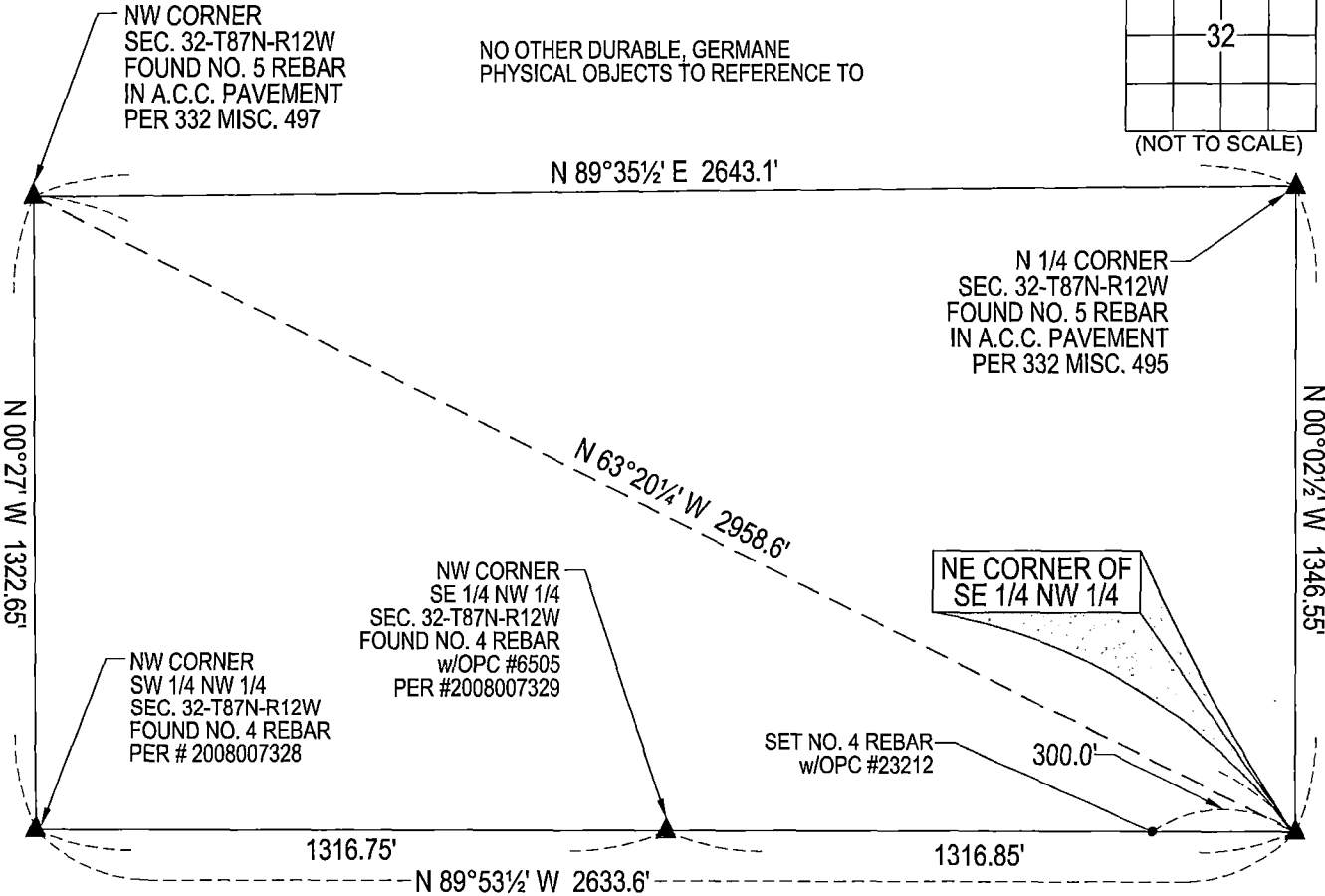
MONUMENT DESCRIPTION AND REMARKS:

MONUMENTATION HAS CHANGED AND ALL TIES ARE REMOVED. SURVEY COMPLETED IN THE NW 1/4 OF SEC.
32-T87N-R12W.

NE CORNER SE 1/4 OF THE NW 1/4: USPLSCC DOC. #2008007329 DATED 10/01/2007 CALLS FOR [NO BLACK HAWK COUNTY
ENGINEER TIES AVAILABLE. PLAT OF SURVEY BY HARLAN K. SCHUCK #9962 DATED 5/5/1999 RECORDED IN 334 MISC. 705
CALLS FOR [1/2" IRON ROD W/CAP] SHOWN ON PLAT TO BE SET AT THE MIDPOINT OF A LINE BETWEEN THE N 1/4 CORNER
AND THE CENTER (COR. POST). PLAT OF SURVEY BY PAUL H. HELLAND #6505 DATED 7/16/1999 RECORDED IN 335 MISC. 75
CALLS FOR [FOUND NO. 4 REBAR w/YELLOW CAP #9962]. SEARCHED AREA WITH MAGNETIC DETECTOR FOUND NO. 4
REBAR w/ILLEGIBLE YPC AND ALL TIES TO GERMANE OBJECTS REMOVED. SAID FOUND NO. 4 REBAR FITS WITHIN REASON
OF OTHER GOVERNMENT CORNERS. THEREFORE USED SAID NO. 4 REBAR AS CORNER.

PLAN VIEW

(SHOW A MINIMUM OF THREE REFERENCE TIES TO DURABLE PHYSICAL OBJECTS, RELEVANT MONUMENTS AND PHYSICAL
CONDITIONS THAT WILL ENABLE RECOVERY OF THE CORNER.)



SEE ASSOCIATED PLAT OF SURVEY FOR
"RECORDED AS" INFORMATION

(BEARINGS ARE ASSUMED)



HELLAND ENGINEERING & SURVEYING, LTD.
6109 Chancellor Drive
Cedar Falls, Iowa 50613-6916
(319)-266-0161

BRASS TAG = 4d. NAIL & 13/16"Ø BRASS TAG DRAWN BY: CDR
SHINER = 1"Ø STEEL SHINER w/MASONRY NAIL
OPC = PLASTIC CAP (O=ORANGE, R=RED, Y=YELLOW)
(00') RECORDED AS FILE NAME: 23-161-62.DWG



I hereby certify that this land surveying document was prepared
and the related survey work was performed by me or under my
direct personal supervision and that I am a duly licensed
Professional Land Surveyor under the laws of the State of Iowa.

Kyle J. Helland
License Number 23212
My license renewal date is December 31, 2023.
All pages or sheets are covered by this seal except:

LIST CORNERS TO BE INDEXED

CORNER	SECTION	TOWNSHIP	RANGE
NE COR. SE 1/4 NW 1/4	32	87N	12W
SE COR. NE 1/4 NW 1/4	32	87N	12W
SW COR. NW 1/4 NE 1/4	32	87N	12W
NW COR. SW 1/4 NE 1/4	32	87N	12W