

Paul H. Helland, 1107 Technology Parkway, Cedar Falls, Iowa 50613-6951, (319)-266-0161

UNITED STATES PUBLIC LAND SURVEY CORNER CERTIFICATE
OF

LAND SURVEY MONUMENTS SITUATED IN SECTION NO. 32, TOWNSHIP NO. 87 NORTH, RANGE NO. 12 WEST OF THE FIFTH PRINCIPAL MERIDIAN, BLACK HAWK COUNTY, IOWA.
PREVIOUSLY RECORDED IN N/A

(SHOW REASON FOR PREPARING THIS CERTIFICATE, THE EVIDENCE AND DETAILED PROCEDURES USED IN ESTABLISHING THE CORNER POSITIONS AND MONUMENTATION FOUND OR PLACED.)

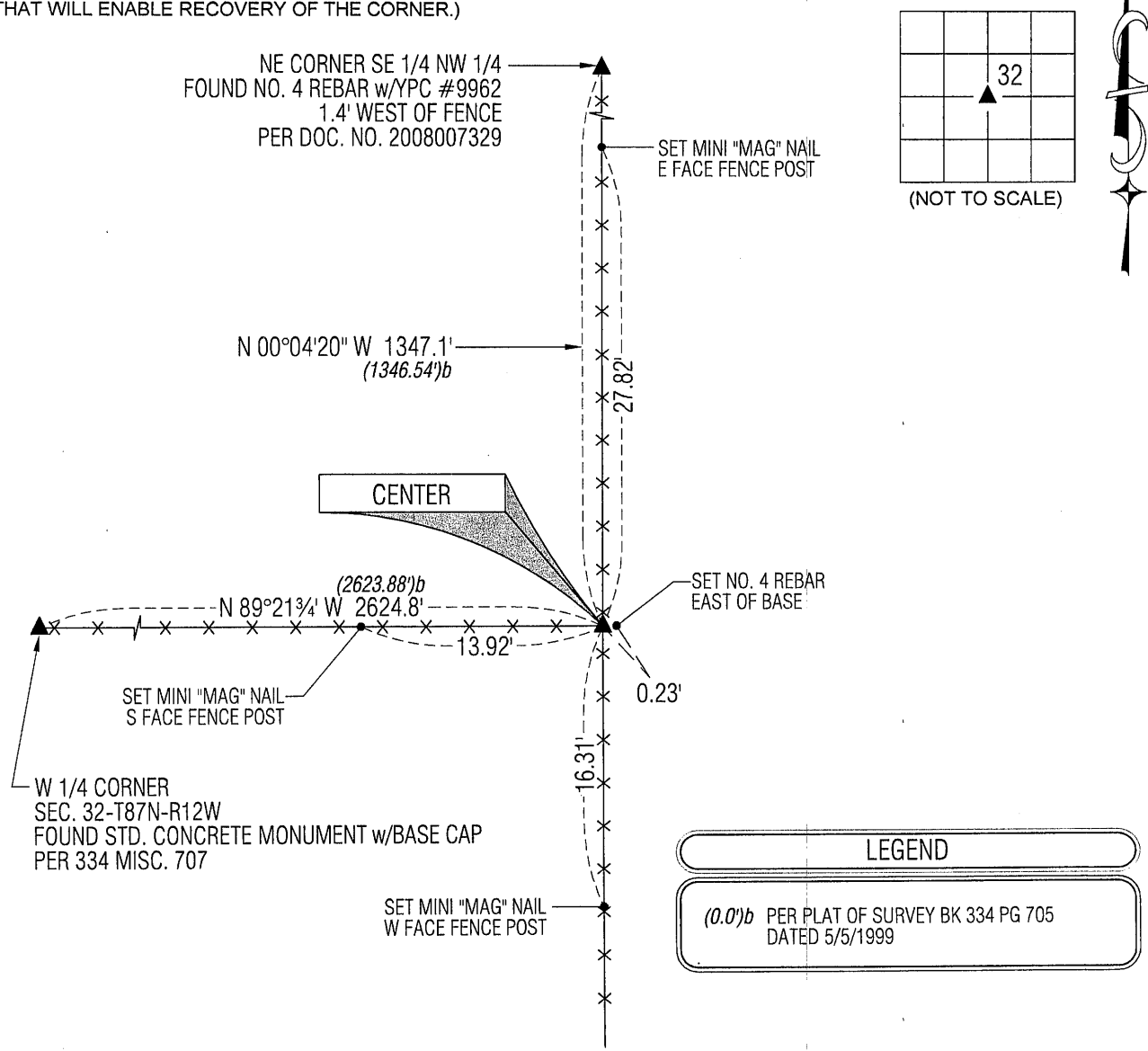
MONUMENT DESCRIPTION AND REMARKS:

NO USPLSCC ON FILE. SURVEY COMPLETED IN THE NW 1/4 OF SEC. 32-T87N-R12W.

CENTER: PLAT OF SURVEY BOOK 334 PAGE 705 DATED 5/5/1999 CALLS FOR [COR. POST]. FOUND 4 PIECES OF ANGLE IRON BOLTED TOGETHER, UTILIZED CENTER @ BASE, SET NO. 4 REBAR S 89°21'34" E 0.23' OF SAID ANGLE IRON BASE AS A WITNESS MONUMENT.

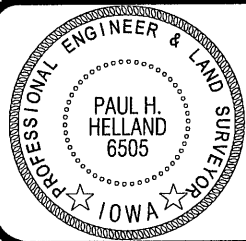
PLAN VIEW

(SHOW A MINIMUM OF THREE REFERENCE TIES TO DURABLE PHYSICAL OBJECTS, RELEVANT MONUMENTS AND PHYSICAL CONDITIONS THAT WILL ENABLE RECOVERY OF THE CORNER.)



HES HELLAND ENGINEERING & SURVEYING, LTD.
1107 Technology Parkway
Cedar Falls, Iowa 50613-6951
(319)-266-0161

SHINER = 8D NAIL & 1 5/16"Ø METAL SHINER
BRASS TAG = 8D NAIL & 13/16"Ø BRASS TAG
OPC = PLASTIC CAP (O=ORANGE, R=RED, Y=YELLOW)
(00') RECORDED AS FILE NAME: 12-264-29.DWG



I hereby certify that this land surveying document was prepared and the related survey work was performed by me or under my direct personal supervision and that I am a duly licensed Land Surveyor under the laws of the State of Iowa.
Paul H. Helland 12/29/13
Paul H. Helland
License Number 6505
My license renewal date is December 31, 2013.
All pages or sheets are covered by this seal except:

LIST CORNERS TO BE INDEXED			
CORNER	SECTION	TOWNSHIP	RANGE
CENTER	32	87N	12W