

ENV TEKIPPE ENGINEERING P.C.
1919 210TH STREET
PO BOX 357
MANCHESTER, IA 52057

I
P
Z

Document Number: 2008012187
Date: Dec 11, 2007 4:30:00 pm
Aud Fee: 0.00 Rec Fee: 5.00
Trans Tax: 0.00 Rec Management Fee: 1.00
E-Com Fee: 1.00 Non-Standard Page Fee: 0.00
Filed for record in Black Hawk County, Iowa
Judith A. McCarthy, County Recorder

COPY

Prepared by: TeKIPPE ENGINEERING, P.C., 1919 - 210th Street, P.O. Box 357, Manchester, Iowa 52057 Ph. (563)927-2060

UNITED STATES PUBLIC LAND SURVEY CORNER CERTIFICATE

OF

Land Survey Monuments situated in Section 31, Township 87 North, Range 12 West of the Fifth Principal Meridian, Black Hawk County, Iowa.

Previously recorded in none in County Recorder's Office.
(book, page, document number, etc.)

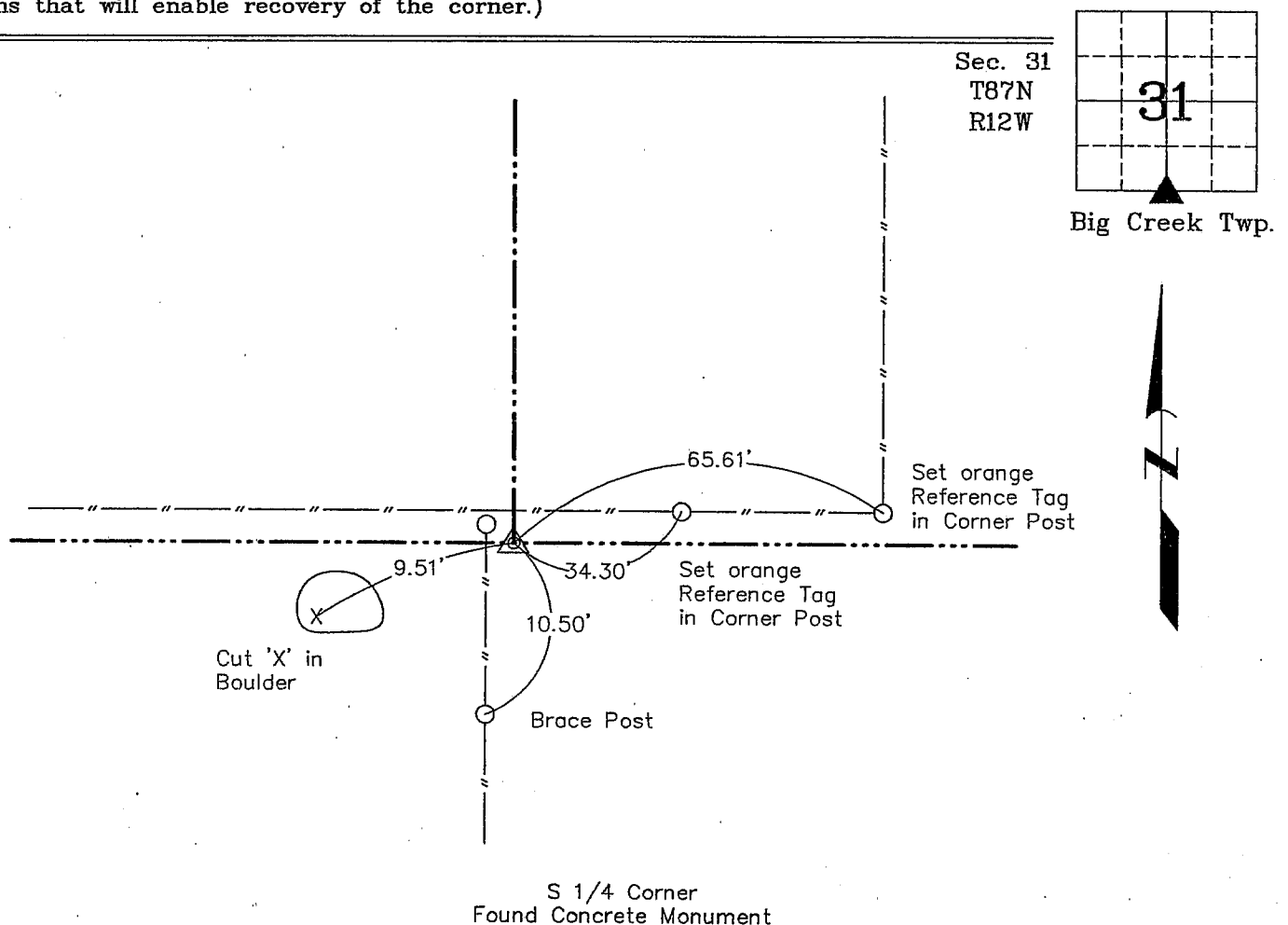
(Show reason for preparing this certificate, the evidence and detailed procedures used in establishing the corner positions and monumentation found or placed.)

Monument Description and Remarks: **S 1/4 Corner of Section 31, T87N, R12W.**

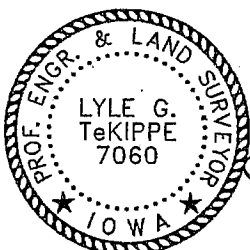
Found Concrete Monument with Brass Disk from WPA ties on file at the Black Hawk County Engineer's office.

PLAN - VIEW

(Show a minimum of three reference ties to durable physical objects, relevant monuments and physical conditions that will enable recovery of the corner.)



S 1/4 Corner
Found Concrete Monument



I hereby certify that this land surveying document was prepared and the related survey work was performed by me or under my direct personal supervision and that I am a duly licensed Land Surveyor under the laws of the State of Iowa.

Lyle G. TeKippe 12-10-07
Lyle G. TeKippe Date
License number 7060
My license renewal date is December 31, 2008.
Sheets covered by this seal: Individual

List Corners to be Indexed			
Corners	Section	Twp.	Range
S 1/4	31	87	12