

I *du*

Document Number: 2008007328

Date: Oct 02, 2007 4:30:00 pm

Aud Fee: 0.00 Rec Fee: 5.00

Trans Tax: 0.00 Rec Management Fee: 1.00

E-Com Fee: 1.00 Non-Standard Page Fee: 0.00

P

Filed for record in Black Hawk County, Iowa

Z

Judith A. McCarthy, County Recorder

Paul H. Helland, 1107 Technology Parkway, Cedar Falls, Iowa 50613-6951, (319)-266-0161

UNITED STATES PUBLIC LAND SURVEY CORNER CERTIFICATE
OFLAND SURVEY MONUMENTS SITUATED IN SECTION NO. 31, TOWNSHIP NO. 87 NORTH, RANGE
NO. 12 WEST OF THE FIFTH PRINCIPAL MERIDIAN, BLACK HAWK COUNTY, IOWA.

PREVIOUSLY RECORDED IN _____.

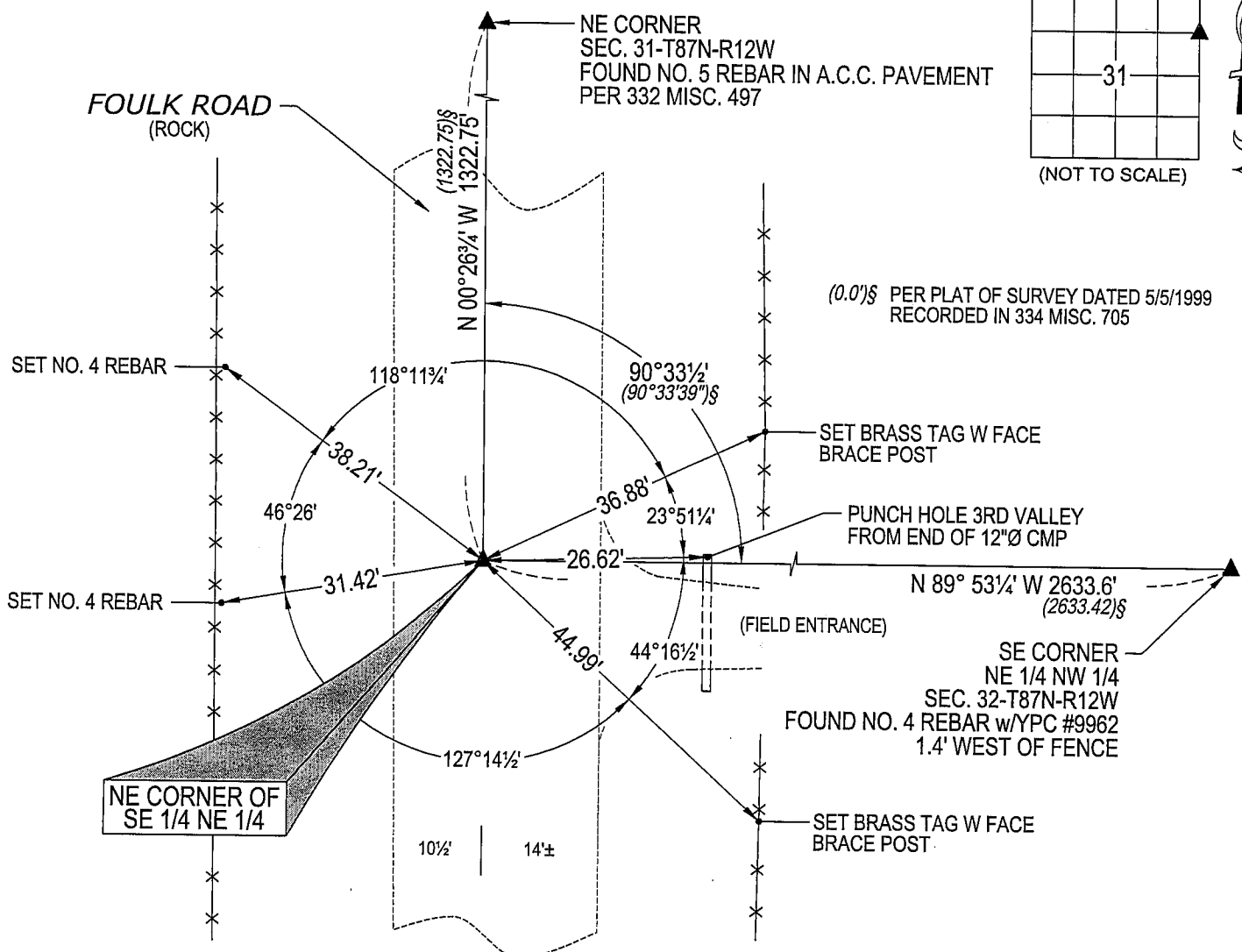
(SHOW REASON FOR PREPARING THIS CERTIFICATE, THE EVIDENCE AND DETAILED PROCEDURES USED IN ESTABLISHING THE
CORNER POSITIONS AND MONUMENTATION FOUND OR PLACED.)

MONUMENT DESCRIPTION AND REMARKS:

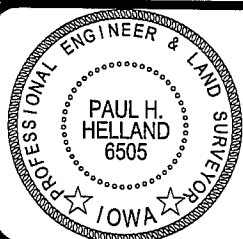
NO USPLSCC ON FILE. SURVEY COMPLETED IN THE NE 1/4 OF THE NW 1/4 OF SEC. 32-T87N-R12W.

→ **NE CORNER SE 1/4 NE 1/4:** NO BLACK HAWK COUNTY ENGINEER REFERENCE TIES AVAILABLE. PLAT OF
SURVEY DATED 5/5/1999 RECORDED IN 334 MISC. 705 CALLS FOR [1/2" IRON ROD w/CAP]. FOUND NO. 4 REBAR
(0.2' DEEP) CORRESPONDING WITHIN REASON TO SAID PLAT OF SURVEY.

PLAN VIEW

(SHOW A MINIMUM OF THREE REFERENCE TIES TO DURABLE PHYSICAL OBJECTS, RELEVANT MONUMENTS AND PHYSICAL
CONDITIONS THAT WILL ENABLE RECOVERY OF THE CORNER.)

(BEARINGS ARE ASSUMED)

HELLAND ENGINEERING & SURVEYING, LTD.
1107 Technology Parkway
Cedar Falls, Iowa 50613-6951
(319)-266-0161SHINER = 8D NAIL & 1 5/16"Ø METAL SHINER
BRASS TAG = 13/16"Ø BRASS TAG
OPC = PLASTIC CAP (O=ORANGE, R=RED, Y=YELLOW)
(00') RECORDED AS FILE NAME: 07-234C1.DWGI hereby certify that this land surveying document was prepared
and the related survey work was performed by me or under my
direct personal supervision and that I am a duly licensed Land
Surveyor under the laws of the State of Iowa.Paul H. Helland
License Number 6505
My license renewal date is December 31, 2007.
All pages or sheets are covered by this seal except:

LIST CORNERS TO BE INDEXED

CORNER	SECTION	TOWNSHIP	RANGE
NE CORNER SE 1/4 NE 1/4	31	87N	12W