



Doc ID: 004947440001 Type: GEN  
Kind: CORNER  
Recorded: 10/23/2012 at 10:17:21 AM  
Fee Amt: \$7.00 Page 1 of 1  
Black Hawk County Iowa  
JUDITH A MCCARTHY RECORDER

File 2013-00008234

Paul H. Helland, 1107 Technology Parkway, Cedar Falls, Iowa 50613-6951, (319)-266-0161

## UNITED STATES PUBLIC LAND SURVEY CORNER CERTIFICATE OF

LAND SURVEY MONUMENTS SITUATED IN SECTION NO. 31, TOWNSHIP NO. 87 NORTH, RANGE  
NO. 12 WEST OF THE FIFTH PRINCIPAL MERIDIAN, BLACK HAWK COUNTY, IOWA.  
PREVIOUSLY RECORDED IN MISC. BK 332 PG 496

(SHOW REASON FOR PREPARING THIS CERTIFICATE, THE EVIDENCE AND DETAILED PROCEDURES USED IN ESTABLISHING THE  
CORNER POSITIONS AND MONUMENTATION FOUND OR PLACED.)

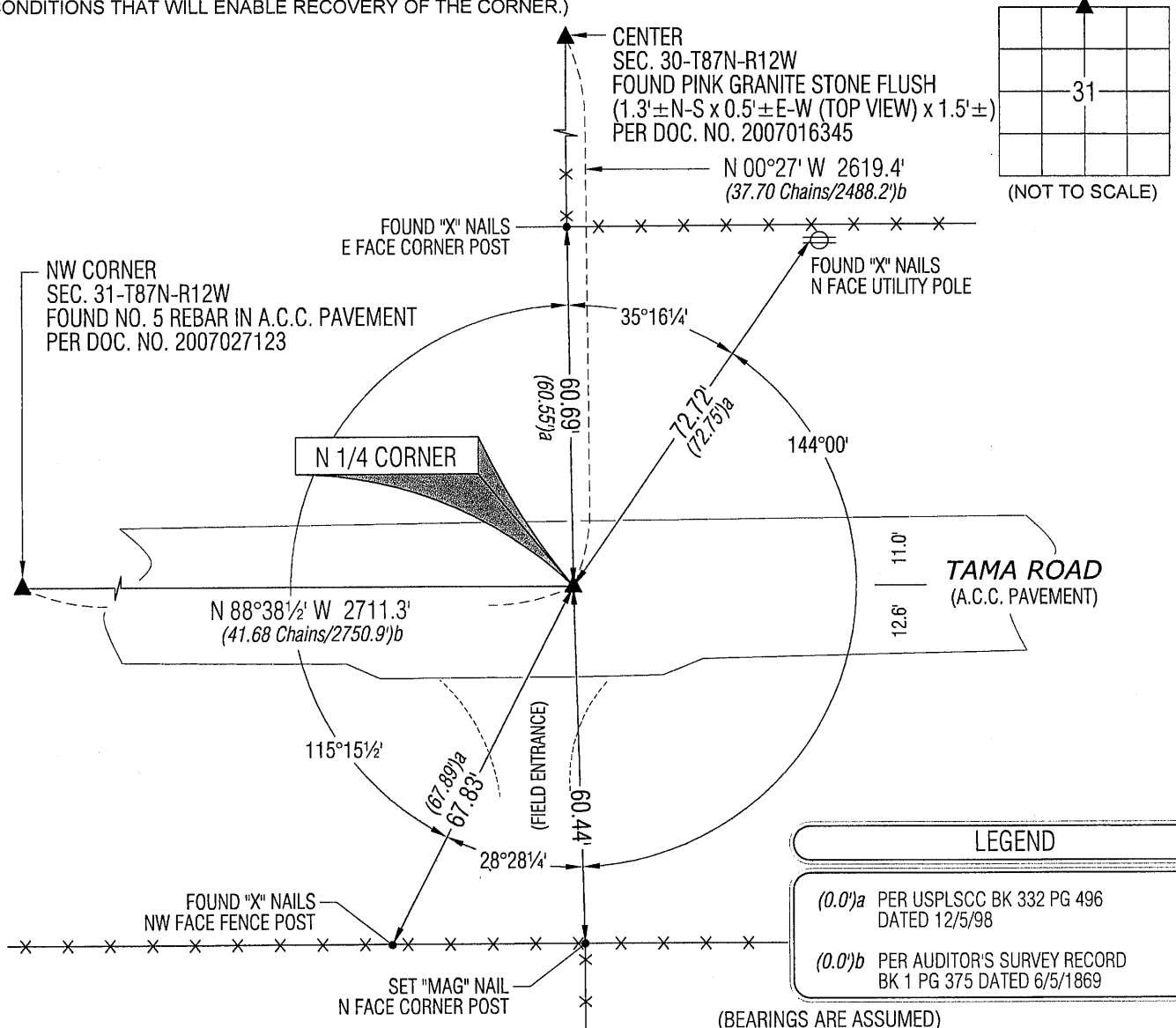
### MONUMENT DESCRIPTION AND REMARKS:

REMAINING REFERENCE TIES DIFFER SLIGHTLY. SURVEY COMPLETED IN THE SW 1/4 OF SEC. 30-T87N-R12W.

→ **N 1/4 CORNER:** USPLSCC MISC. BOOK 332 PAGE 496 DATED 12/5/98 CALLS FOR [FOUND 5/8" REBAR FLUSH W/A.C.C.  
SURF. IN CL ROAD.]. FOUND NO.5 REBAR FLUSH WITH A.C.C. IN CENTERLINE OF ROAD AND IN LINE WITH FENCES RUNNING  
NORTH AND SOUTH.

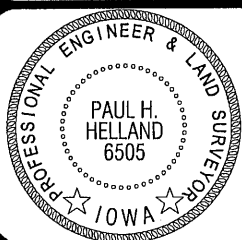
### PLAN VIEW

(SHOW A MINIMUM OF THREE REFERENCE TIES TO DURABLE PHYSICAL OBJECTS, RELEVANT MONUMENTS AND PHYSICAL  
CONDITIONS THAT WILL ENABLE RECOVERY OF THE CORNER.)



**HES** HELLAND ENGINEERING & SURVEYING, LTD.  
1107 Technology Parkway  
Cedar Falls, Iowa 50613-6951  
(319)-266-0161

SHINER = 8D NAIL & 1 5/16"Ø METAL SHINER  
BRASS TAG = 8D NAIL & 13/16"Ø BRASS TAG  
OPC = PLASTIC CAP (O=ORANGE, R=RED, Y=YELLOW)  
(00') RECORDED AS FILE NAME: 12-231-24.DWG



I hereby certify that this land surveying document was prepared  
and the related survey work was performed by me or under my  
direct personal supervision and that I am a duly licensed Land  
Surveyor under the laws of the State of Iowa.

Paul H. Helland  
License Number 6505  
My license renewal date is December 31, 2013.  
All pages or sheets are covered by this seal except:

### LIST CORNERS TO BE INDEXED

CORNER	SECTION	TOWNSHIP	RANGE
N 1/4 CORNER	31	87N	12W
S 1/4 CORNER	30	87N	12W