

SC
MISC
INDEX
MARGIN
PROOF
COMPARE

BLACK HAWK COUNTY IOWA:SS
Filed for record Dec 7, 1998 at 13371
4:00 P.M. and recorded in Book 332
of MISC Page 496
Recorder
Fee N/C
ENGINEER'S OFFICE

PREPARED BY: BLACK HAWK COUNTY ENGINEERS OFFICE
316 E. FIFTH STREET, ROOM 211 WATERLOO, IOWA 50703

PH# (319) 291-2419
FAX# (319) 291-2461
SLSI 9-94
CERT 12-96

UNITED STATES PUBLIC LAND SURVEY CORNER CERTIFICATE OF
Land Survey Monuments situated in Section 31, Township 87 N,
Range 12 W, of the Fifth Principal Meridian, BLACK HAWK County, Iowa.
Previously recorded in Misc. Book N/A, Page N/A, in County Recorder's Office.

(Show reason for preparing this certificate, the evidence and detailed procedures used in establishing the corner positions and monumentation found or placed.)

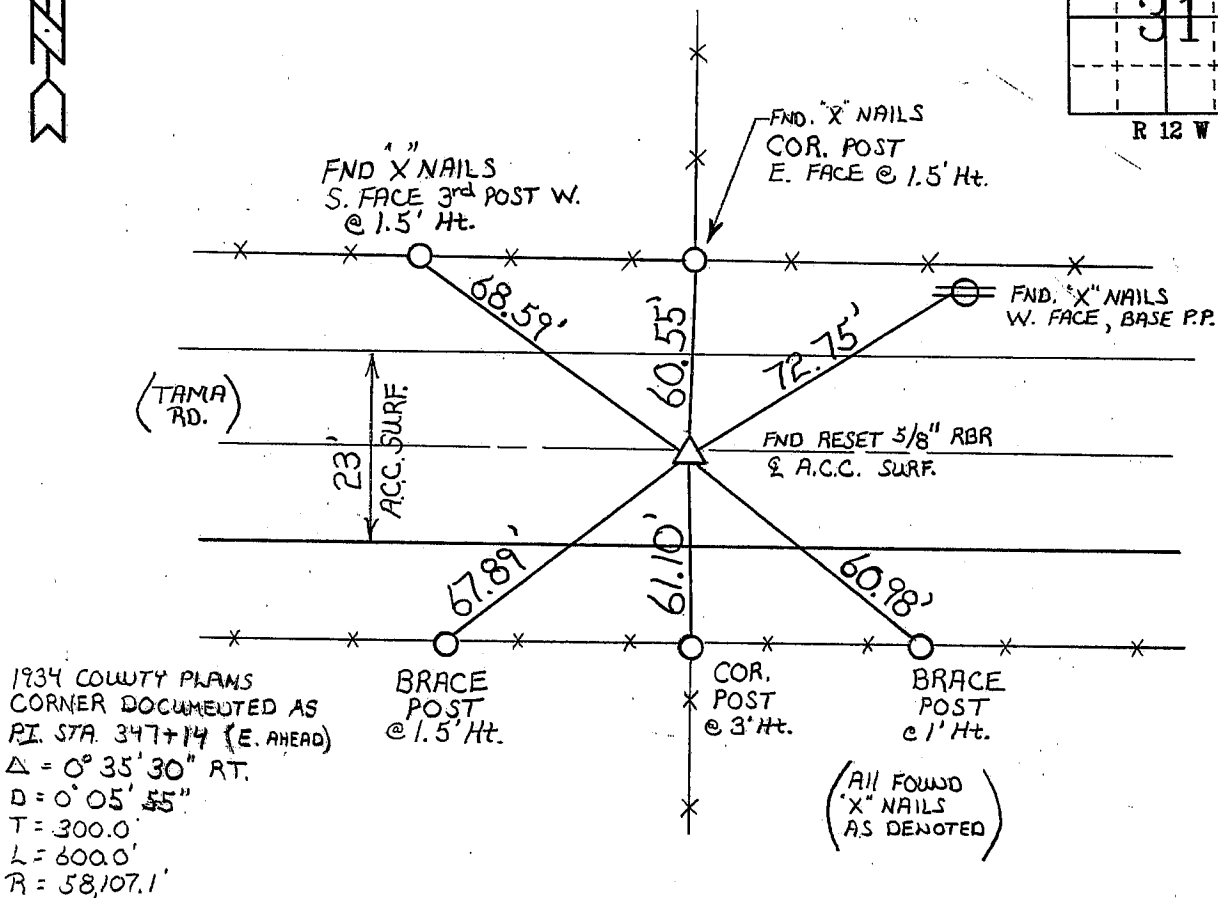
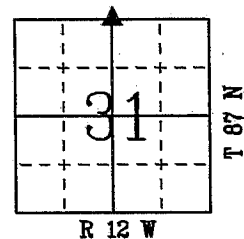
Monument Description and Remarks: N. 1/4 CORNER SECT. 31-87-12
AFTER RESURF., FOUND RESET 5/8" REBAR FLUSH W/ A.C.C. SURF. IN CL ROAD.
FOUND AND REFERENCED 6 SETS OF EXISTING REF. TIES FROM NOV. 1967.
FOUND TIES AGREE FROM A MIN. OF (+/-) 0.20' TO A MAX. OF 1', WITH ONE
TIE IN COMPLETE DISAGREEMENT.
RE-TIED FROM 1995 RESURF. PROJ. AND REF. TIE UPDATE SPRING 1997.

PLAN - VIEW

(Show a minimum of three reference ties to durable physical objects, relevant monuments and physical conditions that will enable recovery of the corner.)

NOTE: ALL DISTANCES PLUMB
UNLESS DENOTED.

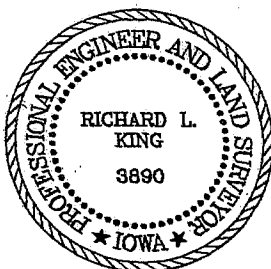
NOT TO SCALE



NOTE: CORNER CERTIFICATE FILED TO REPLACE COUNTY
PRESERVATION RECORD DATED 4/17/97

FIELD SURVEY: G.T. & B.S. APRIL 1997
PREPARED BY: C.W. & G.T. 12/02/98

CERTIFICATION



I hereby certify that this land surveying document
was prepared and the related survey work was
performed by me or under my direct personal
supervision and that I am a duly licensed Land
Surveyor under the laws of the State of Iowa.

Richard L. King 12/5/98
Richard L. King (date)

License Number 3890

My license renewal date is December 31, 1999

Pages or sheets covered by this seal:

This Land Corner Certificate Only.

LIST CORNERS TO BE INDEXED

| Corner | Section | Township | Range |
|--------|---------|----------|-------|
| N. 1/4 | 31 | 87 N | 12 W |