

Paul H. Helland, 1107 Technology Parkway, Cedar Falls, Iowa 50613-6951, (319)-266-0161

UNITED STATES PUBLIC LAND SURVEY CORNER CERTIFICATE OF

LAND SURVEY MONUMENTS SITUATED IN SECTION NO. 30, TOWNSHIP NO. 87 NORTH, RANGE
NO. 12 WEST OF THE FIFTH PRINCIPAL MERIDIAN, BLACK HAWK COUNTY, IOWA.
PREVIOUSLY RECORDED IN N/A

(SHOW REASON FOR PREPARING THIS CERTIFICATE, THE EVIDENCE AND DETAILED PROCEDURES USED IN ESTABLISHING THE
CORNER POSITIONS AND MONUMENTATION FOUND OR PLACED.)

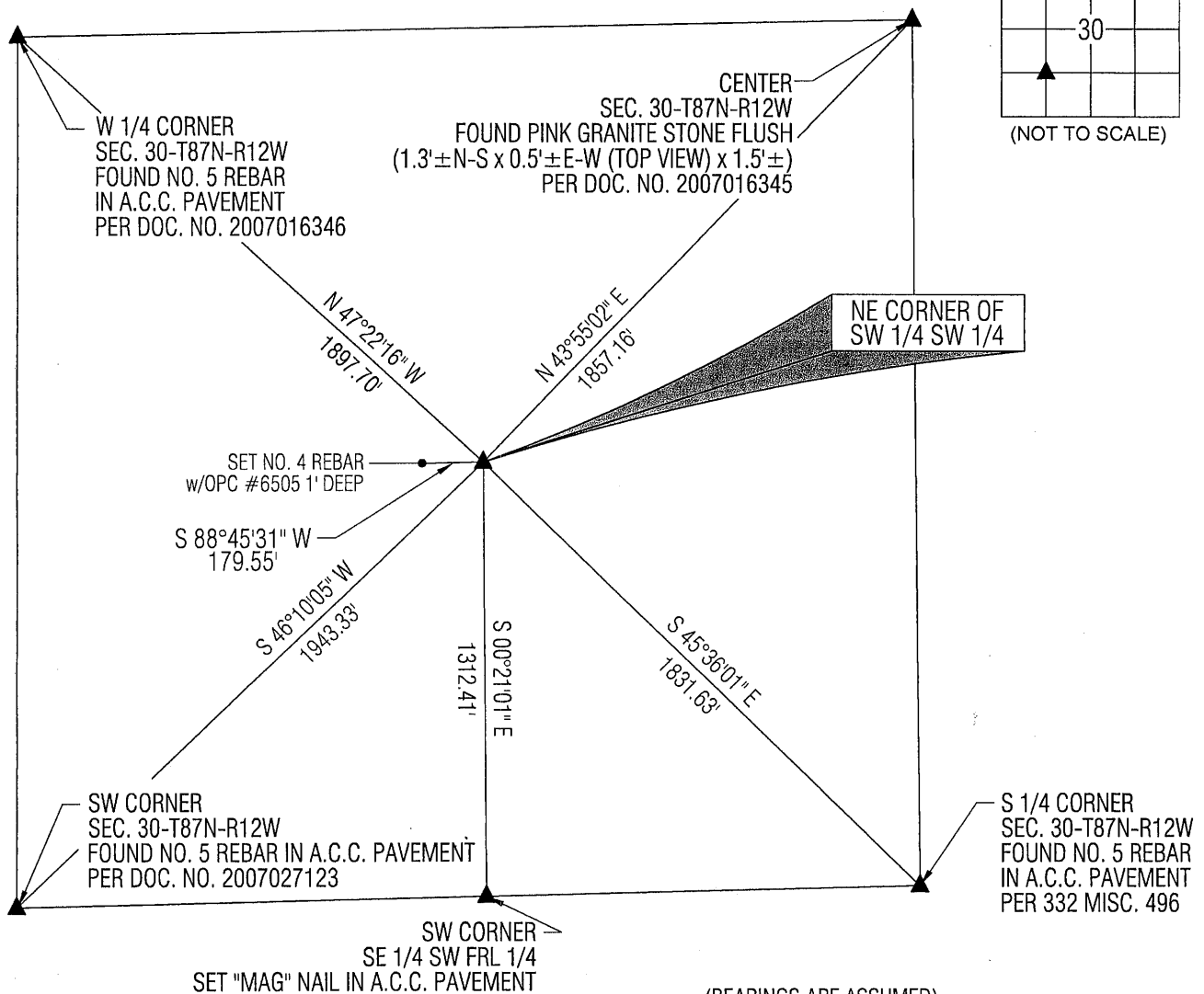
MONUMENT DESCRIPTION AND REMARKS:

NO USPLSCC ON FILE. SURVEY COMPLETED IN THE SW 1/4 OF SEC. 30-T87N-R12W.

→ **NE CORNER OF SW FRL 1/4 SW FRL 1/4:** NO BLACK HAWK COUNTY ENGINEER TIES AVAILABLE. SEARCHED AREA WITH
MAGNETIC DETECTOR NOTHING FOUND. SET NO.4 REBAR w/OPC #6505 (BURIED 1' DEEP) AT INTERSECTION OF OPPOSING
1/4 1/4 CORNERS. NO GERMANE, DURABLE OBJECTS TO REFERENCE TO, ALL IN CULTIVATED FIELD.

PLAN VIEW

(SHOW A MINIMUM OF THREE REFERENCE TIES TO DURABLE PHYSICAL OBJECTS, RELEVANT MONUMENTS AND PHYSICAL
CONDITIONS THAT WILL ENABLE RECOVERY OF THE CORNER.)



(BEARINGS ARE ASSUMED)



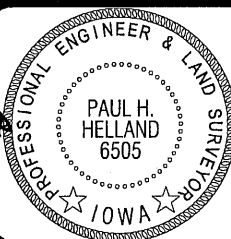
***HELLAND ENGINEERING & SURVEYING, LTD.**

1107 Technology Parkway
Cedar Falls, Iowa 50613-6951
(319)-266-0161

SHINER = 8D NAIL & 1 5/16"Ø METAL SHINER
BRASS TAG = 8D NAIL & 13/16"Ø BRASS TAG
OPC = PLASTIC CAP (O=ORANGE, R=RED, Y=YELLOW)
(00') RECORDED AS FILE NAME: 12-231-55.DWG

LIST CORNERS TO BE INDEXED

CORNER	SECTION	TOWNSHIP	RANGE
NE COR. SW 1/4 SW 1/4	30	87N	12W
SE COR. NW 1/4 SW 1/4	30	87N	12W
SW COR. NE 1/4 SW 1/4	30	87N	12W
NW COR. SE 1/4 SW 1/4	30	87N	12W



I hereby certify that this land surveying document was prepared
and the related survey work was performed by me or under my
direct personal supervision and that I am a duly licensed Land
Surveyor under the laws of the State of Iowa.

Paul H. Helland
Paul H. Helland
License Number 6505
My license renewal date is December 31, 2013.
All pages or sheets are covered by this seal except: