

**2025-13871**  
**RECORDED: 09/22/2025 11:28:02 AM**  
**RECORDING FEE: \$7.00**  
**IOWA E-FILING FEE: \$3.13**  
**COMBINED FEE: \$10.13**  
**REVENUE TAX: \$0.00**  
**SANDIE L. SMITH, RECORDER**  
**BLACK HAWK COUNTY, IOWA**

PREPARED BY/RETURN TO: JACOB A. LUZUM, 91 WEST, LLC, 2920 150th STREET, TRAEER, IOWA 50675 (319) 420-0184

## UNITED STATES PUBLIC LAND SURVEY CORNER CERTIFICATE

LAND SURVEY MONUMENTS SITUATED IN SECTION NO 30, TOWNSHIP NO 87 NORTH, RANGE NO 12 WEST OF THE FIFTH PRINCIPAL MERIDIAN, BLACK HAWK COUNTY, IOWA PREVIOUSLY RECORDED IN File #2012-01650

THIS CERTIFICATE IS BEING PREPARED IN COMPLIANCE WITH IOWA CODE CHAPTER 355.11 BECAUSE:

- THERE IS NO CERTIFICATE FOR THE CORNER ON FILE
- THE CORNER POSITION DIFFERS FROM PREVIOUS RECORD
- THE CORNER IS REPLACED OR MODIFIED
- EXISTING REFERENCE TIES ARE NOT CORRECT/NO LONGER THREE VALID REFERENCE TIES

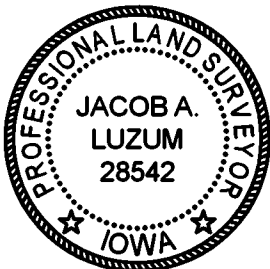
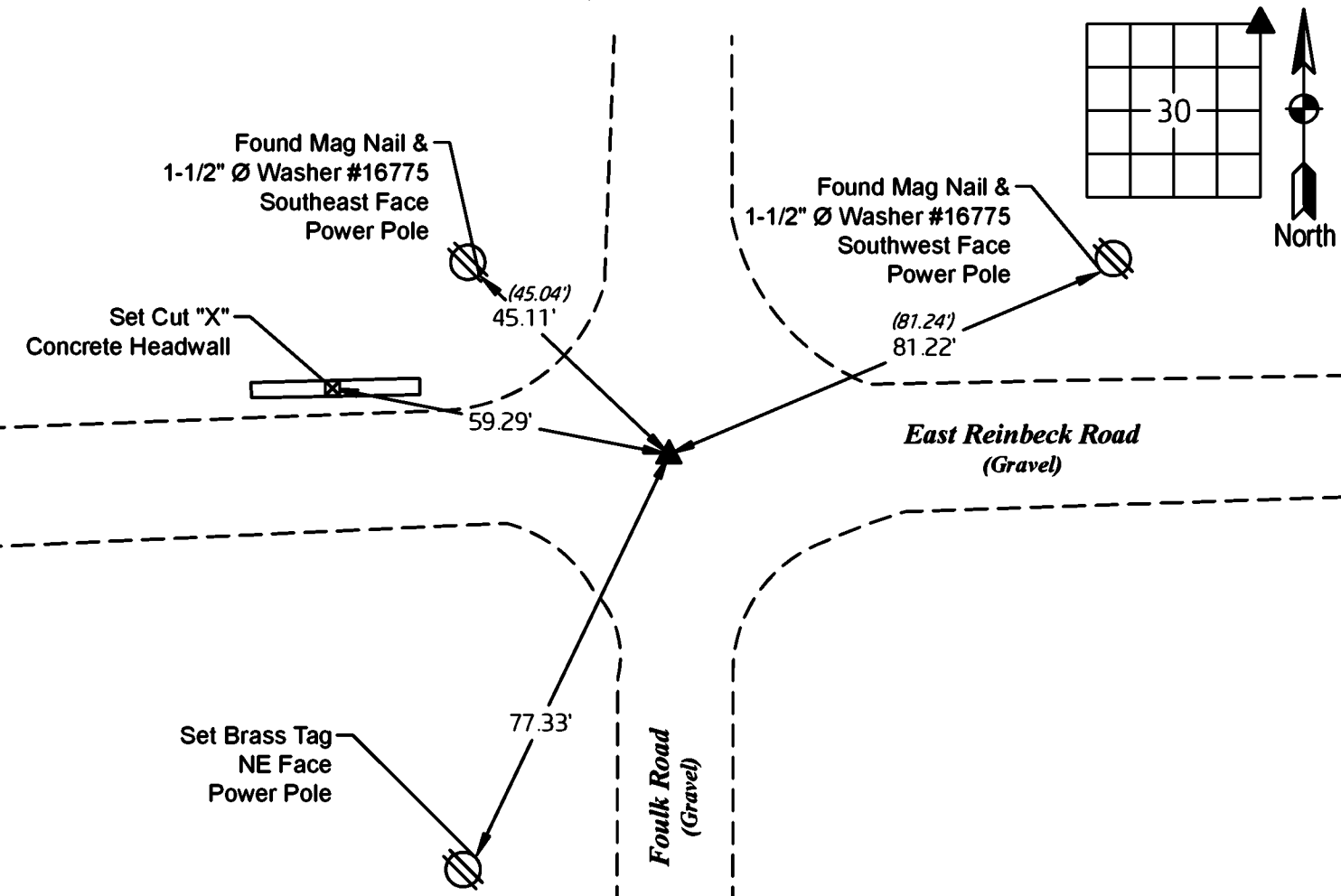
**MONUMENT DESCRIPTION AND REMARKS**

**NORTHEAST CORNER:** Searched area with metal detector, found No. 4 rebar 11" deep. Only two reference ties remain. Accepted No. 4 rebar as monument per previous corner certificate.

Survey completed in the SE 1/4 of Section 19-T87N-R12W.

### PLAN VIEW

(SHOW A MINIMUM OF THREE REFERENCE TIES TO DURABLE PHYSICAL OBJECTS, RELEVANT MONUMENTS AND PHYSICAL CONDITIONS THAT WILL ENABLE RECOVERY OF THE CORNER)



I hereby certify that this land surveying document was prepared and the related survey work was performed by me or under my direct personal supervision and that I am a duly licensed Professional Land Surveyor under the laws of the State of Iowa.

*Jacob A. Luzum*  
 Date: 9/22/2025

Jacob A. Luzum  
 License number 28542  
 My license renewal date is December 31, 2026  
 Pages or sheets covered by this seal: 1

**LIST OF CORNERS TO BE INDEXED**

CORNER	SECTION	TOWNSHIP	RANGE
NORTHEAST CORNER	30	87N	12W
SOUTHEAST CORNER	19	87N	12W
SOUTHWEST CORNER	20	87N	12W
NORTHWEST CORNER	29	87N	12W