

**2025-13869**  
**RECORDED: 09/22/2025 11:28:00 AM**  
**RECORDING FEE: \$7.00**  
**IOWA E-FILING FEE: \$3.13**  
**COMBINED FEE: \$10.13**  
**REVENUE TAX: \$0.00**  
**SANDIE L. SMITH, RECORDER**  
**BLACK HAWK COUNTY, IOWA**

PREPARED BY/RETURN TO: JACOB A. LUZUM, 91 WEST, LLC, 2920 150th STREET, TRAEER, IOWA 50675 (319) 420-0184

## UNITED STATES PUBLIC LAND SURVEY CORNER CERTIFICATE

LAND SURVEY MONUMENTS SITUATED IN SECTION NO 30, TOWNSHIP NO 87 NORTH, RANGE NO 12 WEST OF THE FIFTH PRINCIPAL MERIDIAN, BLACK HAWK COUNTY, IOWA PREVIOUSLY RECORDED IN N/A

THIS CERTIFICATE IS BEING PREPARED IN COMPLIANCE WITH IOWA CODE CHAPTER 355.11 BECAUSE:

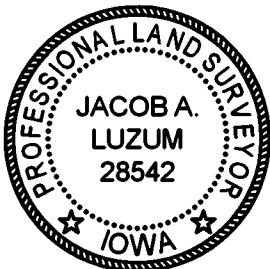
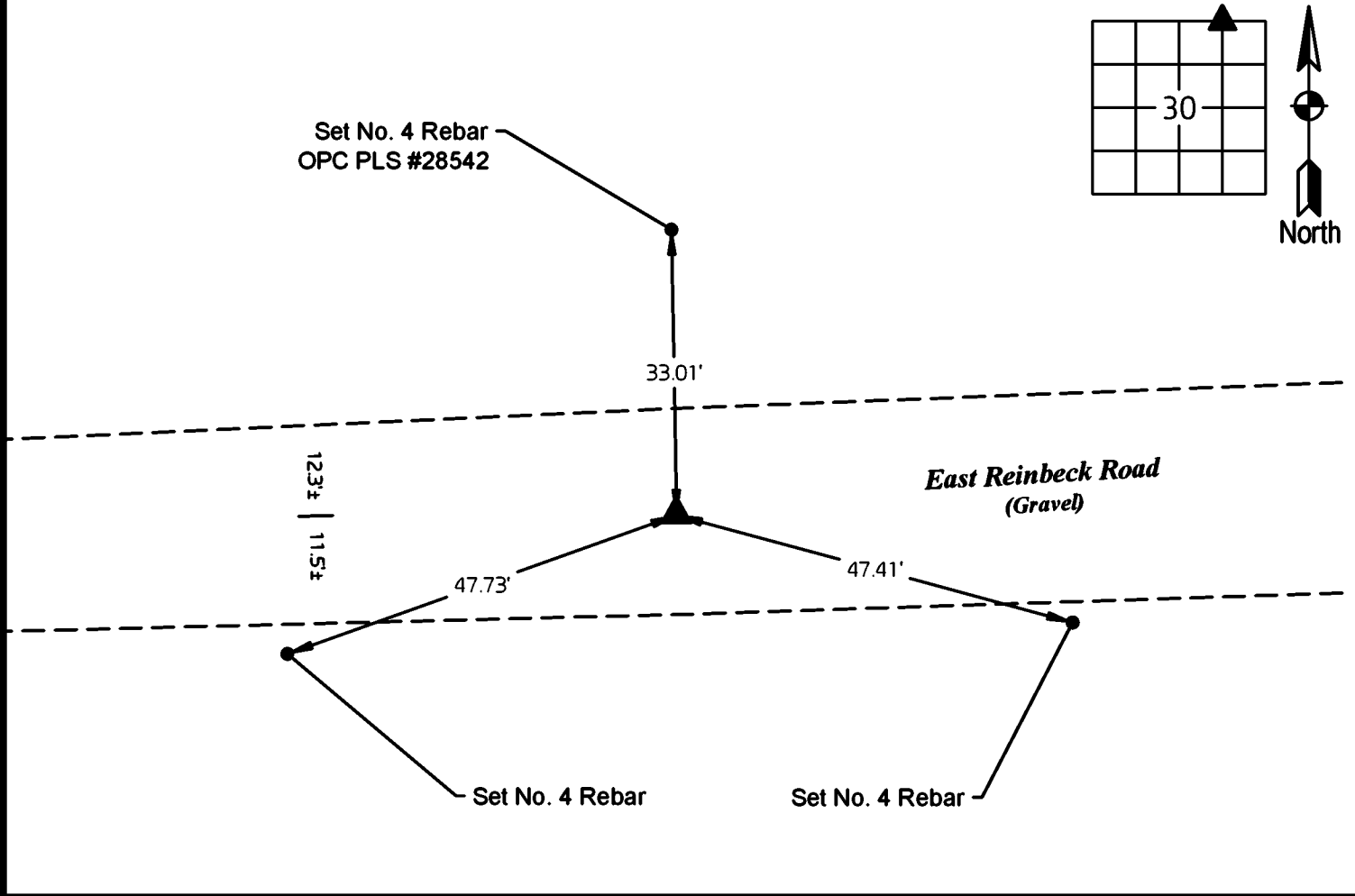
- THERE IS NO CERTIFICATE FOR THE CORNER ON FILE
- THE CORNER POSITION DIFFERS FROM PREVIOUS RECORD
- THE CORNER IS REPLACED OR MODIFIED
- EXISTING REFERENCE TIES ARE NOT CORRECT/NO LONGER THREE VALID REFERENCE TIES

**MONUMENT DESCRIPTION AND REMARKS**

**NORTHEASTE CORNER NW 1/4 NE 1/4:** Black Hawk County Engineer Survey by John Ball on page 375 calls for nothing found or set, shows a calculated position at midpoint between the Northeast corner and the North Quarter corner of section 30. Searched area, found nothing. Set No. 5 Rebar with 2" Aluminum Cap PLS #28542 at midpoint between the Northeast corner and the North Quarter corner. Survey completed in the SE 1/4 of Section 19-T87N-R12W.

### PLAN VIEW

(SHOW A MINIMUM OF THREE REFERENCE TIES TO DURABLE PHYSICAL OBJECTS, RELEVANT MONUMENTS AND PHYSICAL CONDITIONS THAT WILL ENABLE RECOVERY OF THE CORNER)



I hereby certify that this land surveying document was prepared and the related survey work was performed by me or under my direct personal supervision and that I am a duly licensed Professional Land Surveyor under the laws of the State of Iowa.

*Jacob A. Luzum*  
 Date: 9/22/2025

Jacob A. Luzum  
 License number 28542  
 My license renewal date is December 31, 2026  
 Pages or sheets covered by this seal: 1

LIST OF CORNERS TO BE INDEXED				
CORNER	SECTION	TOWNSHIP	RANGE	
NE CORNER NW 1/4 NE 1/4	30	87N	12W	
SE CORNER SW 1/4 SE 1/4	19	87N	12W	
SW CORNER SE 1/4 SE 1/4	19	87N	12W	
NW CORNER NE 1/4 NE 1/4	30	87N	12W	

Drawing Scale: Not to Scale  
 Drawn By: JAL  
 Project No. 25-021

**91 WEST, LLC**  
 2920 150th Street | (319) 420-0184  
 Traer, Iowa 50675 | 91westsurveying@gmail.com

Brass Tag: 6d Nail with 1"Ø Tag PLS #28542  
 (0.0) Recorded Dimension  
 Page 1 of 1