

Document Number: 2009002228
Date: Jul 28, 2008 4:30:00 pm
Aud Fee: 0.00 Rec Fee: 5.00
Trans Tax: 0.00 Rec Management Fee: 1.00
E-Com Fee: 1.00 Non-Standard Page Fee: 0.00
Filed for record in Black Hawk County, Iowa
Judith A. McCarthy, County Recorder

Jeffrey P. Helland, 1107 Technology Parkway, Cedar Falls, Iowa 50613-6951, (319)-266-0161

UNITED STATES PUBLIC LAND SURVEY CORNER CERTIFICATE
OF

LAND SURVEY MONUMENTS SITUATED IN SECTION NO. 27, TOWNSHIP NO. 87 NORTH, RANGE NO. 12 WEST OF THE FIFTH PRINCIPAL MERIDIAN, BLACK HAWK COUNTY, IOWA.
PREVIOUSLY RECORDED IN N/A

(SHOW REASON FOR PREPARING THIS CERTIFICATE, THE EVIDENCE AND DETAILED PROCEDURES USED IN ESTABLISHING THE CORNER POSITIONS AND MONUMENTATION FOUND OR PLACED.)

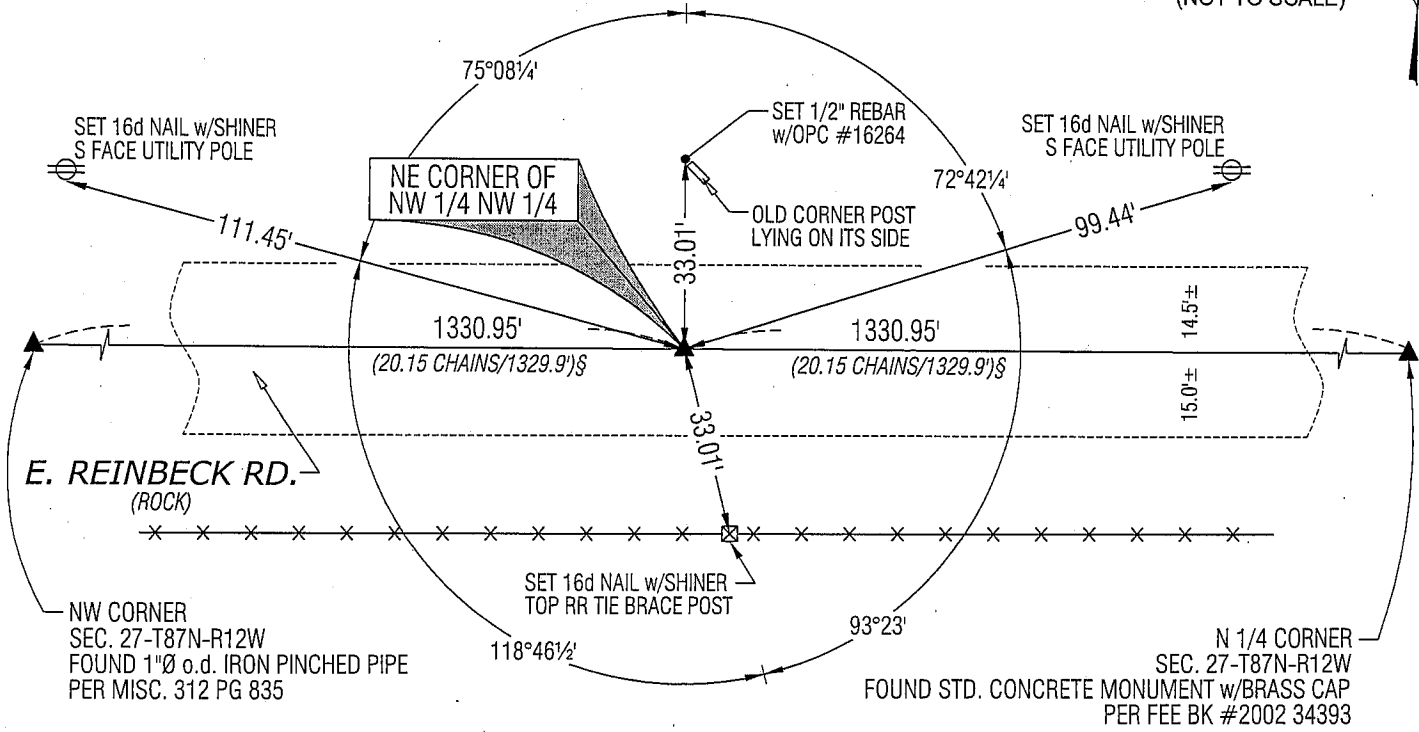
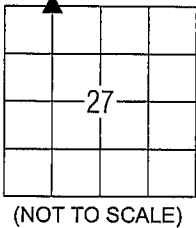
MONUMENT DESCRIPTION AND REMARKS:

NO USPLSCC ON FILE. SURVEY COMPLETED IN THE NW 1/4 & THE SW 1/4 OF SEC. 22-T87N-R12W.

NE CORNER OF NW 1/4 NW 1/4: BLACK HAWK COUNTY AUDITOR'S PLAT BY JOHN BALL DATED 12/30/1868 CALLS FOR [STONE]. NO BLACK HAWK COUNTY ENGINEER REFERENCE TIES AVAILABLE. NO EXCAVATION MADE IN ROCK ROAD. SET NO. 4 REBAR w/ALUMINUM CAP #16264 AT THE MIDPOINT OF A STRAIGHT LINE BETWEEN THE NW CORNER AND N 1/4 CORNER OF SEC. 27.

PLAN VIEW

(SHOW A MINIMUM OF THREE REFERENCE TIES TO DURABLE PHYSICAL OBJECTS, RELEVANT MONUMENTS AND PHYSICAL CONDITIONS THAT WILL ENABLE RECOVERY OF THE CORNER.)



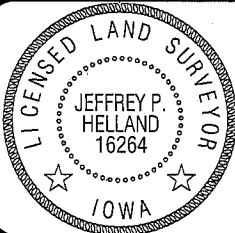
LEGEND

(0.0\')\$ PER AUDITOR'S PLAT BY JOHN BALL DATED 12/30/1868



HELLAND ENGINEERING & SURVEYING, LTD.
1107 Technology Parkway
Cedar Falls, Iowa 50613-6951
(319)-266-0161

SHINER = 8D NAIL & 1 5/16"Ø METAL SHINER
BRASS TAG = 13/16"Ø BRASS TAG
OPC = PLASTIC CAP (O=ORANGE, R=RED, Y=YELLOW)
(00') RECORDED AS FILE NAME: 08-230C2.DWG



I hereby certify that this land surveying document was prepared and the related survey work was performed by me or under my direct personal supervision and that I am a duly licensed Land Surveyor under the laws of the State of Iowa.
Jeffrey P. Helland 7/23/08
Jeffrey P. Helland
License Number 16264
My license renewal date is December 31, 2009.
All pages or sheets are covered by this seal except:

LIST CORNERS TO BE INDEXED			
CORNER	SECTION	TOWNSHIP	RANGE
NE COR. NW 1/4 NW 1/4	27	87N	12W
SE COR. SW 1/4 SW 1/4	22	87N	12W
SW COR. SE 1/4 SW 1/4	22	87N	12W
NW COR. NE 1/4 NW 1/4	27	87N	12W

Rec.