

PROOF FILED FOR RECORD JUN 26 2002 AT 11:30A. M. FEE 1-5.00/

COMPARED

BLACK HAWK COUNTY RECORDER

HELLAND ENGINEERING & SURVEYING LTD

Paul H. Helland, 1107 Technology Parkway, Cedar Falls, Iowa 50613-6951, (319)-266-0161

UNITED STATES PUBLIC LAND SURVEY CORNER CERTIFICATE

LAND SURVEY MONUMENTS SITUATED IN SECTION NO. 27, TOWNSHIP NO. 87 NORTH, RANGE
NO. 12 WEST OF THE FIFTH PRINCIPAL MERIDIAN, BLACK HAWK COUNTY, IOWA.

PREVIOUSLY RECORDED IN BOOK , PAGE .

(SHOW REASON FOR PREPARING THIS CERTIFICATE, THE EVIDENCE AND DETAILED PROCEDURES USED IN ESTABLISHING THE CORNER POSITIONS AND MONUMENTATION FOUND OR PLACED.)

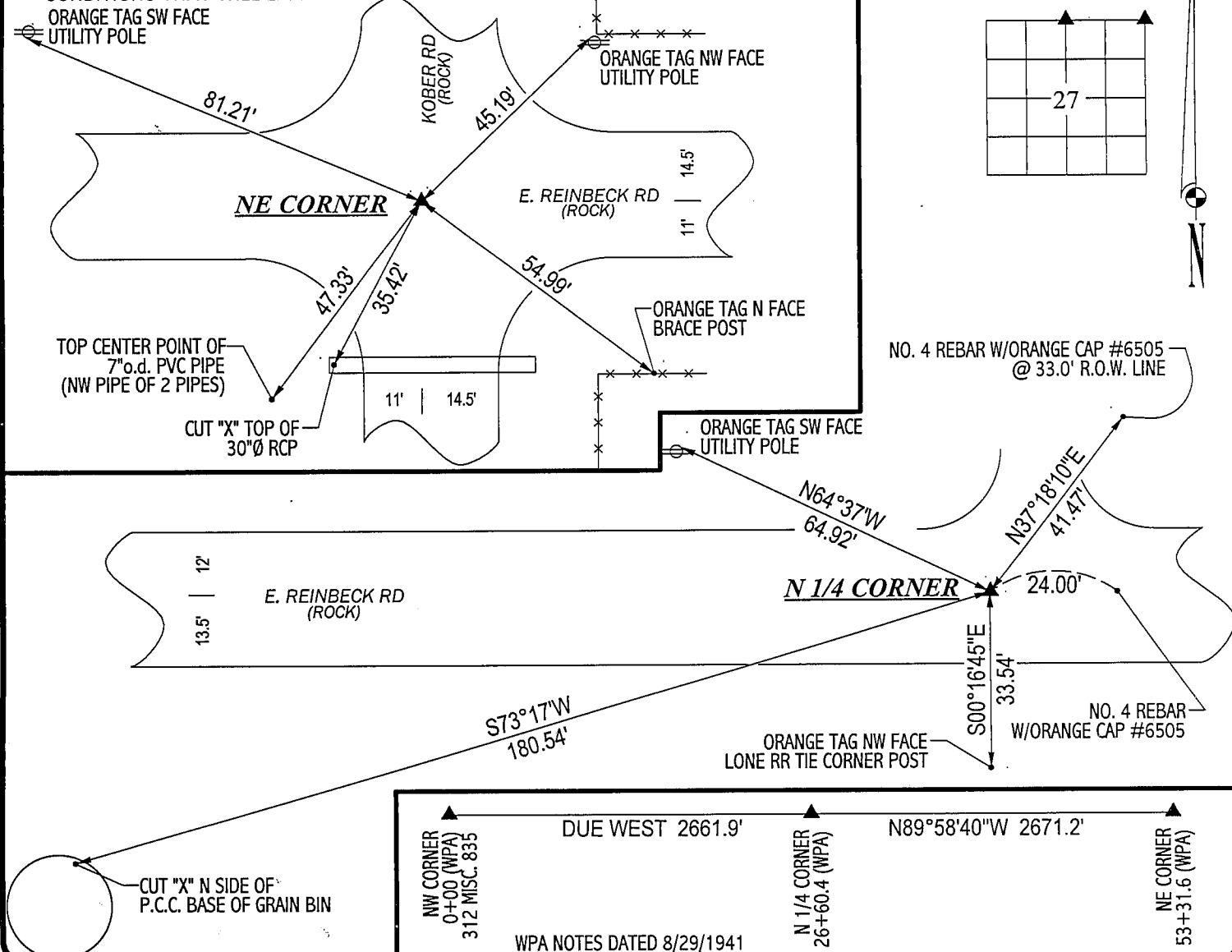
MONUMENT DESCRIPTION AND REMARKS:

NO CORNER CERTIFICATES ON FILE. SURVEY DONE IN S 1/2 OF SEC. 22-T87N-R12W.

- N 1/4 CORNER: ALL OF COUNTY ENGINEER REFERENCE TIES ARE OBLITERATED. FOUND CONCRETE MONUMENT W/BRASS CAP LABELED "22+27". CONCRETE MONUMENT IS ROTATED 90° FROM NORTH. CONCRETE MONUMENT IS 0.8' DEEP, SET NO. 4 REBAR ON NORTH SIDE OF C.M. FOR MAGNETIC DETECTION.
- NE CORNER: FOUND NO. 4 REBAR W/RED PAINT 0.3' DEEP PER COUNTY ENGINEER REFERENCE TIES. NO. 4 REBAR FITS 30"Ø RCP TO THE SOUTH AND CORNER POST TO THE NE (COUNTY ENGINEER TIES).

PLAN VIEW

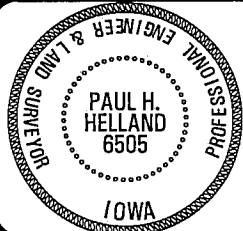
(SHOW A MINIMUM OF THREE REFERENCE TIES TO DURABLE PHYSICAL OBJECTS, RELEVANT MONUMENTS AND PHYSICAL CONDITIONS THAT WILL ENABLE RECOVERY OF THE CORNER.)



HELLAND ENGINEERING & SURVEYING, LTD.

1107 Technology Parkway
Cedar Falls, Iowa 50613-6951
(319)-266-0161

FILE NAME: 02-209CC.DRG



I hereby certify that this land surveying document was prepared and the related survey work was performed by me or under my direct personal supervision and that I am a duly licensed Land Surveyor under the laws of the State of Iowa.

Paul H. Hulland 6/25/02

Paul H. Helland
License Number 6505

My license renewal date is December 31, 2003.

All pages or sheets are covered by this seal except:

LIST CORNERS TO BE INDEXED

| CORNER | SECTION | TOWNSHIP | RANGE |
|--------------|---------|----------|-------|
| N 1/4 CORNER | 27 | 87N | 12W |
| NE CORNER | 27 | 87N | 12W |

Re