

Dennis R. Prange

BLACK HAWK COUNTY RECORDER

ENV PRANGE SURVEYING 3304 PANTHER LANE CEDAR FALLS IA 50613

Prepared by Dennis R. Prange, L.S., Prange Surveying, 3304 Panther Lane, Cedar Falls, Iowa 50613, (319) 277-4935

UNITED STATES PUBLIC LAND SURVEY CORNER CERTIFICATE
OFLand Survey Monuments situated in Section No. 27, Township No. 87 North, Range
No. 12 West, of the Fifth Principal Meridian, Black Hawk County, Iowa.Previously recorded in Book N/A on Page in the office of the County Recorder.
(book, page, document number, etc.)

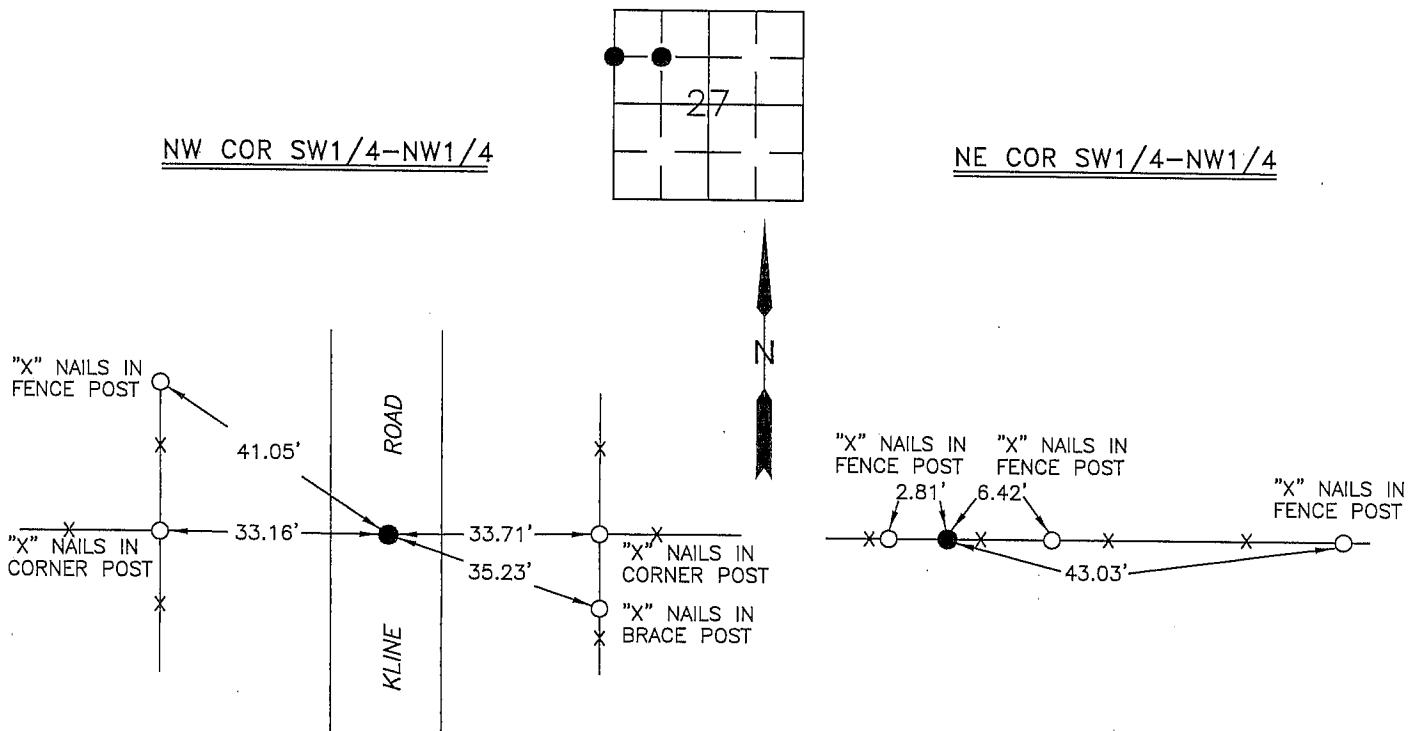
(Show reason for preparing this certificate, the evidence and detailed procedures used in establishing the corner positions and monumentation found or placed.)

Monument Description and Remarks: NW Corner SW1/4-NW1/4 Sec. 27-87-12 - Set 1/2"Ø X
24" rebar w/cap no. 10040 midway between West 1/4 Corner and Northwest Corner Section 27.
NE Corner SW1/4-NW1/4 Sec. 27-87-12 - Found stone 9" deep, Surveyor's Record Book 1,
Page 185. Set 1/2"Ø X 24" rebar along West side for magnetic detection purposes.

PLAN - VIEW

(Show a minimum of three reference ties to durable physical objects, relevant monuments and physical conditions that will enable recovery of the corner.)

NOT TO SCALE



ALL TIES ARE HORIZONTAL DISTANCES

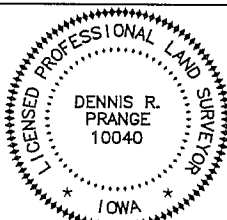
I hereby certify that this land surveying document was prepared by me or under my direct personal supervision and that I am a duly licensed Professional Land Surveyor under the laws of the State of Iowa.

Signed: *Dennis R. Prange*

Dennis R. Prange, L.S. Iowa License No. 10040

Date: June 26, 2006

SEAL

My License renewal date is December 31, 2006.
Pages or sheets covered by this seal : this page only

Corners	List Corners to be Indexed Section	Indexed Twp	Range
NW COR SW1/4-NW1/4	27	87	12
NE COR SW1/4-NW1/4	27	87	12

Drawn by: DRP

Checked by: