

ENTERED
VV 2-8-95
OKS 87

SLSI 9-90

UNITED STATES PUBLIC LAND SURVEY CORNER CERTIFICATE

OF

Land Survey Monuments situated in Section 26, Township 87N, Range 12W, of the Fifth Principal Meridian, BLACK HAWK County, Iowa.
Previously recorded in N/A in County Recorder's Office.

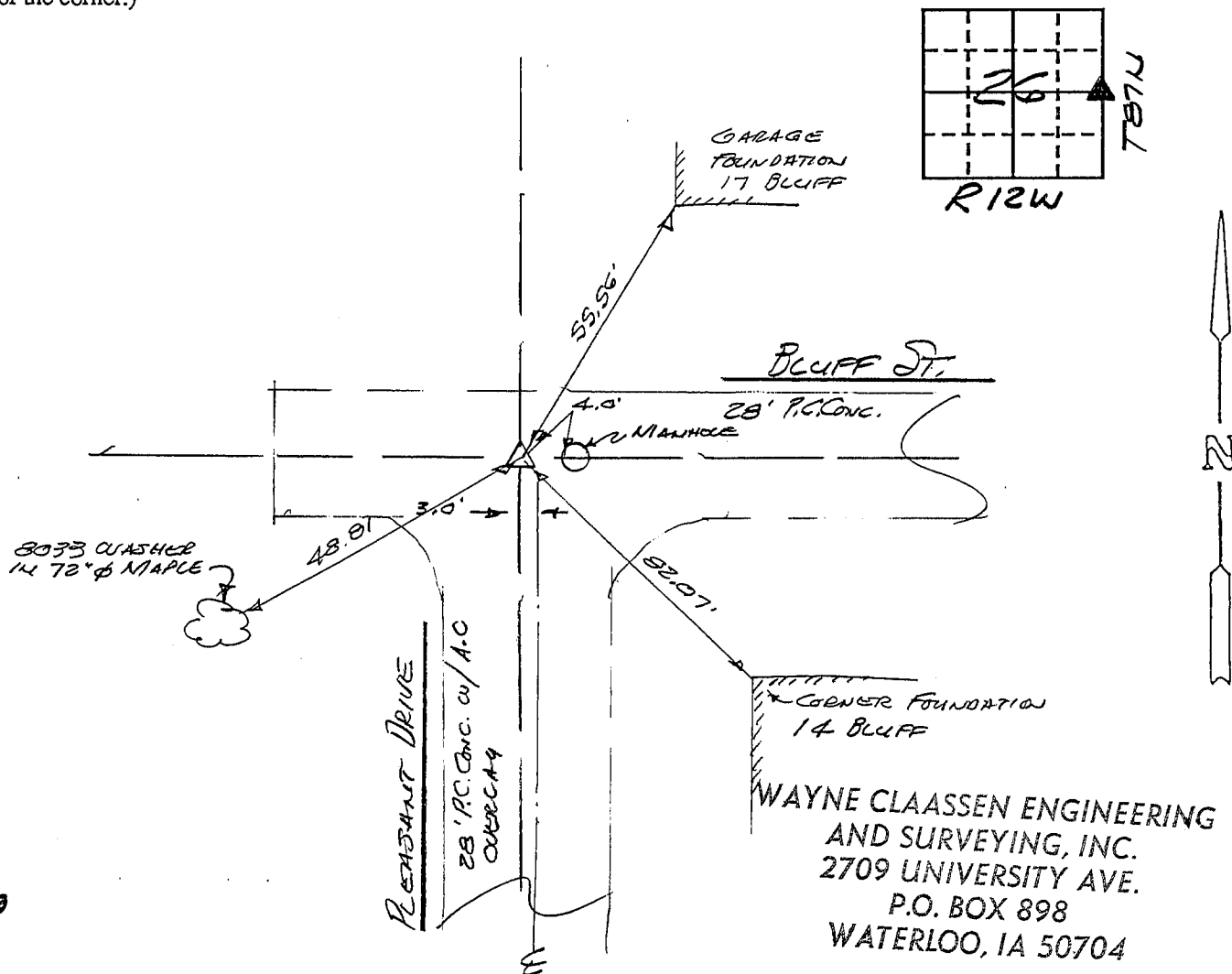
(book, page, document number, etc.)

(Show reason for preparing this certificate, the evidence and detailed procedures used in establishing the corner positions and monumentation found or placed.)

Monument Description and Remarks: FOUND "X" IN CONC. PAVING UNDER 1" ASPHALT OVERLAY, USING CES TIES OF 1976. (E 1/4 CORNER)

PLAN - VIEW

(Show a minimum of three reference ties to durable physical objects, relevant monuments and physical conditions that will enable recovery of the corner.)



408-29

I hereby certify that the survey work was completed and this certificate was prepared by me or under my direct personal supervision and that I am a duly registered land surveyor under the laws of the state of Iowa.

Signature: F. William King

Name typed or printed: F. WILLIAM KING

Date: 9-27-94 Reg. No. 8033



SEAL

Corners	Section	Twp	Range
E 1/4	26	87N	12W

MISC. BK. 312 p. 746