

MISC
INDEX
MARGIN
PROOF
COMPARE

BLACK HAWK COUNTY IOWA:SS
FILED FOR RECORD Feb 3, 1999 AT
4:00P.M AND RECORDED IN BOOK 333
OF MISC PAGE 275
FEE 1-5.00
RECORDER
PAUL HELLAND

18382

Paul H. Helland, 1107 Technology Parkway, Cedar Falls, Iowa 50613-6951, (319)-266-0161

UNITED STATES PUBLIC LAND SURVEY CORNER CERTIFICATE OF

LAND SURVEY MONUMENTS SITUATED IN SECTION NO. 25, TOWNSHIP NO. 87 NORTH, RANGE NO. 12 WEST OF THE FIFTH PRINCIPAL MERIDIAN, BLACK HAWK COUNTY, IOWA.
PREVIOUSLY RECORDED IN BOOK, PAGE

(SHOW REASON FOR PREPARING THIS CERTIFICATE, THE EVIDENCE AND DETAILED PROCEDURES USED IN ESTABLISHING THE CORNER POSITIONS AND MONUMENTATION FOUND OR PLACED.)

MONUMENT DESCRIPTION AND REMARKS:

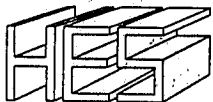
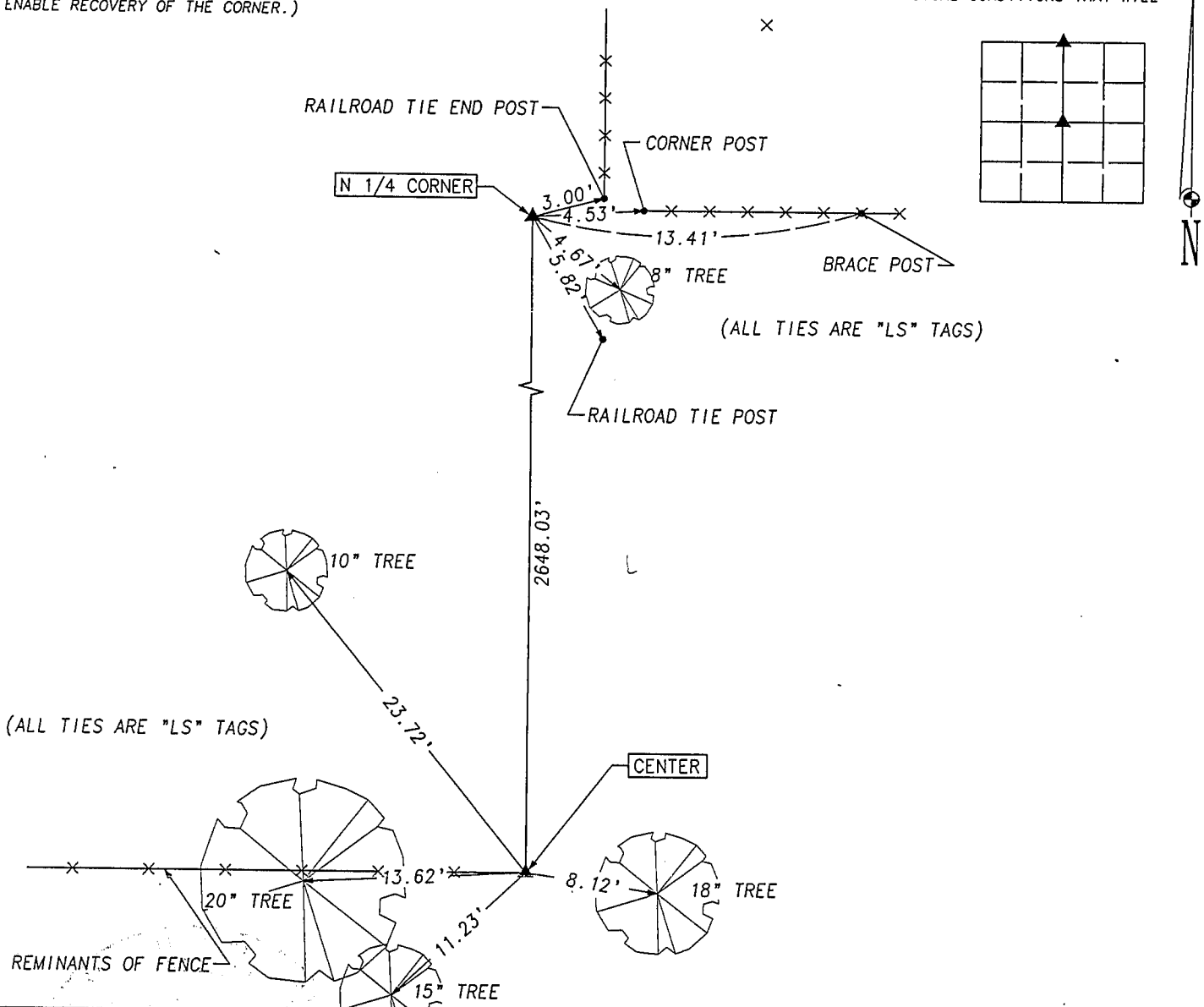
SURVEY DONE IN NW 1/4 SEC. 25-T87N-R12W

N 1/4 CORNER: FOUND TOP 8" OF BROKEN OFF CONCRETE MONUMENT W/BRASS CAP MARKED "24" Lying ON ITS SIDE. DUG HOLE AND FOUND BASE OF BROKEN CONCRETE MONUMENT, SET TOP IN PLACE AND SUPPORTED WITH NO. 4 REBARS ON ALL 4 SIDES

CENTER: FOUND STONE 1.5' DEEP AT BASE OF VERY OLD CORNER POST (ON ITS SIDE). SET 2" DIA. x 8' LONG PIPE 0.45 WEST OF CORNER. PIPE IS UP 0.4', ALL TIES ARE TO CORNER AND NOT TO PIPE.

PLAN VIEW

(SHOW A MINIMUM OF THREE REFERENCE TIES TO DURABLE PHYSICAL OBJECTS, RELEVANT MONUMENTS AND PHYSICAL CONDITIONS THAT WILL ENABLE RECOVERY OF THE CORNER.)



HELLAND ENGINEERING & SURVEYING, LTD.
1107 Technology Parkway
Cedar Falls, Iowa 50613-6951
(319)-266-0161



I hereby certify that this land surveying document was prepared and the related survey work was performed by me or under my direct personal supervision and that I am a duly licensed Land Surveyor under the laws of the State of Iowa.

Paul H. Helland 1/24/99
Paul H. Helland
License Number 6505 -
My license renewal date is December 31, 1999.
All pages or sheets are covered by this seal except:

LIST CORNERS TO BE INDEXED			
CORNER	SECTION	TOWNSHIP	RANGE
N 1/4 CORNER	25	87N	12W
CENTER	25	87N	12W