

INDEX 1/2
MARGIN
PROOF
COMPARE

BLACK HAWK COUNTY IOWA:SS 001837
Filed for record JUL 26, 2000 at
4:00 P.M. and recorded in Book _____
of _____ Page _____
Patricia A. Sess Recorder
FEE 1-5.00 /
HELLAND ENGINEERING

Paul H. Helland, 1107 Technology Parkway, Cedar Falls, Iowa 50613-6951, (319)-266-0161

UNITED STATES PUBLIC LAND SURVEY CORNER CERTIFICATE OF

LAND SURVEY MONUMENTS SITUATED IN SECTION NO. 24, TOWNSHIP NO. 87 NORTH, RANGE
NO. 12 WEST OF THE FIFTH PRINCIPAL MERIDIAN, BLACK HAWK COUNTY, IOWA.
PREVIOUSLY RECORDED IN BOOK _____, PAGE _____.

(SHOW REASON FOR PREPARING THIS CERTIFICATE, THE EVIDENCE AND DETAILED PROCEDURES USED IN ESTABLISHING THE
CORNER POSITIONS AND MONUMENTATION FOUND OR PLACED.)

MONUMENT DESCRIPTION AND REMARKS:

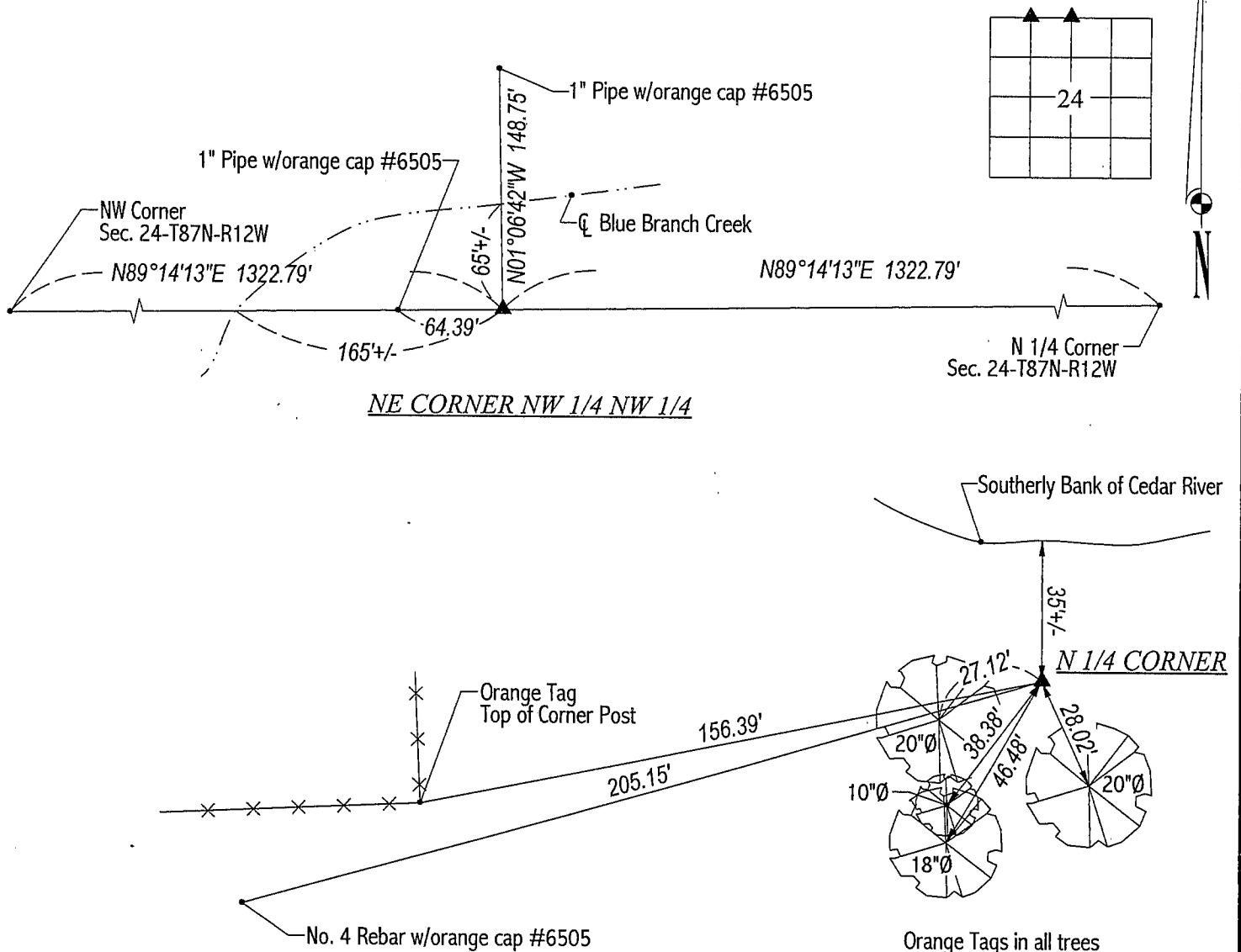
SURVEY DONE IN NW 1/4 OF SEC. 24-T87N-R12W.

N 1/4 CORNER: Found 0.1'Øx1.8' long pipe. Dug around pipe to a depth of 4' in sand. Lowered pipe and set 0.2'Øx4' long
steel pipe in 5 gallon bucket filled w/concrete. Filled steel pipe w/concrete and set No. 4 rebar w/orange cap #6505.

NE CORNER NW 1/4 NW 1/4: Set 1"Øx30" long pipe w/orange cap #6505 @ midpoint between the NW Corner & N 1/4 Corner.

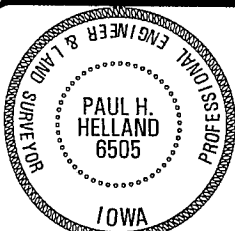
PLAN VIEW

(SHOW A MINIMUM OF THREE REFERENCE TIES TO DURABLE PHYSICAL OBJECTS, RELEVANT MONUMENTS AND PHYSICAL
CONDITIONS THAT WILL ENABLE RECOVERY OF THE CORNER.)



HELLAND ENGINEERING & SURVEYING, LTD.
1107 Technology Parkway
Cedar Falls, Iowa 50613-6951
(319)-266-0161

FILE NAME: 00-168C3.DRG



I hereby certify that this land surveying document was prepared
and the related survey work was performed by me or under my
direct personal supervision and that I am a duly licensed Land
Surveyor under the laws of the State of Iowa.

Paul H. Helland 7/6/00
Paul H. Helland
License Number 6505
My license renewal date is December 31, 2001.
All pages or sheets are covered by this seal except:

LIST CORNERS TO BE INDEXED

CORNER	SECTION	TOWNSHIP	RANGE
N 1/4 CORNER	24	87N	12W
NE CORNER NW 1/4 NW 1/4	24	87N	12W