

Paul H. Helland, 1107 Technology Parkway, Cedar Falls, Iowa 50613-6951, (319)-266-0161

UNITED STATES PUBLIC LAND SURVEY CORNER CERTIFICATE
OF

LAND SURVEY MONUMENTS SITUATED IN SECTION NO. 23, TOWNSHIP NO. 87 NORTH, RANGE
NO. 12 WEST OF THE FIFTH PRINCIPAL MERIDIAN, BLACK HAWK COUNTY, IOWA.
PREVIOUSLY RECORDED IN N/A

(SHOW REASON FOR PREPARING THIS CERTIFICATE, THE EVIDENCE AND DETAILED PROCEDURES USED IN ESTABLISHING THE
CORNER POSITIONS AND MONUMENTATION FOUND OR PLACED.)

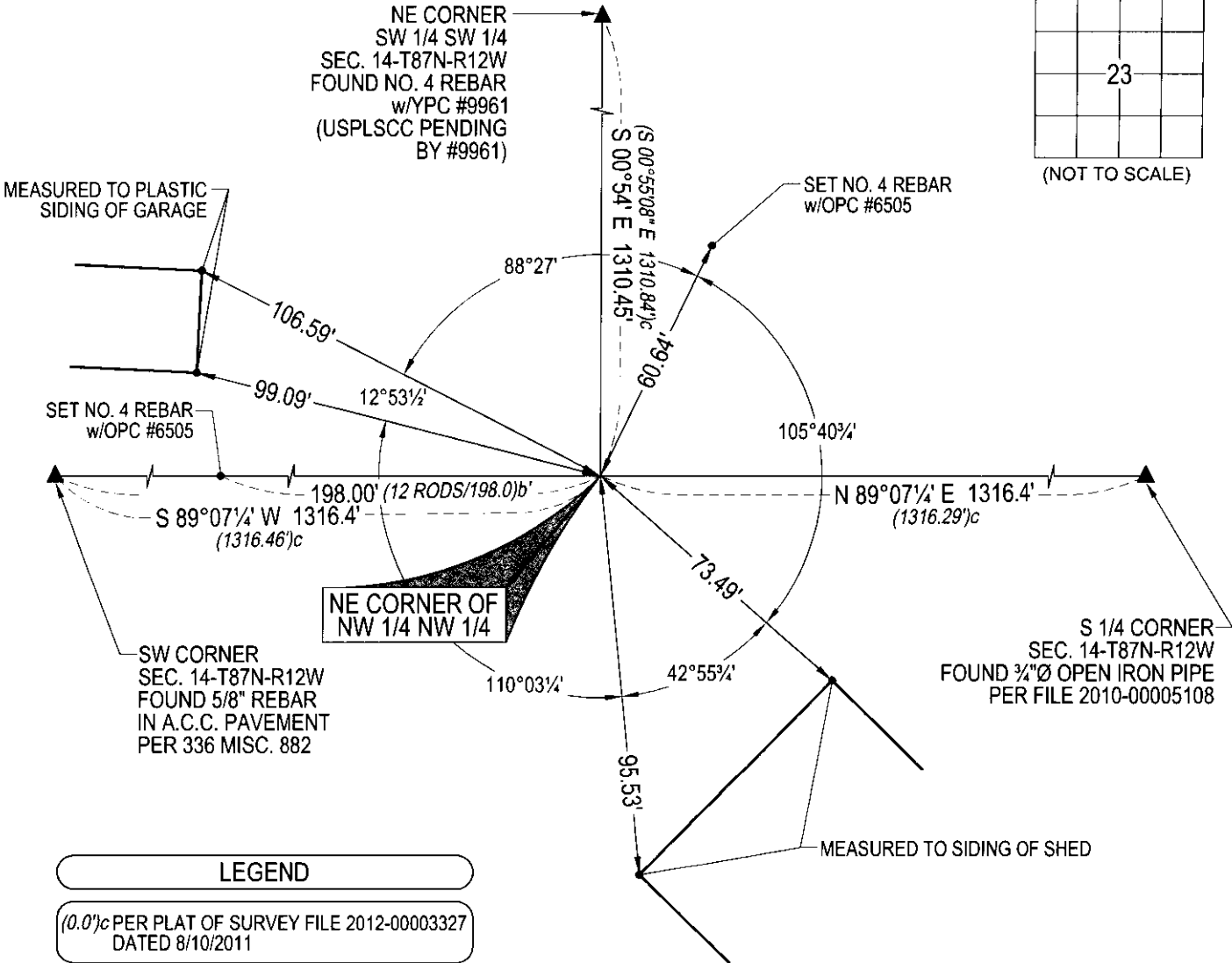
MONUMENT DESCRIPTION AND REMARKS:

NO USPLSCC ON FILE. SURVEY COMPLETED IN THE SW 1/4 OF SEC. 14-T87N-R12W & NW 1/4 OF
SEC. 23-T87N-R12W.

→ **NE CORNER NW 1/4 NW 1/4:** NO BLACK HAWK COUNTY ENGINEER'S REFERENCE TIES AVAILABLE. SEARCHED
AREA NOTHING FOUND, THEREFORE SET NO. 4 REBAR WITH LICENSE #6505 AT THE MID POINT OF A LINE
BETWEEN THE NORTH 1/4 CORNER AND THE NORTHWEST CORNER OF SECTION 23-T87N-R12W.

PLAN VIEW

(SHOW A MINIMUM OF THREE REFERENCE TIES TO DURABLE PHYSICAL OBJECTS, RELEVANT MONUMENTS AND PHYSICAL
CONDITIONS THAT WILL ENABLE RECOVERY OF THE CORNER.)

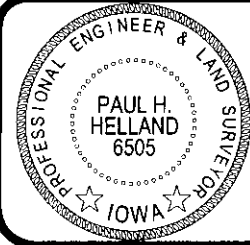


(BEARINGS ARE ASSUMED)



HELLAND ENGINEERING & SURVEYING, LTD.
1107 Technology Parkway
Cedar Falls, Iowa 50613-6951
(319)-266-0161

SHINER = 8d. NAIL & 1 5/16" Ø METAL SHINER DRAWN BY: CDR
BRASS TAG = 8d. NAIL & 13/16" Ø BRASS TAG
OPC = PLASTIC CAP (O=ORANGE, R=RED, Y=YELLOW)
(00') RECORDED AS FILE NAME: 15-156-53.DWG



I hereby certify that this land surveying document was prepared
and the related survey work was performed by me or under my
direct personal supervision and that I am a duly licensed
Professional Land Surveyor under the laws of the State of Iowa.
Paul H. Helland 5/26/15
Paul H. Helland
License Number 6505
My license renewal date is December 31, 2015.
All pages or sheets are covered by this seal except:

LIST CORNERS TO BE INDEXED			
CORNER	SECTION	TOWNSHIP	RANGE
NE COR. NW 1/4 NW 1/4	23	87N	12W
SE COR. SW 1/4 SW 1/4	14	87N	12W
SW COR. SE 1/4 SW 1/4	14	87N	12W
NW COR. NE 1/4 NW 1/4	23	87N	12W

File Number: 2015-00019144 Seq: 1

Rec (7.00)