



Doc ID: 007097110001 Type: GEN  
Recorded: 08/05/2016 at 02:24:39 PM  
Fee Amt: \$7.00 Page 1 of 1  
Black Hawk County Iowa  
SANDIE L. SMITH RECORDER

File 2017-00002446

Kyle J. Helland, 1107 Technology Parkway, Cedar Falls, Iowa 50613-6951, (319)-266-0161

Reserved for County Recorder's use.

## UNITED STATES PUBLIC LAND SURVEY CORNER CERTIFICATE OF

LAND SURVEY MONUMENTS SITUATED IN SECTION NO. 23, TOWNSHIP NO. 87 NORTH, RANGE  
NO. 12 WEST OF THE FIFTH PRINCIPAL MERIDIAN, BLACK HAWK COUNTY, IOWA.  
PREVIOUSLY RECORDED IN N/A.

(SHOW REASON FOR PREPARING THIS CERTIFICATE, THE EVIDENCE AND DETAILED PROCEDURES USED IN ESTABLISHING THE  
CORNER POSITIONS AND MONUMENTATION FOUND OR PLACED.)

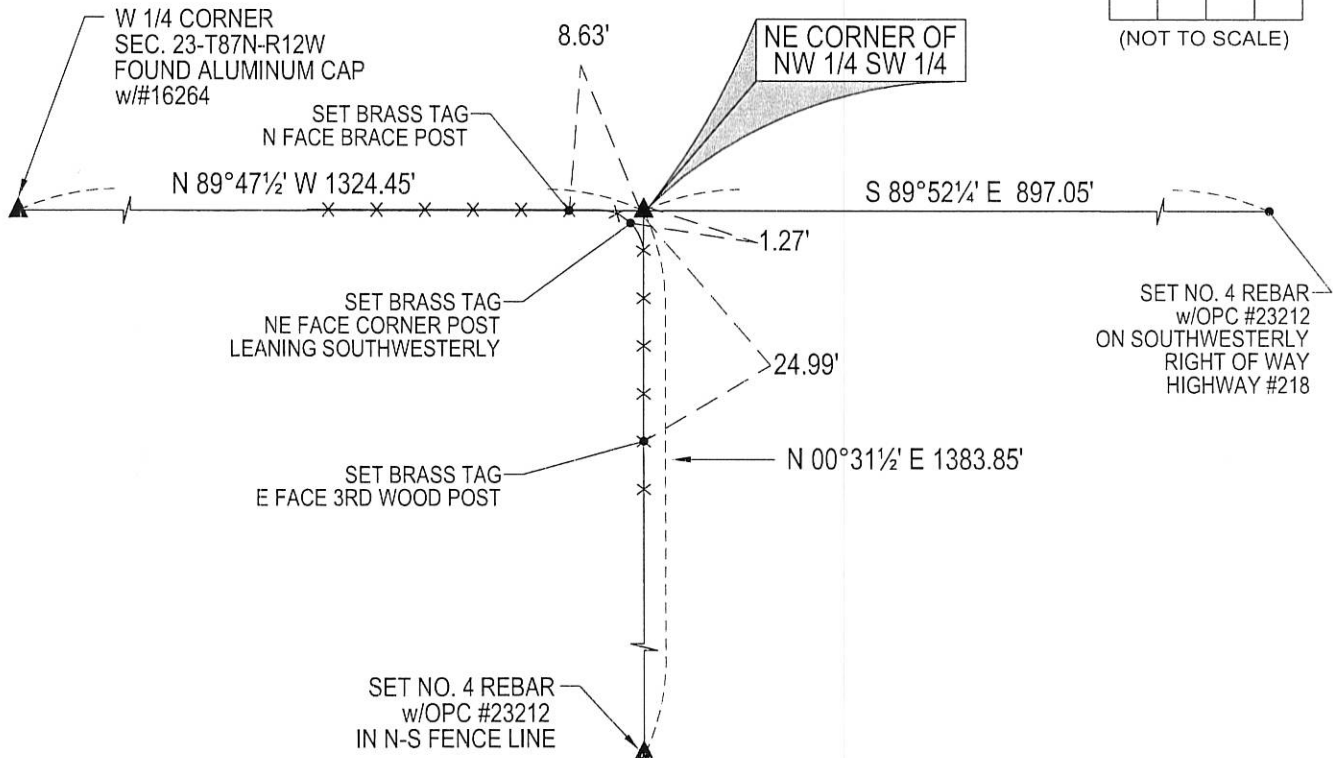
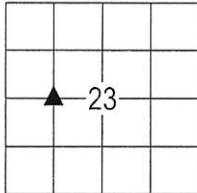
### MONUMENT DESCRIPTION AND REMARKS:

NO USPLSCC ON FILE. SURVEY COMPLETED IN THE SW 1/4 OF SEC. 23-T87N-R12W.

→ **NE CORNER NW 1/4 SW 1/4:** SEARCHED AREA WITH METAL DETECTOR AND FOUND NOTHING. PROBED AREA  
TWO FEET IN DIAMETER IN LINE WITH FENCES HIT NOTHING. SET NO. 4 w/OPC #23212 IN LINE WITH FENCE  
LINES SOUTH AND WEST, CORNER POST LEANING SOUTHWESTERLY.

### PLAN VIEW

(SHOW A MINIMUM OF THREE REFERENCE TIES TO DURABLE PHYSICAL OBJECTS, RELEVANT MONUMENTS AND PHYSICAL  
CONDITIONS THAT WILL ENABLE RECOVERY OF THE CORNER.)



(BEARINGS ARE ASSUMED)



HELLAND ENGINEERING & SURVEYING, LTD.  
1107 Technology Parkway  
Cedar Falls, Iowa 50613-6951  
(319)-266-0161

SHINER = 8d. NAIL & 1 5/16"Ø METAL SHINER DRAWN BY: SMN  
BRASS TAG = 8d. NAIL & 13/16"Ø BRASS TAG  
OPC = PLASTIC CAP (O=ORANGE, R=RED, Y=YELLOW)  
(00') RECORDED AS FILE NAME: 16-172-51.DWG



I hereby certify that this land surveying document was prepared  
and the related survey work was performed by me or under my  
direct personal supervision and that I am a duly licensed  
Professional Land Surveyor under the laws of the State of Iowa.  
*Kyle J. Helland* 8-5-16  
Kyle J. Helland  
License Number 23212  
My license renewal date is December 31, 2017.  
All pages or sheets are covered by this seal except:

LIST CORNERS TO BE INDEXED			
CORNER	SECTION	TOWNSHIP	RANGE
NE COR. NW 1/4 SW 1/4	23	87N	12W
SE COR. NW 1/4 SW 1/4	23	87N	12W
SW COR. NE 1/4 SW 1/4	23	87N	12W
NW COR. SE 1/4 SW 1/4	23	87N	12W