

PAUL HELLAND

I

P

Z

Document Number: 2009002229
Date: Jul 28, 2008 4:30:00 pm
Aud Fee: 0.00 Rec Fee: 5.00
Trans Tax: 0.00 Rec Management Fee: 1.00
E-Com Fee: 1.00 Non-Standard Page Fee: 0.00
Filed for record in Black Hawk County, Iowa
Judith A. McCarthy, County Recorder

Jeffrey P. Helland, 1107 Technology Parkway, Cedar Falls, Iowa 50613-6951, (319)-266-0161

UNITED STATES PUBLIC LAND SURVEY CORNER CERTIFICATE
OF

LAND SURVEY MONUMENTS SITUATED IN SECTION NO. 22, TOWNSHIP NO. 87 NORTH, RANGE
NO. 12 WEST OF THE FIFTH PRINCIPAL MERIDIAN, BLACK HAWK COUNTY, IOWA.
PREVIOUSLY RECORDED IN N/A.

(SHOW REASON FOR PREPARING THIS CERTIFICATE, THE EVIDENCE AND DETAILED PROCEDURES USED IN ESTABLISHING THE
CORNER POSITIONS AND MONUMENTATION FOUND OR PLACED.)

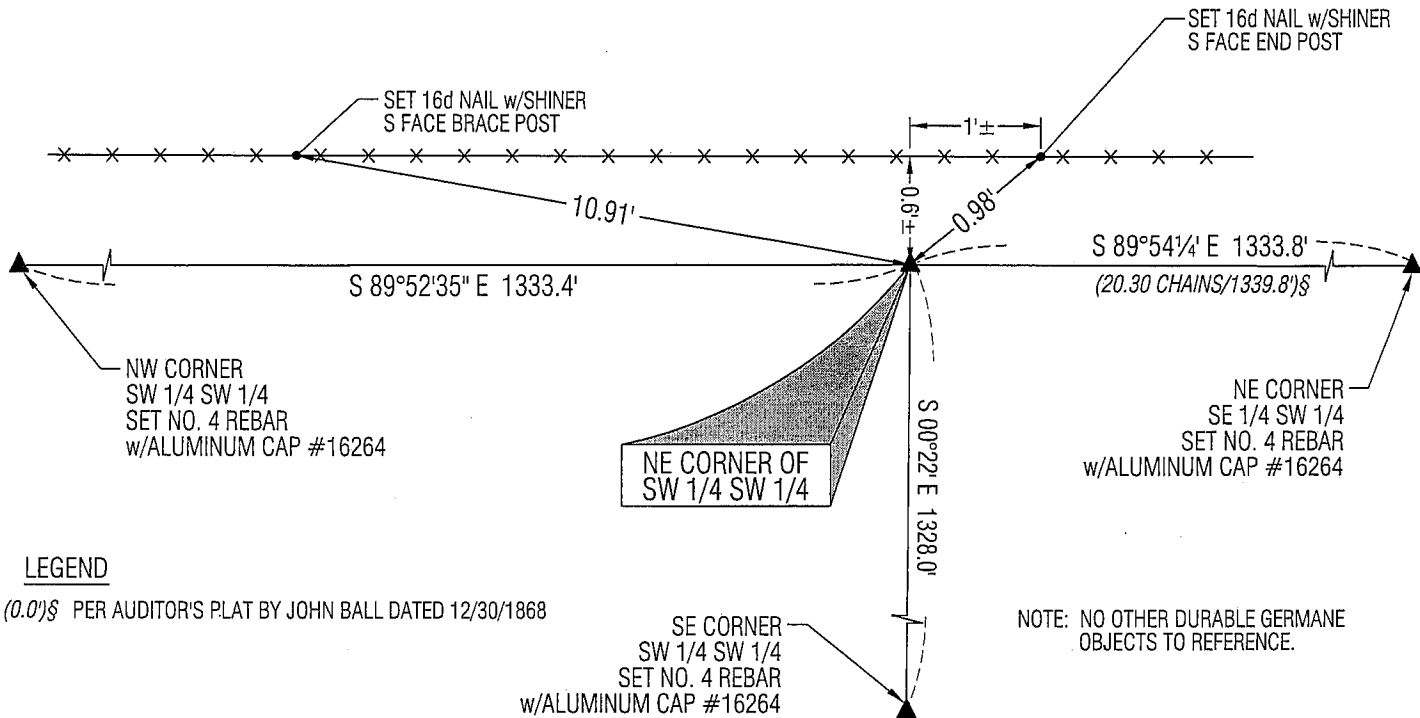
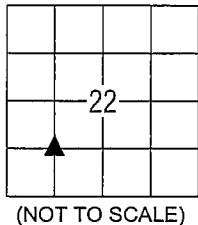
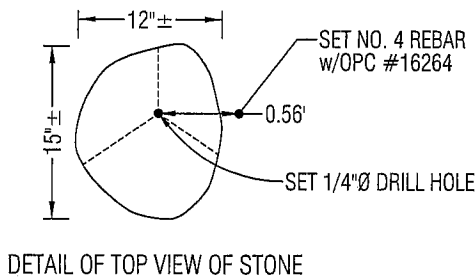
MONUMENT DESCRIPTION AND REMARKS:

NO USPLSCC ON FILE. SURVEY COMPLETED IN THE NW 1/4 & THE SW 1/4 OF SEC. 22-T87N-R12W.

NE CORNER OF SW 1/4 SW 1/4: NO BLACK HAWK COUNTY ENGINEER REFERENCE TIES AVAILABLE. BLACK HAWK COUNTY
AUDITOR'S PLAT BY JOHN BALL DATED 12/30/1868 CALLS FOR [STAKE]. FOUND 15"±N-Sx12"±E-W(TOP VIEW) BLUE-GRAY
GRANITE STONE 0.1' DEEP w/PYRAMID SHAPE AND DISTINCT HIGH POINT. DRILLED 1/4"Ø HOLE @ SAID HIGH POINT. SET
NO. 4 REBAR w/OPC #16264 0.56' EAST OF SAID 1/4"Ø HOLE FOR MAGNETIC DETECTION.

PLAN VIEW

(SHOW A MINIMUM OF THREE REFERENCE TIES TO DURABLE PHYSICAL OBJECTS, RELEVANT MONUMENTS AND PHYSICAL
CONDITIONS THAT WILL ENABLE RECOVERY OF THE CORNER.)



LEGEND

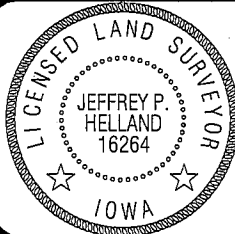
(0.0')§ PER AUDITOR'S PLAT BY JOHN BALL DATED 12/30/1868

(BEARINGS ARE ASSUMED)



HELLAND ENGINEERING & SURVEYING, LTD.
1107 Technology Parkway
Cedar Falls, Iowa 50613-6951
(319)-266-0161

SHINER = 8D NAIL & 1 5/16"Ø METAL SHINER
BRASS TAG = 13/16"Ø BRASS TAG
OPC = PLASTIC CAP (O=ORANGE, R=RED, Y=YELLOW)
(00') RECORDED AS FILE NAME: 08-230C3.DWG



I hereby certify that this land surveying document was prepared
and the related survey work was performed by me or under my
direct personal supervision and that I am a duly licensed Land
Surveyor under the laws of the State of Iowa.
Jeffrey P. Helland 7/23/08
Jeffrey P. Helland
License Number 16264
My license renewal date is December 31, 2009.
All pages or sheets are covered by this seal except:

LIST CORNERS TO BE INDEXED

CORNER	SECTION	TOWNSHIP	RANGE
NE COR. SW 1/4 SW 1/4	22	87N	12W
SE COR. NW 1/4 SW 1/4	22	87N	12W
SW COR. NE 1/4 SW 1/4	22	87N	12W
NW COR. SE 1/4 SW 1/4	22	87N	12W