

Jeffrey P. Helland, 1107 Technology Parkway, Cedar Falls, Iowa 50613-6951, (319)-266-0161

UNITED STATES PUBLIC LAND SURVEY CORNER CERTIFICATE OF

LAND SURVEY MONUMENTS SITUATED IN SECTION NO. 22, TOWNSHIP NO. 87 NORTH, RANGE
NO. 12 WEST OF THE FIFTH PRINCIPAL MERIDIAN, BLACK HAWK COUNTY, IOWA.
PREVIOUSLY RECORDED IN N/A

(SHOW REASON FOR PREPARING THIS CERTIFICATE, THE EVIDENCE AND DETAILED PROCEDURES USED IN ESTABLISHING THE CORNER POSITIONS AND MONUMENTATION FOUND OR PLACED.)

MONUMENT DESCRIPTION AND REMARKS:

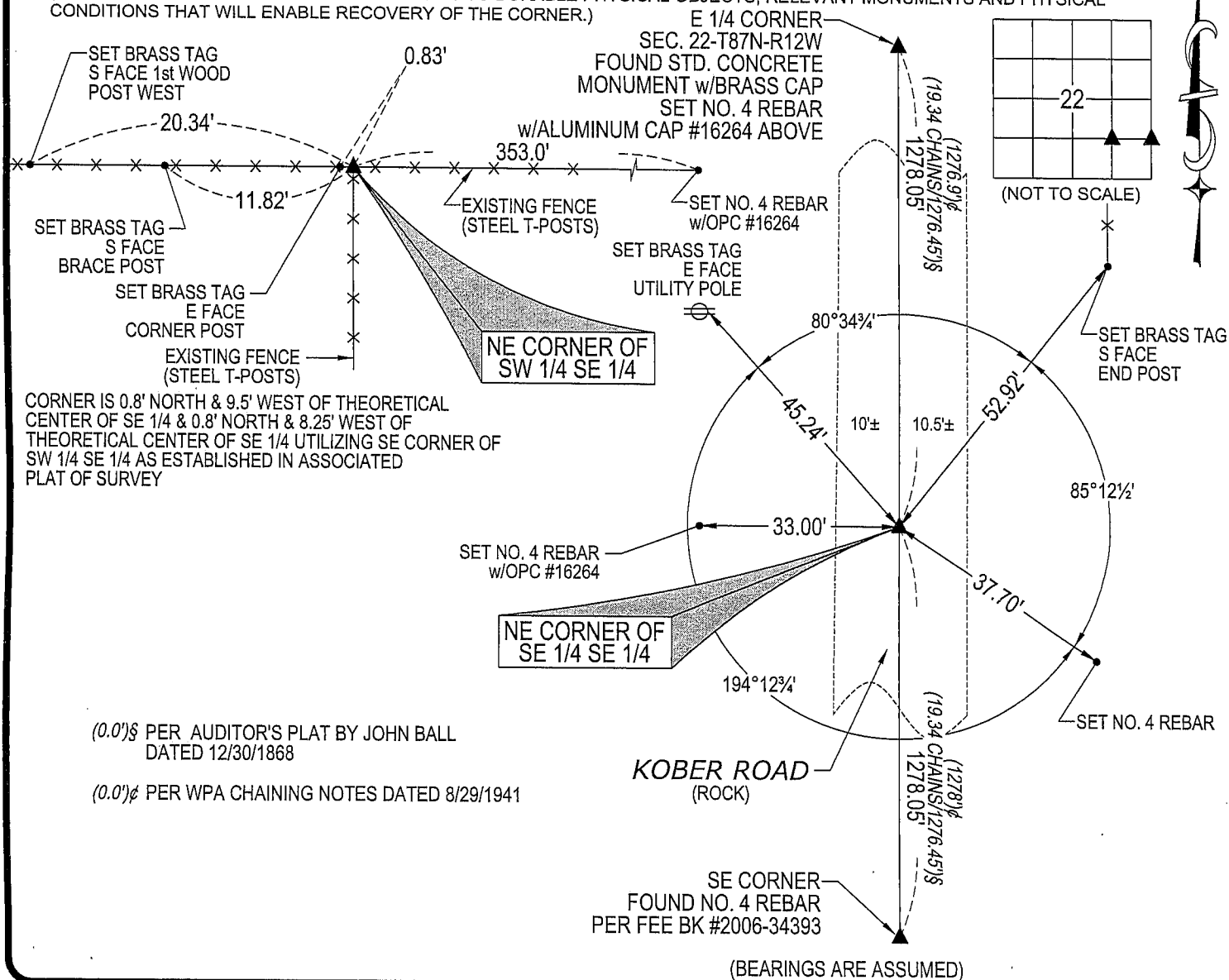
NO USPLSCC ON FILE. SURVEY COMPLETED IN THE SE 1/4 OF THE SE 1/4 OF SEC. 22-T87N-R12W.

→ **NE CORNER SE 1/4 SE 1/4:** AUDITOR'S PLAT BY JOHN BALL DATED 12/30/1868 CALLS FOR [STAKE & ?????]. NO BLACK HAWK COUNTY ENGINEER REFERENCE TIES AVAILABLE. SET NO. 4 REBAR w/ALUMINUM CAP #16264 AT THE MIDPOINT OF A LINE BETWEEN THE E 1/4 CORNER AND SE CORNER.

→ **NE CORNER SW 1/4 SE 1/4:** AUDITOR'S PLAT BY JOHN BALL DATED 12/30/1868 CALLS FOR [STAKE]. NO BLACK HAWK COUNTY ENGINEER REFERENCE TIES AVAILABLE. SET NO. 4 REBAR w/ALUMINUM CAP #16264 AT THE BASE OF AN ANCIENT CORNER POST. **PLAN VIEW**

PLAN VIEW

(SHOW A MINIMUM OF THREE REFERENCE TIES TO DURABLE PHYSICAL OBJECTS, RELEVANT MONUMENTS AND PHYSICAL CONDITIONS THAT WILL ENABLE RECOVERY OF THE CORNER) E 1/4 CORNER _____

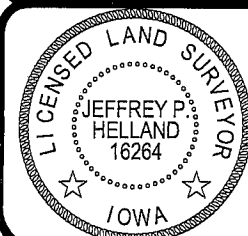


(BEARINGS ARE ASSUMED)



HELLAND ENGINEERING & SURVEYING, LTD.
1107 Technology Parkway
Cedar Falls, Iowa 50613-6951
(319)-266-0161

SHINER = 8D NAIL & 1 5/16"Ø METAL SHINER
BRASS TAG = 13/16"Ø BRASS TAG
OPC = PLASTIC CAP (O=ORANGE, R=RED, Y=YELLOW)
(00') RECORDED AS FILE NAME: 07-226C4.DWG



I hereby certify that this land surveying document was prepared and the related survey work was performed by me or under my direct personal supervision and that I am a duly licensed Land Surveyor under the laws of the State of Iowa.

Surveyor under the laws of the State of Iowa.
Jeffrey P. Helland 9/14/07
 Jeffrey P. Helland
 License Number 16264
 My license renewal date is December 31, 2007.
 All pages or sheets are covered by this seal except:

LIST CORNERS TO BE INDEXED

CORNER	SECTION	TOWNSHIP	RANGE
NE CORNER SE 1/4 SE 1/4	22	87N	12W
NE CORNER SW 1/4 SE 1/4	22	87N	12W

Rec