

File 2010-00021463

Jeffrey P. Helland, 1107 Technology Parkway, Cedar Falls, Iowa 50613-6951, (319)-266-0161

LAND SURVEY MONUMENTS SITUATED IN SECTION NO. 22, TOWNSHIP NO. 87 NORTH, RANGE
NO. 12 WEST OF THE FIFTH PRINCIPAL MERIDIAN, BLACK HAWK COUNTY, IOWA.

PREVIOUSLY RECORDED IN N/A

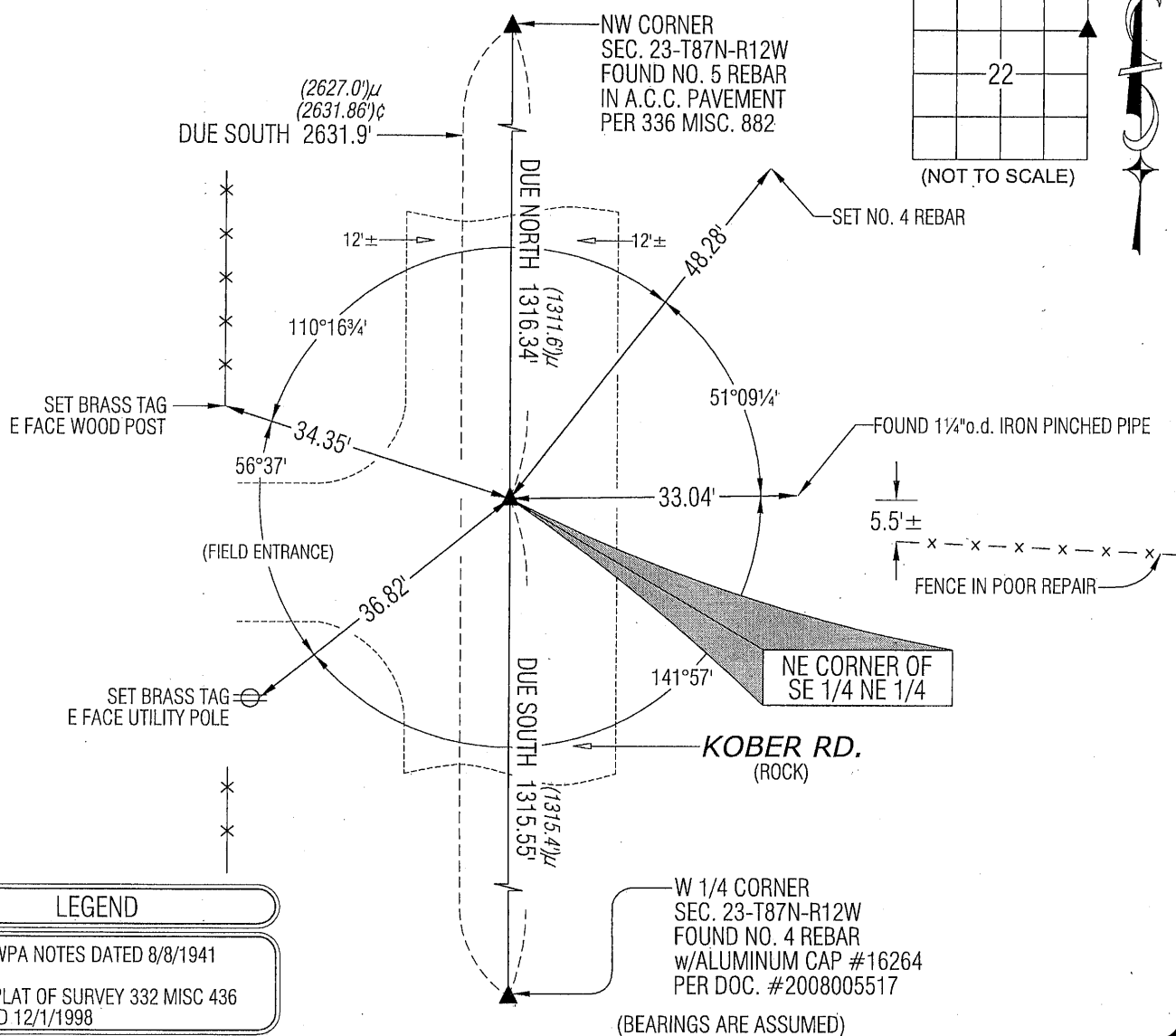
(SHOW REASON FOR PREPARING THIS CERTIFICATE, THE EVIDENCE AND DETAILED PROCEDURES USED IN ESTABLISHING THE CORNER POSITIONS AND MONUMENTATION FOUND OR PLACED.)

MONUMENT DESCRIPTION AND REMARKS:

NO USPLSCC ON FILE. SURVEY COMPLETED IN THE NW 1/4 NW 1/4 OF SEC. 23-T87N-R12W.

→ **NE CORNER SE 1/4 NE 1/4:** NO BLACK HAWK COUNTY ENGINEER REFERENCE TIES AVAILABLE. SET NO. 4 REBAR w/ALUMINUM CAP #16264 (0.2'± DEEP) IN A PATCH OF A.C.C. PAVEMENT @ THE INTERSECTION OF A STRAIGHT LINE BETWEEN THE NW CORNER AND THE W 1/4 CORNER AND AT THE WESTERLY EXTENSION OF MONUMENTS FOUND ON THE SOUTH LINE OF THE NW 1/4 NW 1/4.

(SHOW A MINIMUM OF THREE REFERENCE TIES TO DURABLE PHYSICAL OBJECTS, RELEVANT MONUMENTS AND PHYSICAL CONDITIONS THAT WILL ENABLE RECOVERY OF THE CORNER.)



LEGEND

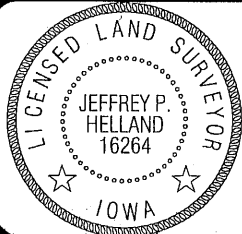
(0.0')μ PER WPA NOTES DATED 8/8/1941

(0.0') PER PLAT OF SURVEY 332 MISC 436
DATED 12/1/1998

SHINER = 8D NAIL & 1 5/16"Ø METAL SHINER
BRASS TAG = 13/16"Ø BRASS TAG
OPC = PLASTIC CAP (O=ORANGE, R=RED, Y=YELLOW)
(00') RECORDED AS FILE NAME: 10-128C1.DWG



HELLAND ENGINEERING & SURVEYING, LTD.
1107 Technology Parkway
Cedar Falls, Iowa 50613-6951
(319)-266-0161



I hereby certify that this land surveying document was prepared and the related survey work was performed by me or under my direct personal supervision and that I am a duly licensed Land Surveyor under the laws of the State of Iowa.

Surveyor under the laws of the State of Iowa.
Jeffrey P. Holland 5/10/10
 Jeffrey P. Holland
 License Number 16264
 My license renewal date is December 31, 2011.
 All pages or sheets are covered by this seal except:

LIST CORNERS TO BE INDEXED

CORNER	SECTION	TOWNSHIP	RANGE
NE COR. SE ¼ NE ¼	22	87N	12W
SE COR. NE ¼ NE ¼	22	87N	12W
SW COR. NW ¼ NW ¼	23	87N	12W
NW COR. SW ¼ NW ¼	23	87N	12W

(9.00)

Rec