

Jeffrey P. Helland, 1107 Technology Parkway, Cedar Falls, Iowa 50613-6951, (319)-266-0161

UNITED STATES PUBLIC LAND SURVEY CORNER CERTIFICATE
OFLAND SURVEY MONUMENTS SITUATED IN SECTION NO. 22, TOWNSHIP NO. 87 NORTH, RANGE
NO. 12 WEST OF THE FIFTH PRINCIPAL MERIDIAN, BLACK HAWK COUNTY, IOWA.PREVIOUSLY RECORDED IN N/A(SHOW REASON FOR PREPARING THIS CERTIFICATE, THE EVIDENCE AND DETAILED PROCEDURES USED IN ESTABLISHING THE
CORNER POSITIONS AND MONUMENTATION FOUND OR PLACED.)

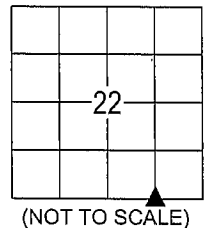
MONUMENT DESCRIPTION AND REMARKS:

NO USPLSCC ON FILE. SURVEY COMPLETED IN THE SE 1/4 OF THE SE 1/4 OF SEC. 22-T87N-R12W.

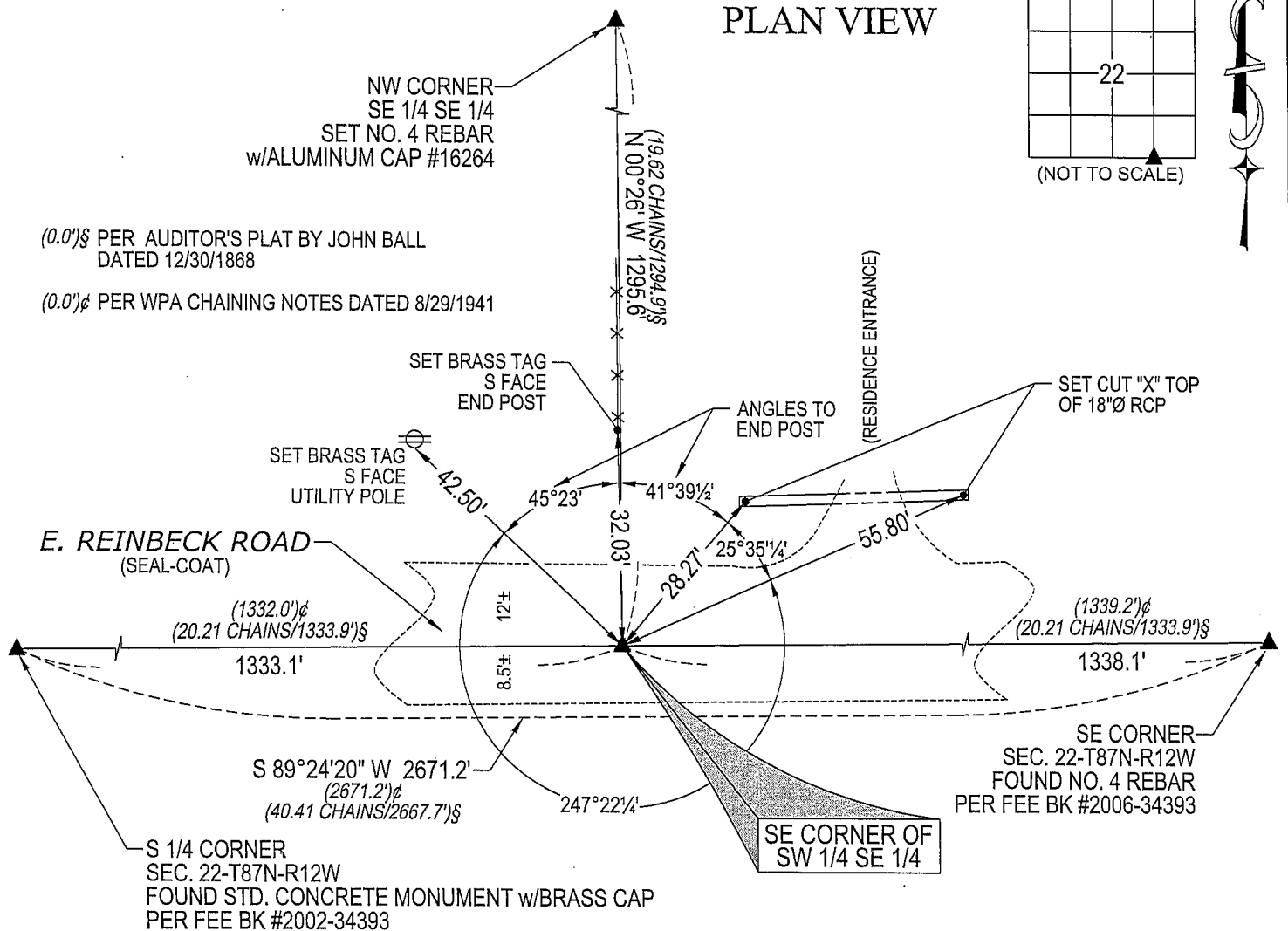
SE CORNER SW 1/4 SE 1/4: AUDITOR'S PLAT BY JOHN BALL DATED 12/30/1868 CALLS FOR [STONE]. A STONE
WAS ALSO CALLED FOR AT THE E 1/4 CORNER, SE CORNER AND S 1/4 CORNER OF SEC. 22 PER SAID
AUDITOR'S PLAT. PER WPA NOTES FOR THE E 1/4 CORNER DATED 11/27/1939, FOR THE SE CORNER DATED
11/15/1939 AND THE S 1/4 CORNER DATED 11/15/1939 A STONE WAS NOT FOUND AT THESE CORNERS.
SUSPECT STONES WERE NOT SET OR THEY WERE OBLITERATED BY ROAD CONSTRUCTION. NO BLACK
HAWK COUNTY ENGINEER REFERENCE TIES AVAILABLE. SET NO. 4 REBAR w/ALUMINUM CAP #16264 ON A
LINE BETWEEN THE S 1/4 CORNER AND SE CORNER AND IN LINE w/FENCE RUNNING NORTH. TOP OF CAP IS
JUST BELOW SEAL-COATED ROAD SURFACE.

(SHOW A MINIMUM OF THREE REFERENCE TIES TO DURABLE PHYSICAL OBJECTS, RELEVANT MONUMENTS AND PHYSICAL
CONDITIONS THAT WILL ENABLE RECOVERY OF THE CORNER.)

PLAN VIEW

NW CORNER
SE 1/4 SE 1/4
SET NO. 4 REBAR
w/ALUMINUM CAP #16264(0.0')§ PER AUDITOR'S PLAT BY JOHN BALL
DATED 12/30/1868

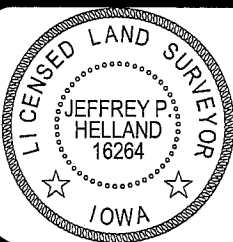
(0.0')§ PER WPA CHAINING NOTES DATED 8/29/1941



(BEARINGS ARE ASSUMED)

HELLAND ENGINEERING & SURVEYING, LTD.
1107 Technology Parkway
Cedar Falls, Iowa 50613-6951
(319)-266-0161

SHINER = 8D NAIL & 1 5/16\"/>

I hereby certify that this land surveying document was prepared
and the related survey work was performed by me or under my
direct personal supervision and that I am a duly licensed Land
Surveyor under the laws of the State of Iowa.Jeffrey P. Helland 9/4/07
Jeffrey P. Helland
License Number 16264
My license renewal date is December 31, 2007.
All pages or sheets are covered by this seal except:

LIST CORNERS TO BE INDEXED

CORNER	SECTION	TOWNSHIP	RANGE
SE CORNER	22	87N	12W
SW 1/4 SE 1/4			