

Jeffrey P. Helland, 1107 Technology Parkway, Cedar Falls, Iowa 50613-6951, (319)-266-0161

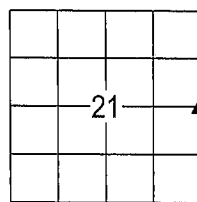
UNITED STATES PUBLIC LAND SURVEY CORNER CERTIFICATE  
OFLAND SURVEY MONUMENTS SITUATED IN SECTION NO. 21, TOWNSHIP NO. 87 NORTH, RANGE  
NO. 12 WEST OF THE FIFTH PRINCIPAL MERIDIAN, BLACK HAWK COUNTY, IOWA.  
PREVIOUSLY RECORDED IN N/A(SHOW REASON FOR PREPARING THIS CERTIFICATE, THE EVIDENCE AND DETAILED PROCEDURES USED IN ESTABLISHING THE  
CORNER POSITIONS AND MONUMENTATION FOUND OR PLACED.)

## MONUMENT DESCRIPTION AND REMARKS:

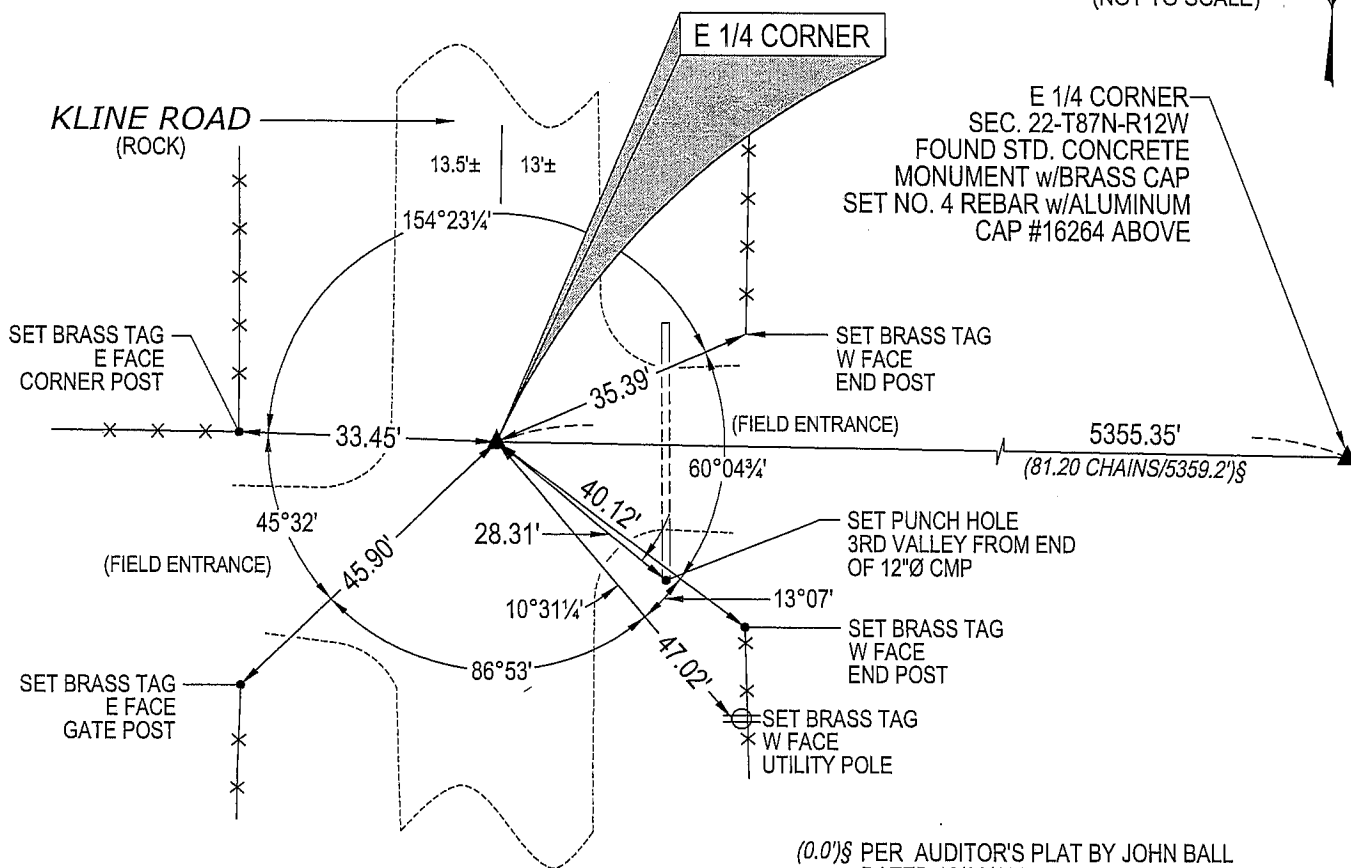
NO USPLSCC ON FILE. SURVEY COMPLETED IN THE SE 1/4 OF THE SE 1/4 OF SEC. 22-T87N-R12W.

→ **E 1/4 CORNER:** BLACK HAWK COUNTY ENGINEER REFERENCE TIES (NO DATE) CALLS FOR [SCM]. FOUND  
STD. CONCRETE MONUMENT w/BRASS CAP 0.6' DEEP, SET NO. 4 REBAR ON NORTH SIDE OF C.M. FLUSH  
w/TOP OF C.M. FOR MAGNETIC DETECTION.

## PLAN VIEW

(SHOW A MINIMUM OF THREE REFERENCE TIES TO DURABLE PHYSICAL OBJECTS, RELEVANT MONUMENTS AND PHYSICAL  
CONDITIONS THAT WILL ENABLE RECOVERY OF THE CORNER.)(0.0')§ PER AUDITOR'S PLAT BY JOHN BALL  
DATED 12/30/1868

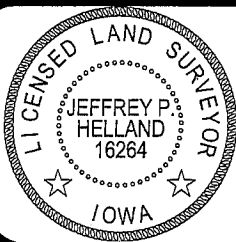
(NOT TO SCALE)

(0.0')§ PER AUDITOR'S PLAT BY JOHN BALL  
DATED 12/30/1868

(BEARINGS ARE ASSUMED)

HELLAND ENGINEERING & SURVEYING, LTD.  
1107 Technology Parkway  
Cedar Falls, Iowa 50613-6951  
(319)-266-0161

SHINER = 8D NAIL &amp; 1 5/16\"/&gt;

I hereby certify that this land surveying document was prepared  
and the related survey work was performed by me or under my  
direct personal supervision and that I am a duly licensed Land  
Surveyor under the laws of the State of Iowa.Jeffrey P. Helland 9/4/07  
Jeffrey P. Helland  
License Number 16264  
My license renewal date is December 31, 2007.  
All pages or sheets are covered by this seal except:LIST CORNERS TO BE INDEXED  
CORNER SECTION TOWNSHIP RANGE  
E 1/4 CORNER 21 87N 12W