



Doc ID: 004531680001 Type: GEN
Kind: CORNER
Recorded: 07/27/2011 at 01:08:33 PM
Fee Amt: \$7.00 Page 1 of 1
Black Hawk County Iowa
JUDITH A MCCARTHY RECORDER
File **2012-00001650**

ENV
WAYNE CLAASSEN ENGINEERING AND SURVEYING, INC.
P.O. BOX 898 WATERLOO, IOWA 50704-0898

PHONE: (VOICE) 319-235-6294
(FAX) 319-235-0028

UNITED STATES PUBLIC LAND SURVEY CORNER CERTIFICATE

Land Survey Monuments situated in Section 20, Township 87 North, Range 12 West, of the Fifth Principal Meridian, Black Hawk County, Iowa.

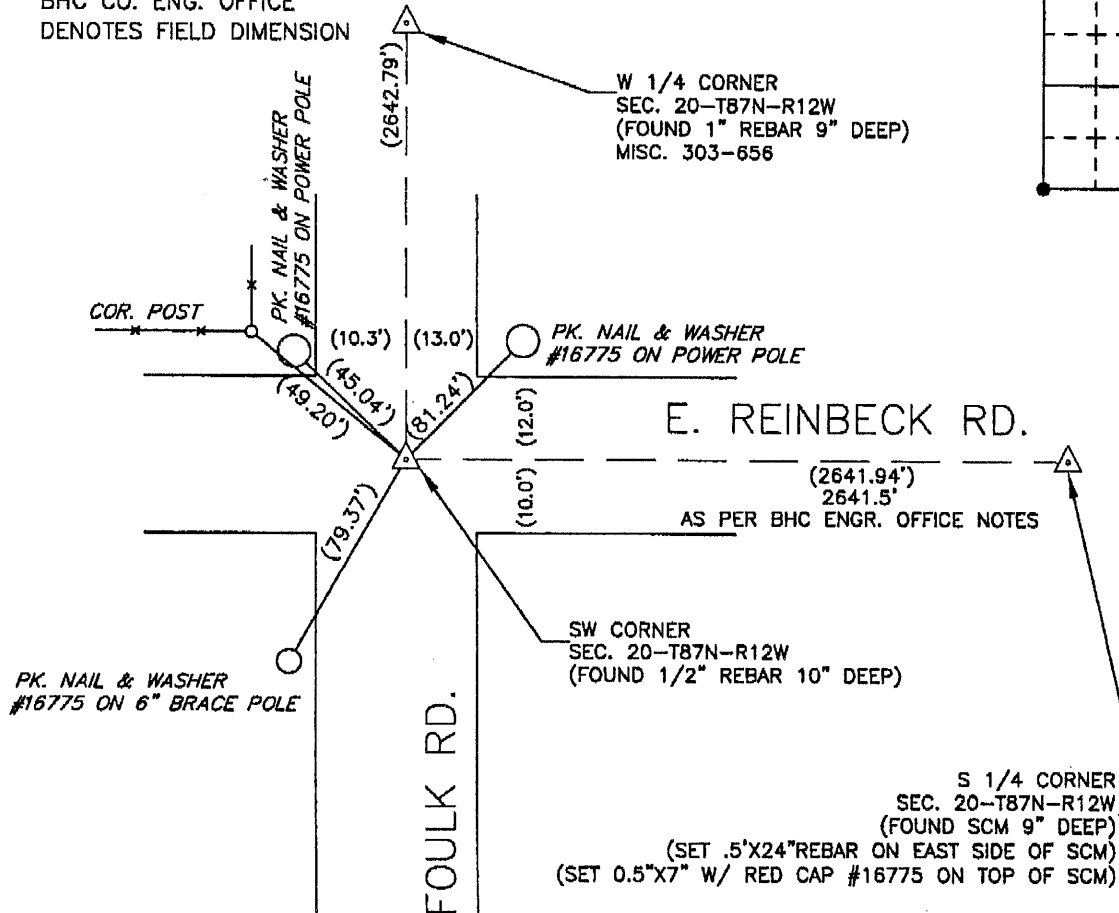
Previously recorded in _____ in County Recorder's Office.

Monument Description and Remarks

(book, page, document number, etc.)
The following is from field notes found in the Black Hawk County Engineer's Office, dated 12-06-1939: "At location indicated by random line dug hole 5ft. sq. 18" deep. Found nigger head 14"x13"x7", iron bar 1/2"x24", also remnants of an old oak hub and lime stone 9"x8 1/2"x2 1/2", niggerhead stone 8"x6"x11". Lowered all evidence in place and set C.M. Set top of C.M. 12" deep." Field notes from bhc eng. office dated 5-83 notes "set pin over conc. mon.". Plat of survey, dated 11-20-1991, Misc. Bk. 298-962, shows found #5 bar. Plat of survey, dated 11-05-1992, Misc. Bk. 303-654 shows No. 8 bar. Found 1/2" rebar 10" deep. Found 1/2" rebar 10" deep. This certificate was filed because there is no certificate on file.

00.00 DENOTES RECORD DIMENSION
BHC CO. ENG. OFFICE
(00.00) DENOTES FIELD DIMENSION

PLAN - VIEW



BK 679-25

I hereby certify that this land surveying document was prepared and the related survey work was performed by me or under my direct personal supervision and that I am a duly Licensed Land Surveyor under the laws of the State of Iowa.

Signature: _____

David L. Scheil, L.S.

Date: JULY 26, 2011 Lic. No. 16775

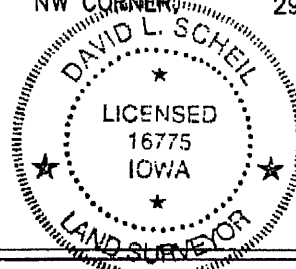
Pages or Sheets Covered by this Seal: THIS SHEET ONLY.

My license renewal date is December 31, 2012

SEAL

List Corners to be Indexed

Corners	Section	Twp	Range
SW CORNER,	20	87 N	12 W
SE CORNER,	19	87 N	12 W
NE CORNER,	30	87 N	12 W
NW CORNER,	29	87 N	12 W



21.00 VPS

(700)