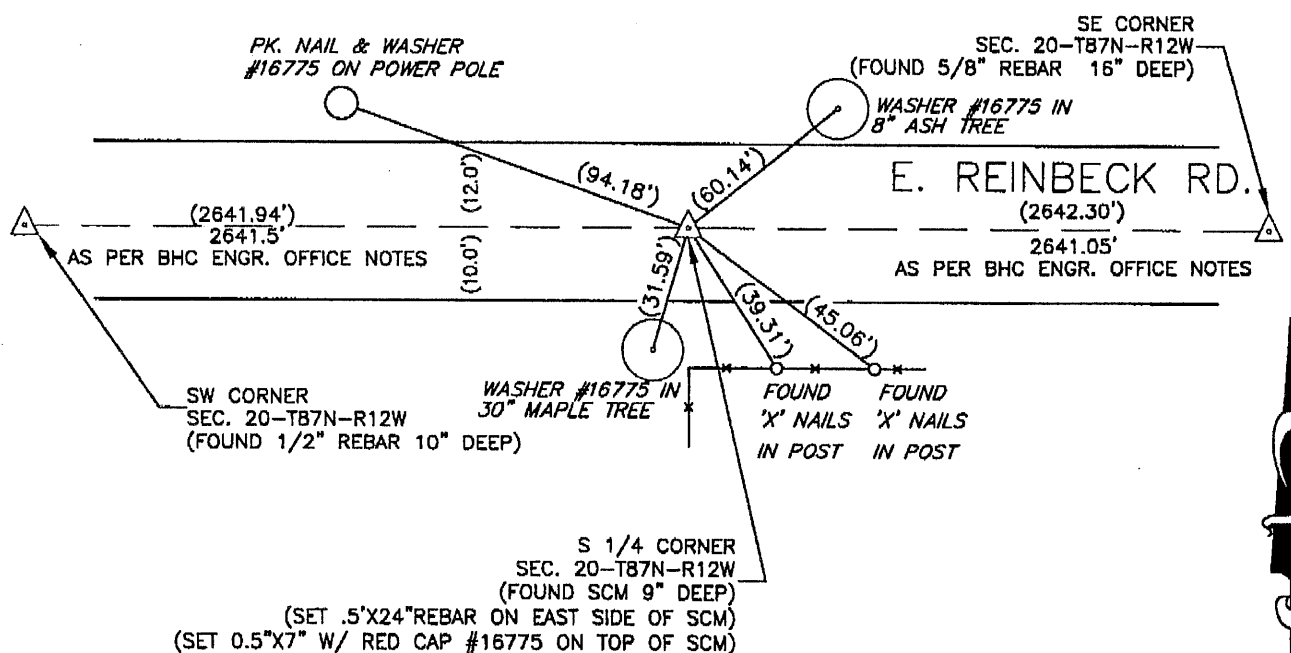
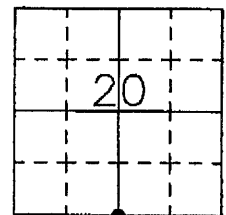


PHONE: (VOICE) 319-235-6294
(FAX) 319-235-0028

Land Survey Monuments situated in Section 20, Township 87 North, Range 12 West, of the Fifth Principal Meridian, Black Hawk County, Iowa. Previously recorded in _____ in County Recorder's Office.
(book, page, document number, etc.)

The following is from field notes found in the Black Hawk County Engineer's Office, dated 12-06-1939: "At location indicated by random line dug hole 5ft. sq. 18" deep. Found limestone 15"x9"x5" and old oak hub 19"x2"x2". Lowered all evidence and set C.M. on top. Set top of C.M. 12" deep." Field notes from bhc eng. office dated 5-83 notes "set pin over conc. mon.". Plat of survey, dated 11-20-1991, Misc. Bk. 298-962, shows found #5 bar. Found SCM 9" DEEP. Set .5'X24" rebar on east side of SCM. Set 0.5'X7" W/ Red Cap #16775 on top of SCM. This certificate was filed because there is no certificate on file.

PLAN - VIEW

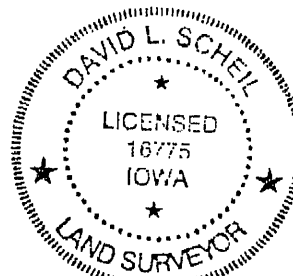


I hereby certify that this land surveying document was prepared and the related survey work was performed by me or under my direct personal supervision and that I am a duly Licensed Land Surveyor under the laws of the State of Iowa.

My license renewal date is December 31, 2012

List Corners to be Indexed

Corners	Section	Tw	Range
N 1/4 CORNER,	29	87 N	12 W
S 1/4 CORNER,	20	87 N	12 W



(700)