

Paul H. Helland, 1107 Technology Parkway, Cedar Falls, Iowa 50613-6951, (319)-266-0161

UNITED STATES PUBLIC LAND SURVEY CORNER CERTIFICATE OF

LAND SURVEY MONUMENTS SITUATED IN SECTION NO. 20, TOWNSHIP NO. 87 NORTH, RANGE
NO. 12 WEST OF THE FIFTH PRINCIPAL MERIDIAN, BLACK HAWK COUNTY, IOWA.

PREVIOUSLY RECORDED IN _____

(SHOW REASON FOR PREPARING THIS CERTIFICATE, THE EVIDENCE AND DETAILED PROCEDURES USED IN ESTABLISHING THE
CORNER POSITIONS AND MONUMENTATION FOUND OR PLACED.)

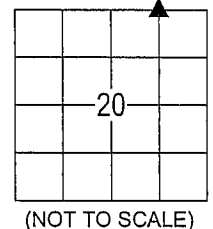
MONUMENT DESCRIPTION AND REMARKS:

No USPLSCC on file. Survey completed in the NW 1/4 NE 1/4 of Sec. 20-T87N-R12W.

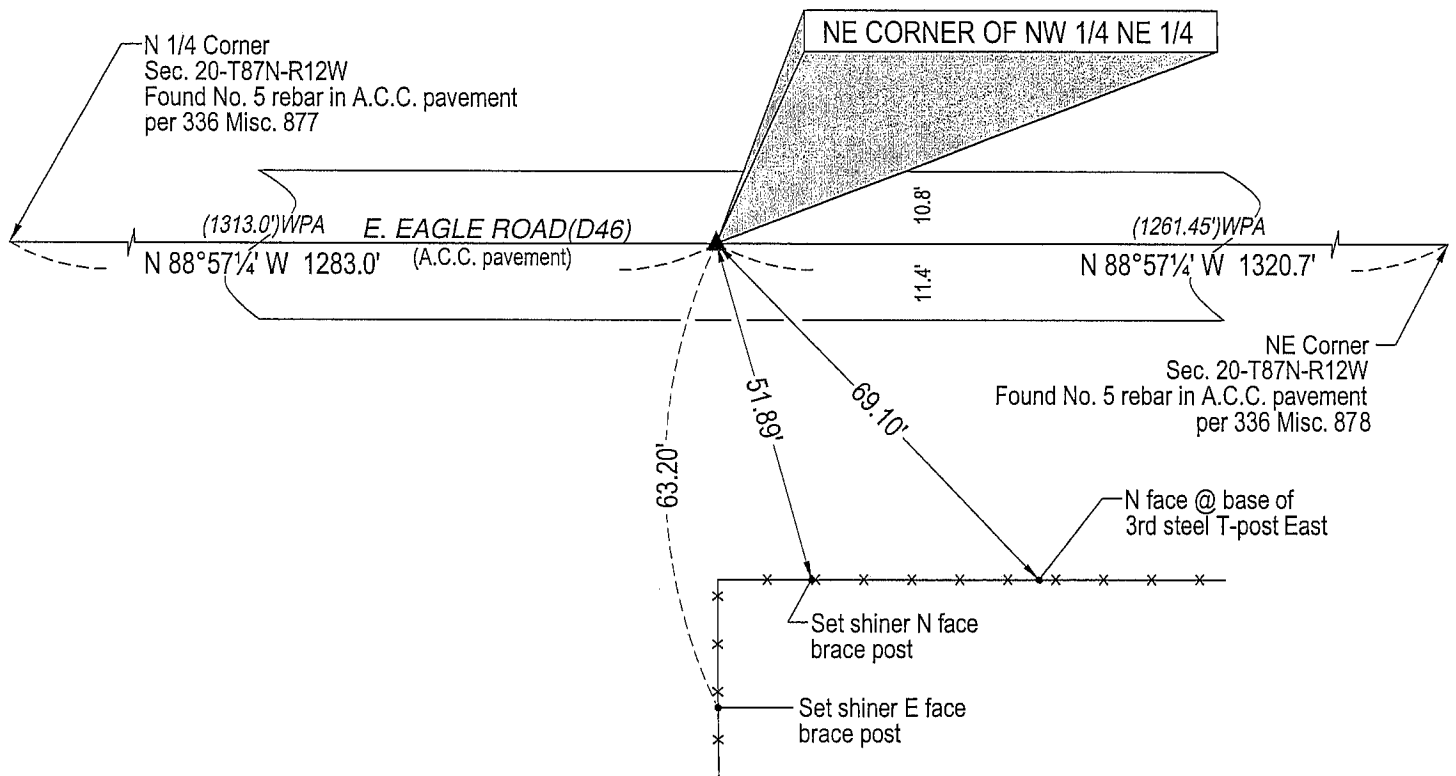
→ NE CORNER OF NW 1/4 NE 1/4: No Black Hawk County Engineer reference ties exist. Set "mag" nail in A.C.C.
pavement on line between the N 1/4 Corner and the NE Corner and in line with fence running South.

PLAN VIEW

(SHOW A MINIMUM OF THREE REFERENCE TIES TO DURABLE PHYSICAL OBJECTS, RELEVANT MONUMENTS AND PHYSICAL
CONDITIONS THAT WILL ENABLE RECOVERY OF THE CORNER.)



(NOT TO SCALE)



HELLAND ENGINEERING & SURVEYING, LTD.
1107 Technology Parkway
Cedar Falls, Iowa 50613-6951
(319)-266-0161

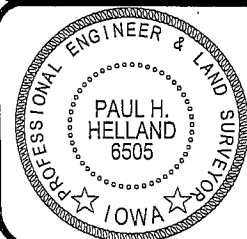
shiner = 8d nail & 1 15/16" Ø metal shiner
(Bearings based upon Geodetic North)

(00') Recorded As

File Name: 05-218c1.dwg

LIST CORNERS TO BE INDEXED

CORNER	SECTION	TOWNSHIP	RANGE
NE CORNER NW 1/4 NE 1/4	20	87N	12W



I hereby certify that this land surveying document was prepared
and the related survey work was performed by me or under my
direct personal supervision and that I am a duly licensed Land
Surveyor under the laws of the State of Iowa.

Paul H. Helland 6/29/05
Paul H. Helland
License Number 6505
My license renewal date is December 31, 2005.
All pages or sheets are covered by this seal except:

Rec