

Paul H. Helland, 1107 Technology Parkway, Cedar Falls, Iowa 50613-6951, (319)-266-0161

UNITED STATES PUBLIC LAND SURVEY CORNER CERTIFICATE OF

LAND SURVEY MONUMENTS SITUATED IN SECTION NO. 20, TOWNSHIP NO. 87 NORTH, RANGE
NO. 12 WEST OF THE FIFTH PRINCIPAL MERIDIAN, BLACK HAWK COUNTY, IOWA.
PREVIOUSLY RECORDED IN N/A.

(SHOW REASON FOR PREPARING THIS CERTIFICATE, THE EVIDENCE AND DETAILED PROCEDURES USED IN ESTABLISHING THE
CORNER POSITIONS AND MONUMENTATION FOUND OR PLACED.)

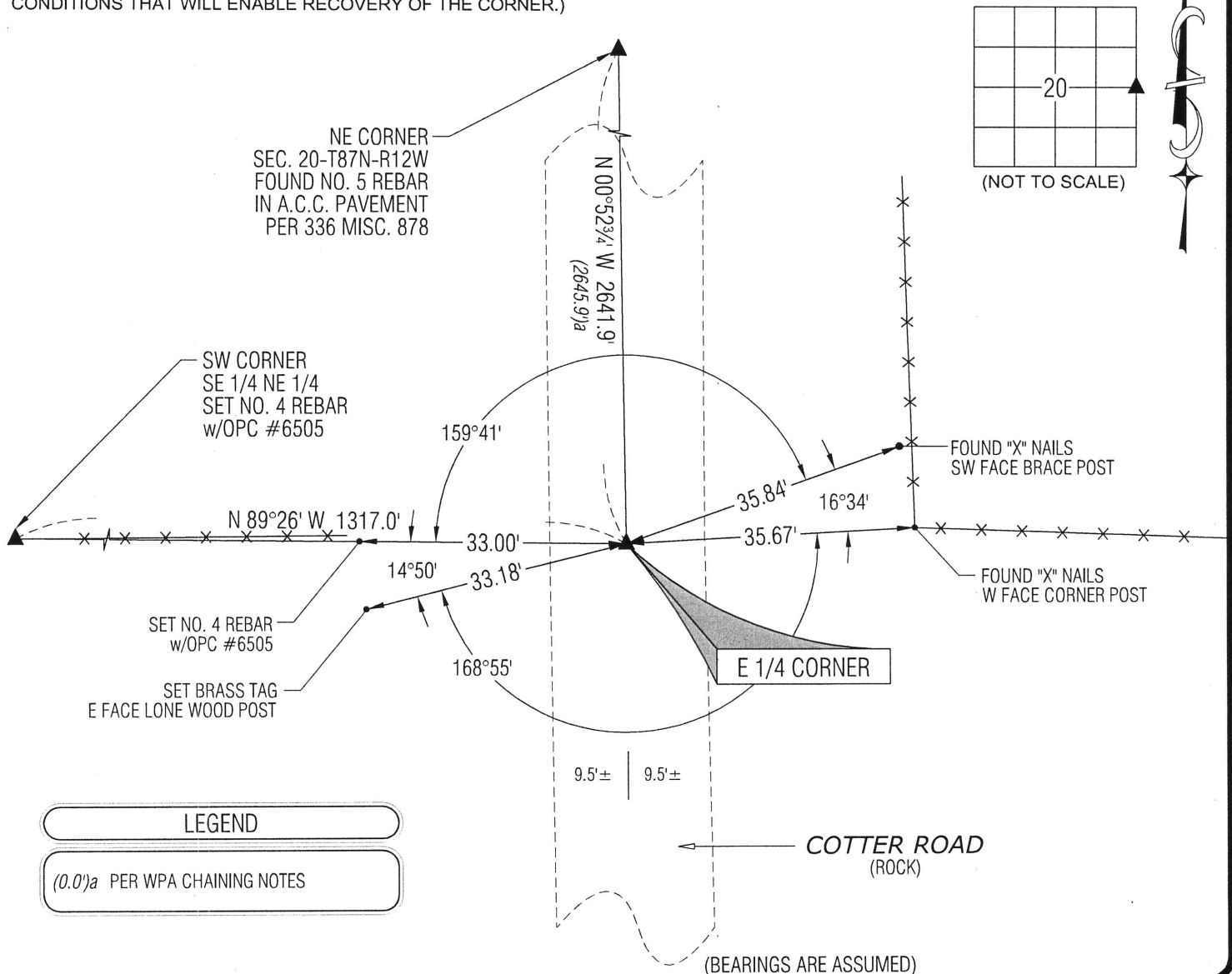
MONUMENT DESCRIPTION AND REMARKS:

NO USPLSCC ON FILE. SURVEY COMPLETED IN THE E 1/2 OF THE NE 1/4 OF SEC. 20-T87N-R12W.

→ **E 1/4 CORNER:** WPA CHAINING NOTES (NO DATE) CALLS FOR [FOUND NIGGERHEAD 14" x 6" x 5"]. BLACK HAWK COUNTY
CORNER STONE TIES DATED 12/06/1939 CALLS FOR [FOUND NIGGERHEAD 14" x 6" x 5" LOWERED EVIDENCE IN PLACE AND
SET CM ON TOP WITH CAP MARKED 20 + 21 SET TOP OF CM 12" DEEP]. BLACK HAWK COUNTY ENGINEER TIES (NO DATE)
CALLS FOR [CONCRETE MONUMENT]. FOUND STANDARD CONCRETE MONUMENT WITH BRASS CAP 3.1 FEET DEEP, SET NO.
4 REBAR w/OPC #6505 ABOVE.

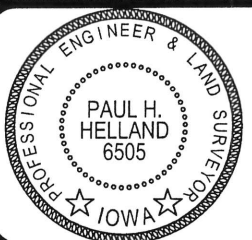
PLAN VIEW

(SHOW A MINIMUM OF THREE REFERENCE TIES TO DURABLE PHYSICAL OBJECTS, RELEVANT MONUMENTS AND PHYSICAL
CONDITIONS THAT WILL ENABLE RECOVERY OF THE CORNER.)



HELLAND ENGINEERING & SURVEYING, LTD.
1107 Technology Parkway
Cedar Falls, Iowa 50613-6951
(319)-266-0161

SHINER = 8d. NAIL & 1 5/16"Ø METAL SHINER
BRASS TAG = 8d. NAIL & 13/16"Ø BRASS TAG
OPC = PLASTIC CAP (O=ORANGE, R=RED, Y=YELLOW)
(00') RECORDED AS FILE NAME: 14-107-22.DWG



I hereby certify that this land surveying document was prepared
and the related survey work was performed by me or under my
direct personal supervision and that I am a duly licensed
Professional Land Surveyor under the laws of the State of Iowa.

Paul H. Helland
License Number 6505
My license renewal date is December 31, 2015.
All pages or sheets are covered by this seal except:

LIST CORNERS TO BE INDEXED

CORNER	SECTION	TOWNSHIP	RANGE
E 1/4 CORNER	20	87N	12W
W 1/4 CORNER	21	87N	12W