

2025-05086

RECORDED: 04/17/2025 01:32:50 PM

RECORDING FEE: \$7.00

REVENUE TAX: \$

COMBINED FEE: \$7.00

SANDIE L. SMITH, RECORDER
BLACK HAWK COUNTY, IOWA

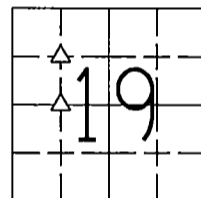
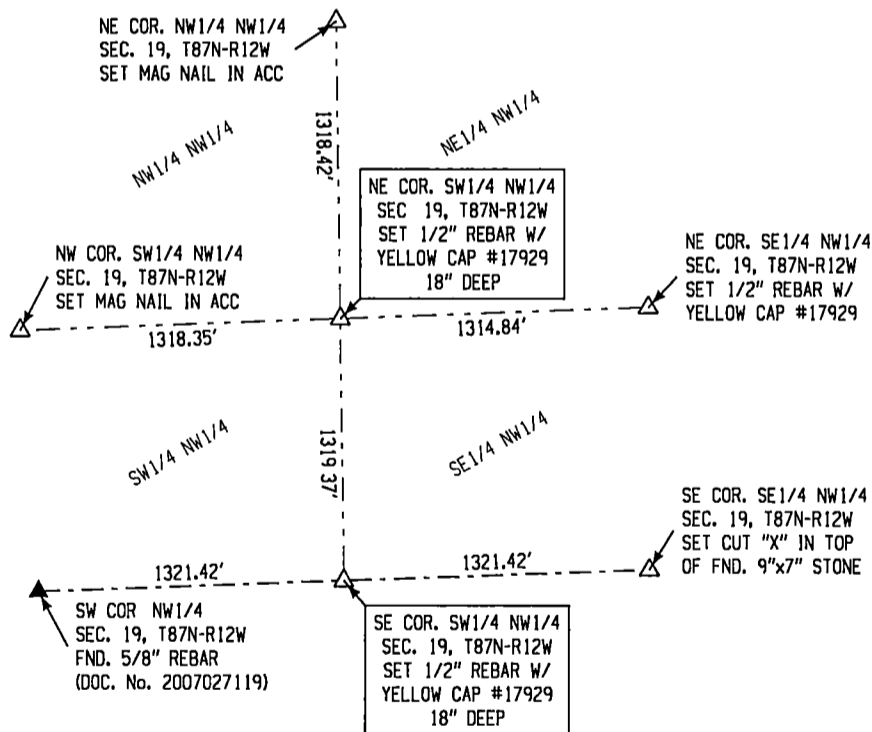
* PREPARED BY / RETURN TO JEFFREY R HUTTON, PLS * 407 SYCAMORE ST LA PORTE CITY, IOWA 50651 * (319)342-4774

UNITED STATES PUBLIC LAND SURVEY CORNER CERTIFICATE OF

Land Survey Monuments situated in Section 19, Township 87N, Range 12W of the Fifth Principal Meridian, BLACK HAWK County, Iowa, previously recorded in N/A in County Recorder's Office. (Book, Page Document Number, etc)

Monument Description and Remarks

NE COR SW1/4 NW1/4 FOUND NO EVIDENCE OF MONUMENTATION IN THE OFFICE OF THE BLACK HAWK COUNTY RECORDER SEARCHED THE AREA AROUND THE INTERSECTION OF A LINE BETWEEN MONUMENTS SET AT THE NW COR. SW1/4 NW1/4 AND NE COR SE1/4 NW1/4 AND A LINE BETWEEN MONUMENTS SET AT THE NE COR. NW1/4 NW1/4 & SE COR SW1/4 NW1/4. FOUND NOTHING. SET MONUMENT AS NOTED AT INTERSECTION OF SAID LINES ACCEPTED AS CORNER. TIED OUT TO ADJACENT SECTION CORS. SE COR SW1/4 NW1/4 FOUND NO EVIDENCE OF MONUMENTATION IN THE OFFICE OF THE BLACK HAWK COUNTY RECORDER SEARCHED THE AREA MIDWAY BETWEEN MONUMENTS FOUND AT THE SW COR NW1/4 & THE SE COR SE1/4 NW1/4 FOUND NOTHING SET MONUMENT AS NOTED AT THE MIDPOINT OF A LINE BETWEEN SAID CORS. ACCEPTED AS CORNER AND TIED TO ADJACENT SECTION CORS



NE COR. SW1/4 NW1/4
SEC. 19, T87N-R12W
&
SE COR. SW1/4 NW1/4
SEC. 19, T87N-R12W

LIST CORNERS TO BE INDEXED			
CORNER	SECTION	TOWNSHIP	RANGE
NE COR SW1/4 NW1/4	19	87N	12W
SE COR SW1/4 NW1/4	19	87N	12W



I hereby certify that this land surveying document was prepared and the related survey work was performed by me or under my direct personal supervision and that I am a duly licensed Land Surveyor under the laws of the State of Iowa

Jeffrey R Hutton 17 Apr 25
JEFFREY R HUTTON LICENSE NO 17929 DATE

My license is subject to renewal on December 31, 2025
This certification applies only to the page upon which it appears

REASON FOR PREPARING CERTIFICATE

- A) THERE IS NO CERTIFICATE FOR THE CORNER ON FILE WITH THE RECORDER OF THE COUNTY IN WHICH THE CORNER IS LOCATED
- B) CORNER POSITION DIFFERS FROM THAT SHOWN IN THE PUBLIC RECORDS OF THE COUNTY IN WHICH THE CORNER IS LOCATED
- C) THE CORNER MONUMENT HAS BEEN REPLACED OR MODIFIED
- D) THE REFERENCE TIES REFERRED TO IN AN EXISTING PUBLIC RECORD ARE INCORRECT

L I C E N S E D	SHEET NAME	U. S. LAND SURVEY CORNER CERT.			GPS Great Plains Survey, Inc	407 SYCAMORE ST LA PORTE CITY, IA 50651 (319)342-4774
	PROJECT NAME	RETRACEMENT SW1/4 NW1/4 SEC. 19				
DATE	DRAWN BY	CHECKED BY	APPROVED BY	SCALE	PROJECT No	
04/11/2025	MJWH	JRH	JRH	NTS	251012	